

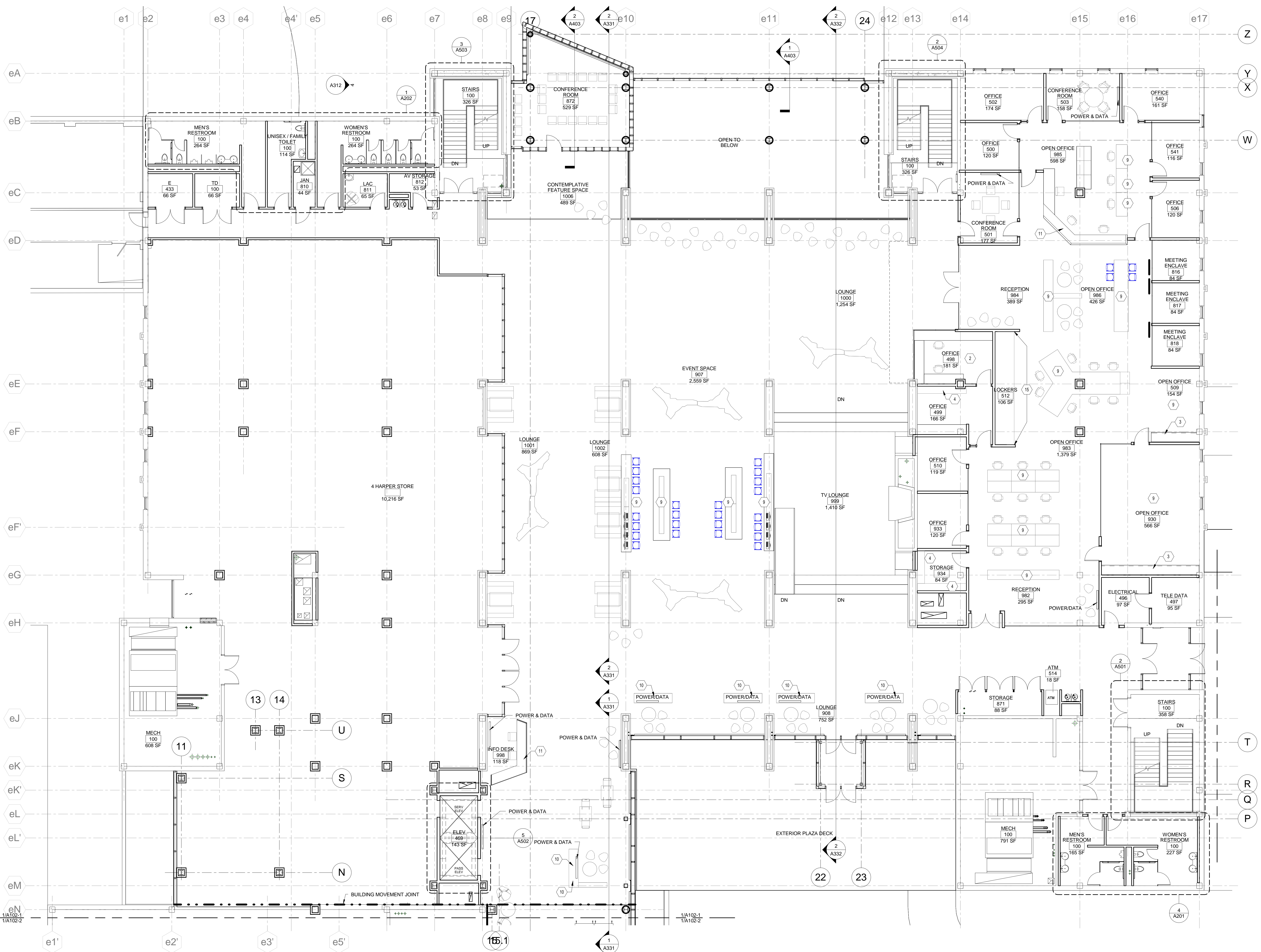
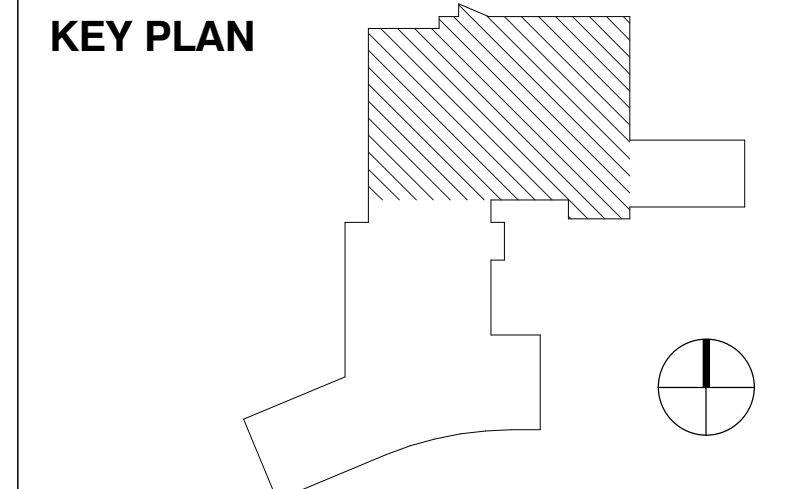
GENERAL SHEET NOTES

REFERENCE KEYNOTES

SHEET KEYNOTES

- 1 PLAM COUNTERTOP WITH BACKSPLASH.
- 2 PLAM COUNTERTOP W/ BASE CABINETS.
- 3 PLAM COUNTERTOP, BASE AND UPPER CABINETS.
- 4 ADJUSTABLE SHELVES (S) 12"D. ON HEAVY-DUTY METAL STANDARDS.
- 5 HANG ROD WITH FIXED PLAM SHELF ABOVE.
- 6 MILLWORK: SOLID SURFACE COUNTER
- 7 MILLWORK: PLASTIC LAMINATE COUNTERTOP WITH LOCKING BASE CABINETS.
- 8 MILLWORK: PLASTIC LAMINATE COUNTERTOP WITH LOCKING FILE CABINETS.
- 9 FIXED FURNITURE, N.I.C. PROVIDE HARDWIRED POWER & DATA.
- 10 MILLWORK: PARTIAL HEIGHT OPEN STORAGE, PLASTIC LAMINATE SURFACES, WITH INTEGRATED POWER AND TECHNOLOGY.
- 11 MILLWORK: CORIAN CTOP WITH PLASTIC LAMINATE BASE CABINETS.
- 12 BANQUETTE SEATING: FULLY UPHOLSTERED W/ PLAM ENCLOSURE PANELS.
- 13 MILLWORK: SERVING COUNTER WITH S.S. TRAY SLIDE, PLAM PANELS, AND SNEEZE GUARD.
- 14 METAL LOCKERS
- 15 DOUBLE TIER WOOD LOCKERS BY SALSBURY, 36"W X 24"D X 72"H.

SHEET LEGEND



1 LEVEL 02 FLOOR PLAN  
1/8" = 1'-0"

NOTE: CONTRACTOR SHALL VERIFY ALL DIMENSIONS AND CONDITIONS AT JOB SITE AND BE FULLY RESPONSIBLE FOR SAME.

DESIGN DEVELOPMENT - ISSUED FOR REVIEW



© Cannon Design 2014  
 All rights reserved. No part of this document may be reproduced, stored in a retrieval system, or transmitted in any form or by any means, electronic, mechanical, photocopying, recording, or by any information storage and retrieval system, without the prior written authorization by Cannon Design Corporation.  
 6/16/2014 1:02:51 PM

REVISIONS		
NO.	DATE	REMARKS

<b>DRAWN</b> Author	<b>PREPARED</b> Author
<b>TRACED</b> Checker	<b>APPROVED</b> Approver
<b>CHECKED</b> Checker	<b>APPROVED</b> Approver

**PRELIMINARY  
NOT FOR  
CONSTRUCTION**

(PROFESSIONAL  
SEAL AS  
REQUIRED)

**DESIGN ARCHITECT,  
STRUCTURAL ENGINEERING,  
AND MEP ENGINEERING**  
CANNON DESIGN  
225 N MICHIGAN AVENUE  
SUITE 1100  
CHICAGO, IL 60601

**CIVIL ENGINEERING**  
ERIKSSON ENGINEERING ASSOCIATES, LTD  
601 W RANDOLPH STREET, SUITE 500  
CHICAGO, IL 60661

**FOOD SERVICE**  
S20 CONSULTANTS, INC  
402 W JAMES WAY  
CARY, IL 60013

**LIGHTING DESIGN**  
ANNE KUSTNER LIGHTING DESIGN, LTD  
100 ISABELLA STREET  
EVANSTON, IL 60201



State of Illinois  
Pat Quinn, Governor  
Capital Development Board



**LEVEL 02 AREA 1 FLOOR PLAN**  
**CAMPUS LIFE / ONE STOP ADMISSIONS**  
**HARPER COLLEGE**  
**PALATINE, ILLINOIS**

**PROJECT NO.**  
810-032-024  
**DATE**  
17 JUNE 2014  
**SHEET NO.**  
**A102-1**