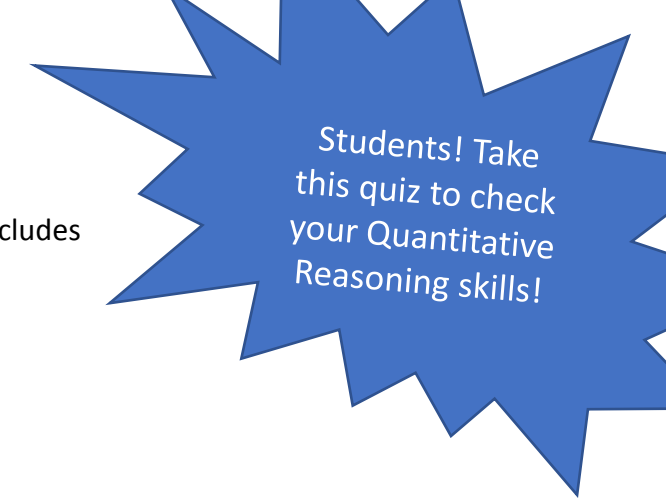


Harper College

General Education Assessment and Improvement: Quantitative Reasoning

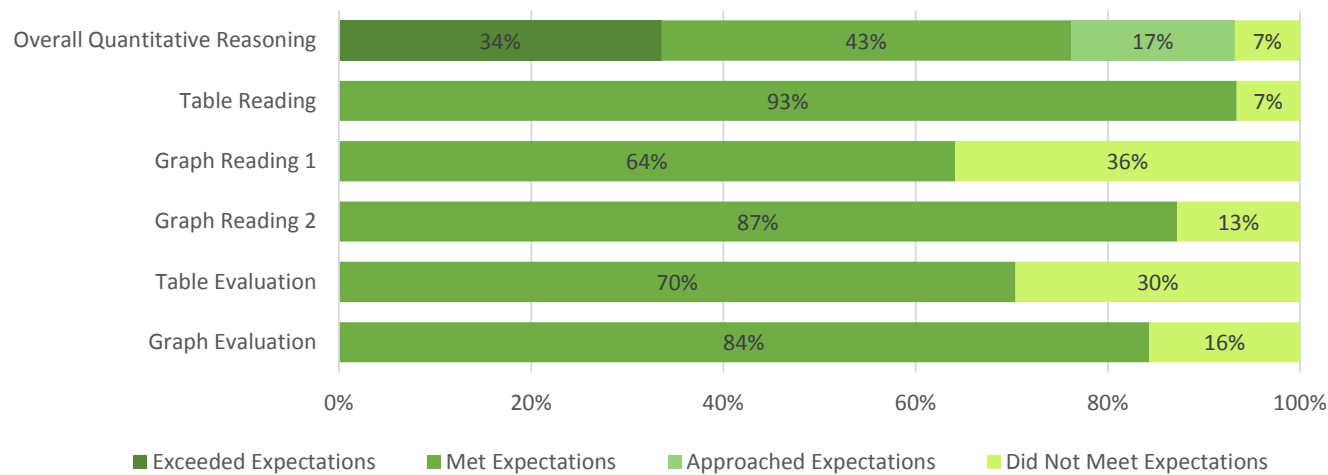


The most recent large-scale General Education Quantitative Reasoning assessment was conducted in 2015-16. The first column below includes results of that assessment for students who earned 45+ credit hours vs. all students who took the assessment. Additional demographic information was also reviewed. A follow-up assessment will be conducted in 2018-19.

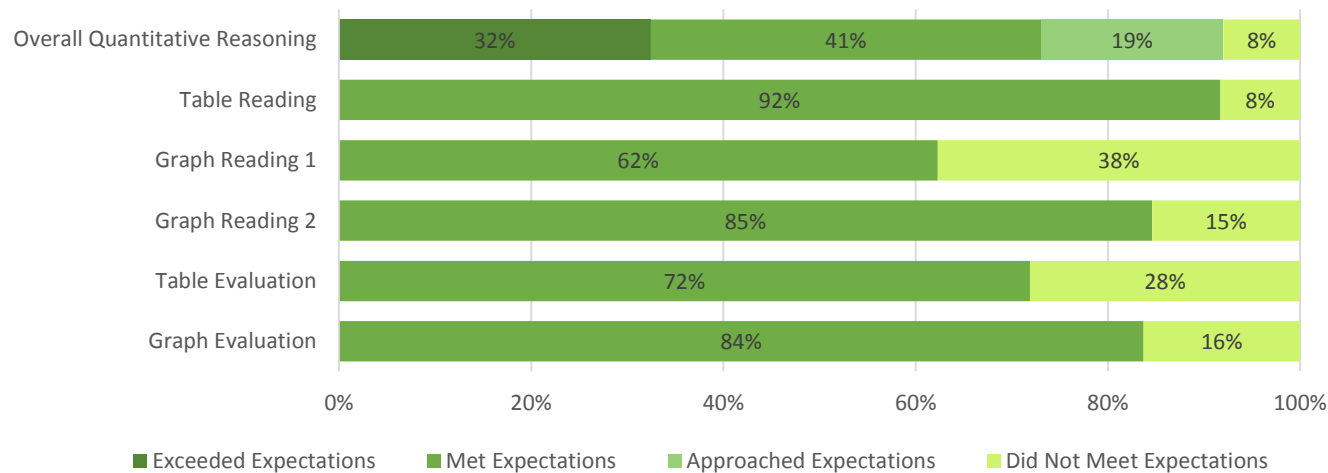
The second column includes related assessment information to provide additional information regarding students' achievement of this outcome. The Community College Survey of Student Engagement (CCSSE) is being administered again in spring 2018.

Based on these results, the Learning Assessment Committee and General Education–Quantitative Reasoning Work Group are working to improve Quantitative Reasoning across Harper College. [The Quantitative Reasoning Improvement Plan can be found here.](#)

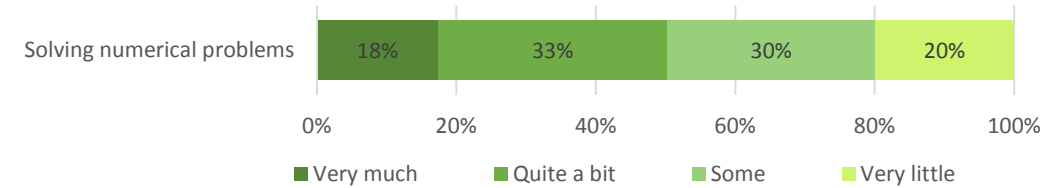
Direct Assessment Scores, 45+ Hours



Direct Assessment Scores, All Student Groups

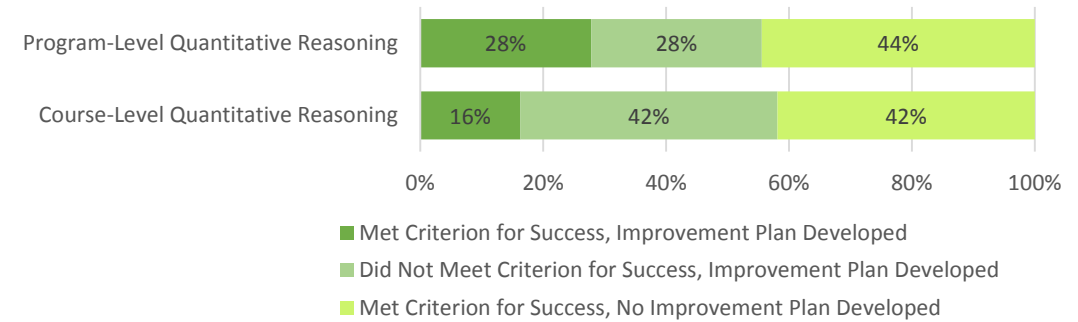


Indirect Assessment Scores



Source: Community College Survey of Student Engagement (CCSSE) 2015, Item 12: How much has your experience at this college contributed to your knowledge, skills, and personal development in the following areas? N = 876

Program and Course Assessment Ratings



Source: 2016-17 Harper College program and course assessment reports. Note: If a program or course does not meet the criterion for success defined by faculty, an improvement plan is required.

[Additional information about course and program assessment can be found here.](#)