

Supply Chain Management (SCM)

The Success of an Organization Depends upon Its Supply Chain

“In today’s competitive business environment, organizations must leverage effective and efficient **Supply Chains** to ensure sustainable growth and profitability. In order to accomplish this objective - people, process and technology must be aligned seamlessly to meet and exceed the expectations of the end-user” .

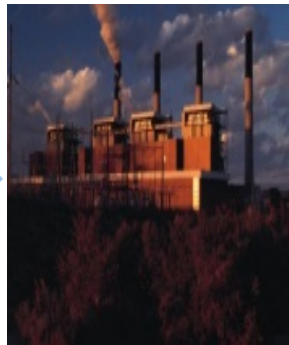
What is the Definition of Supply Chain Management (SCM)?

Supply Chain Management is defined as the design and management of value-added processes **across organizational boundaries** to deliver goods and services to the customer and consumer.

A Visual Example of One Type of Supply Chain



Tier 2 Suppliers



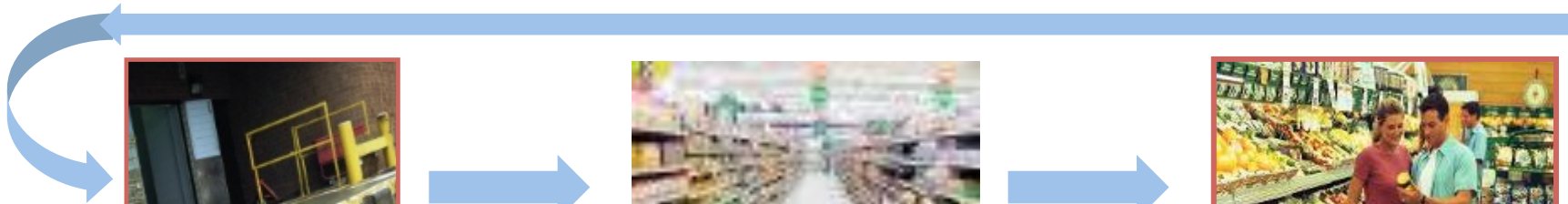
Tier 1 Suppliers



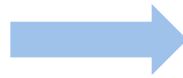
Raw Materials Warehouse/
Distribution



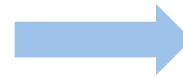
Consumer Products
Manufacturer



Finished Goods
Distribution



Customer



Consumer

Types of Jobs and Careers in Supply Chain Management

- Purchasing/Procurement and Supply Management
- Operations and Production Control
- Transportation and Logistics
- Warehouse Management
- Inventory Control
- Materials Management
- Demand Planning
- Customer Service and Fulfillment Operations
- Supply Chain Analytics and Coordination

Activities in Supply Management



- Procurement of raw materials
- Supplier negotiations and contracting
- Quality audits
- Ongoing supplier relationship management
- Development of new innovations
- Establishment of materials and inventory plans
- Process improvements
- Risk mitigation / supply continuity planning

Activities in Production/ Operations

- Incoming receipt and inspection of materials
- Inventory management and disposal
- Staging of materials
- Production of product
- Maintenance and sanitation
- Operations process improvements
- Quality inspection
- Packaging
- Storage of finished goods



Activities in Logistics and Distribution



- Loading of trucks/railcars
- Adding packaging or shipping materials
- Coordinating with export management
- Forwarding to warehouses or distribution centers
- Direct shipping to customers
- Working with a 3PL (Third-Party Logistics Provider)

Activities Linked to Customer and Consumer



- Slotting of products in store
- Design of merchandising/displays
- QR codes for information
- Couponing
- Bar code reading / sales trends
- Hotlines and consumer feedback processes /packaging



A Fast Growing Field...

Supply chain management is one of the fastest growing areas in business, as companies continue to leverage their supply chains to create a competitive advantage. Entry and mid-level positions within the field continue to increase in scope and complexity as workers advance toward management levels.

A Fast Growing Field...(cont'd)

By the year 2020, there will be an additional 325,000 job openings in the SCM field.

As such, the greatest talent shortages remain within the entry and mid level roles (20% and 60% respectively).

Supply Chain Insights, LLC - Supply Chain Talent, and CSCMP.

Labor Market Evaluation

Position Category	Details	Projected Job Growth
Logistics	<ul style="list-style-type: none">Analyze and coordinate an organizations' supply chain/work on distribution, allocation and delivery to customer and consumer	<ul style="list-style-type: none">Projected to grow by 22% between 2012 and 2022
Procurement Buyers / Purchasing Agents	<ul style="list-style-type: none">Material and service acquisition, negotiations and contracting/supplier management	<ul style="list-style-type: none">Projected to grow by 4% between 2012 and 2022

*Bureau of Labor Statistics – Occupational Outlook Handbook 2014-2015

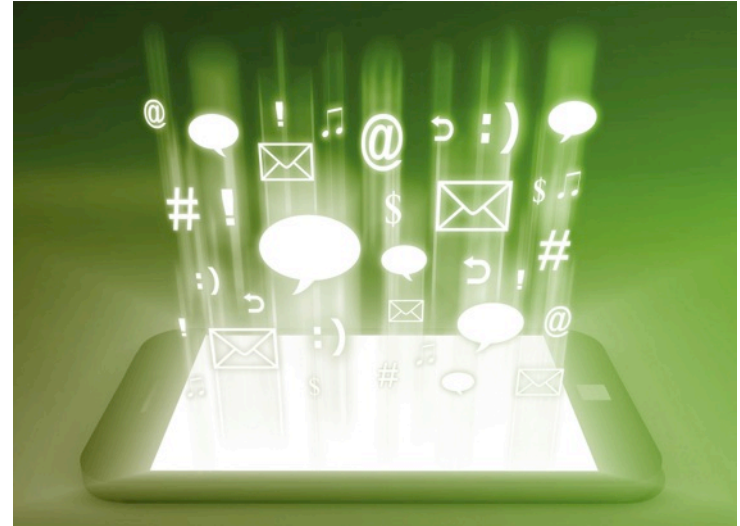
The Transportation Industry

- Nationally, 10 Million people are employed in transportation and transportation related industries (correlated heavily with overall economic health)
- Through 2022, transportation and logistics will generate about 19,900 new jobs in Illinois
- Increased credential and degree requirements are becoming necessary for many of these roles
- Much demand will be tied to retiring workers, the expansion of e-commerce and environmental regulations
- Majority of growth will occur in:
 - Transportation Operations
 - Logistics Planning and Management
 - Warehousing and Distribution Center Operations
 - Facility and Mobile Equipment Maintenance

*Illinois Department of Employment Security (IDES) 2012 – 2022 projections

Dynamic Industry Trends

- Supply chains have become more global
- Safety and quality are critical priorities
- Consumers want information / social media platforms
- Consumers want options and immediate availability
- Environmental sustainability
- Financial and economic challenges




Harper College Department of Career and Technical Programs (CTP)

Currently Offers the Following Supply Chain Management Certifications:

Certificate	Credit Hours
Inventory Control/Production Control	12
Physical Distribution	12
Purchasing	12
Supply Chain Management	18

Current Courses Include

Certificate Option	Course #	Credit Hrs	Course Titles
Inventory Control/ Production Control	<ul style="list-style-type: none"> • SCM 101 • SCM 120 • SCM 122 • SCM 226 	<ul style="list-style-type: none"> 3 3 3 3 	<ul style="list-style-type: none"> • Supply Chain Management • Production Control Concepts • Inventory Control • Material Requirements Planning (MRP)
Physical Distribution	<ul style="list-style-type: none"> • SCM 101 • SCM 121 • SCM 122 • SCM 227 	<ul style="list-style-type: none"> 3 3 3 3 	<ul style="list-style-type: none"> • Supply Chain Management • Principles of Physical Distribution • Inventory Control • Just-in-Time (JIT)
Purchasing	<ul style="list-style-type: none"> • SCM 101 • SCM 122 • SCM 125 • SCM 259 	<ul style="list-style-type: none"> 3 3 3 3 	<ul style="list-style-type: none"> • Supply Chain Management • Inventory Control • Purchasing • Advanced Purchasing
Supply Chain Management *SCM 101 plus 12 credit hours from Group 1, and 3 credit hours from Group 2	<ul style="list-style-type: none"> • SCM 101 • SCM 120 • SCM 121 • SCM 122 • SCM 123 • SCM 124 • SCM 125 	<ul style="list-style-type: none"> 3 3 3 3 3 3 3 	<ul style="list-style-type: none"> • Supply Chain Management • Production Control Concepts • Principles of Physical Distribution • Inventory Control • Traffic and Transportation • Material Handling and Packaging • Purchasing
<div style="border: 1px solid black; padding: 5px; display: inline-block;">Group 2</div> 	<ul style="list-style-type: none"> • SCM 226 • SCM 227 • SCM 230 • SCM 259 	<ul style="list-style-type: none"> 3 3 3 3 	<ul style="list-style-type: none"> • Material Requirements Planning (MRP) • Just-in-Time (JIT) • International Supply Chain Management • Advanced Purchasing

Current SCM Specialization is also part of the **A.A.S. Advanced Manufacturing Technology Degree**

Course Number	Description	Credit Hours
SCM 101	Supply Chain Management	3
SCM 120	Production Control Concepts	3
SCM 121	Principles of Physical Distribution	3
SCM 122	Inventory Control	3
SCM 125	Purchasing	3
SCM 226	Material Requirements Planning (MRP)	3
SCM 227	Just-In-Time (JIT)	3
SCM 259	Advanced Purchasing	3
Additional	Technical Electives	5

A Variety of Class Offerings to Meet Student Needs

Modality	Details
Fast Track	<ul style="list-style-type: none">• Accelerated, small group cohort format• Group meets one night a week from 6:00 – 10:00 p.m. at HPC Higgins Road Location• Successful completion results in three certificates in less than one year
Evening	<ul style="list-style-type: none">• Blended class format with a combination of Lecture and Web content (most classes 8 weeks in length and held from 6:30 p.m. to 9:10 p.m.)• Classes held on main Harper campus and at HPC
Daytime	<ul style="list-style-type: none">• Blended class format with a combination of Lecture and Web content (most classes 8 weeks in length)• Classes held at various times on main Harper campus

Contact Us to Learn More

- Lisa Smith, MBA, CPSM
- Supply Chain Management Program Coordinator
- 847.925.6635
- lsmith2@harpercollege.edu
- Office Room H165a at Palatine campus