

Supply Chain Management (SCM)

Lisa Smith, MBA, CPSM

What is the Definition of Supply Chain Management (SCM)?

The people, processes and technologies that bring goods and services to customers and consumers.

A Visual Example of One Type of Supply Chain (Packaged Food)



Tier 2 Suppliers



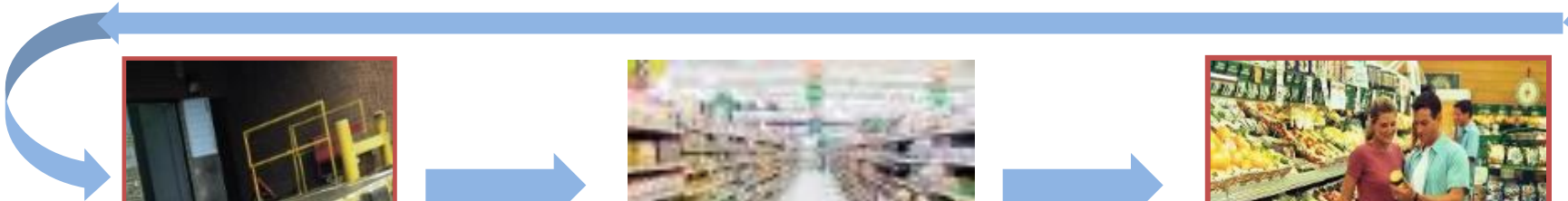
Tier 1 Suppliers



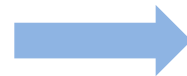
Raw Materials
Warehouse/Distribution



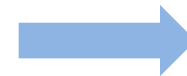
Consumer Products
Manufacturer



Finished Goods
Distribution



Customer



Consumer

Types of Jobs and Careers in Supply Chain Management

- Purchasing/Procurement and Supply Management
- Operations and Production Control
- Transportation and Logistics
- Warehouse Management
- Inventory Control
- Materials Management
- Demand Planning
- Customer Service and Fulfillment Operations
- Supply Chain Analytics and Coordination

Activities in Supply Management



- Buying raw materials or services
- Negotiating with suppliers
- Performing quality audits
- Developing new innovations
- Establishing materials and inventory plans
- Working on process improvements
- Performing strategic sourcing activities

Activities in Production/ Operations

- Receiving and inspecting of materials
- Managing inventory and waste
- Staging of materials
- Producing finished product
- Performing maintenance duties
- Working on process improvements
- Providing quality inspection
- Developing packaging



Activities in Logistics and Distribution



- Working with trucks or railcars
- Adding packaging or shipping materials
- Coordinating with export management
- Working with warehouses or distribution centers
- Shipping directly to customers
- Working with a 3PL (Third-Party Logistics Provider)

Activities Linked to Customer and Consumer



- Slotting of products in store
- Design/purchasing of merchandising and displays
- Receiving and analyzing sales data
- Working in customer fulfillment



A Fast Growing Field

By the year 2020, there will be an additional 325,000 job openings in the SCM field.

As such, the greatest talent shortages remain within the entry and mid level roles (20% and 60% respectively).

Supply Chain Insights, LLC - Supply Chain Talent, and CSCMP.

Labor Market Evaluation

Position Category	Details	Projected Job Growth
Logistics	<ul style="list-style-type: none">Analyze and coordinate an organizations' supply chain/work on distribution, allocation and delivery to customer and consumer	<ul style="list-style-type: none">Projected to grow by 22% between 2012 and 2022
Procurement Buyers / Purchasing Agents	<ul style="list-style-type: none">Material and service acquisition, negotiations and contracting/supplier management	<ul style="list-style-type: none">Projected to grow by 4% between 2012 and 2022

*Bureau of Labor Statistics – Occupational Outlook Handbook 2014-2015

Jobs and Salaries

Career / Title	Median Salary*
Buyers and Purchasing Agents	\$55,080
Cargo and Freight Agents	\$41,380
Logisticians and Logistics Analysts	\$73,870
Purchasing Managers	\$106,090
Distribution Managers	\$85,400
Transportation Planners	\$75,630

Data obtained from the Occupational Information Network (O*Net) under sponsorship of the US Department of Labor/Employment and Training Administration (USDOL/ETA)

Dynamic Industry Trends

- Supply chains have become more global
- Safety and quality are critical priorities
- Consumers want information / social media platforms
- Consumers want options and immediate availability – the Internet
- Environmental sustainability
- Financial and economic challenges



Harper College Department of Career and Technical Programs (CTP)

Currently Offers the Following Supply Chain Management Certifications:

Certificate	Credit Hours
Inventory/Production Control	12
Logistics	12
Procurement	12
Supply Chain Management	18

Current Courses – SCM Certificates

Certificate Option	Course Numbers	Credit Hours	Course Titles
Inventory/Production Control	<ul style="list-style-type: none"> • SCM 101 • SCM 120 • SCM 122 • SCM 226 	<ul style="list-style-type: none"> 3 3 3 3 	<ul style="list-style-type: none"> • Supply Chain Management • Production Control • Inventory Management • Advanced Planning and Integration
Logistics	<ul style="list-style-type: none"> • SCM 101 • SCM 123 • SCM 124 • SCM 228 	<ul style="list-style-type: none"> 3 3 3 3 	<ul style="list-style-type: none"> • Supply Chain Management • Transportation • Warehouse Operations • Logistics Design and Strategy
Procurement	<ul style="list-style-type: none"> • SCM 101 • SCM 122 • SCM 125 • SCM 259 	<ul style="list-style-type: none"> 3 3 3 3 	<ul style="list-style-type: none"> • Supply Chain Management • Inventory Management • Procurement • Sourcing and Supply Management
Supply Chain Management	<ul style="list-style-type: none"> • SCM 101 • SCM 120 • SCM 122 • SCM 123 • SCM 125 • SCM 126 	<ul style="list-style-type: none"> 3 3 3 3 3 3 	<ul style="list-style-type: none"> • Supply Chain Management • Production Control • Inventory Management • Transportation • Procurement • Demand Planning

Current SCM Specialization is also part of the **A.A.S. Advanced Manufacturing Technology Degree**

4 core manufacturing courses (MFT 102, 104, 108, 109), MFT 119 (internship), MTH 097, ENG 101 and 12 other general education requirements) PLUS:

Course Number	Description	Credit Hours
SCM 101	Supply Chain Management	3
SCM 126	Demand Planning	3
SCM 122	Inventory Control	3
SCM 120	Production Control	3
SCM 226	Advanced Planning and Integration	3
SCM 125	Procurement	3
SCM 123	Transportation	3
SCM 124	Warehouse Operations	3
Additional	Technical Electives	5

The LINCS Grant / CSCMP Alliance

- Harper is a part of a consortium of 12 colleges and universities participating in a Department of Labor (DOL) grant to build curriculum in supply chain (LINCS: Leveraging, Integrating, Networking, Coordinating supplies)
- Goal is to meet the growing demand for SCM roles
- Students enrolled are able to take Council for Supply Chain Management Professionals (CSCMP) industry certification exams at no cost through March, 2017
- Opportunity to earn additional, portable credentials for resume' and SCM educational experience

A Variety of Class Offerings to Meet Student Needs

Modality	Details
Fast Track	<ul style="list-style-type: none">• Accelerated, small group cohort format• Group meets one night a week from 6:00 – 10:00 p.m. at HPC Higgins Road Location in Schaumburg• Successful completion results in four stackable SCM certificates in slightly over one year
Blended	<ul style="list-style-type: none">• Blended class format with a combination of classroom and Web content (most classes 8 weeks in length and held from 6:30 p.m. to 9:10 p.m.)• Classes held on main Harper campus in Palatine, the Harper Professional Center in Schaumburg, and the Learning and Career Center in Prospect Heights

Contact Us to Learn More

- Lisa Smith, MBA, CPSM
- Supply Chain Management Program Coordinator
- 847.925.6635
- lsmith2@harpercollege.edu
- Office Room H165a at Palatine campus