

Corporate Mentorship Statistical Analyses

This report summarizes the multi-year analysis of the Corporate Mentorship Program. Participants who completed both pre-test and post-test are considered. Eight competency categories are evaluated. For each category and each fiscal year we compute the mean pre and post scores, the mean difference, paired t-test results, Cohen's d effect sizes, and 95% confidence intervals on the difference.

Pre-test participation is required for admission into the Corporate Mentorship program. However, response rate on post-tests has been low. This accounts for the low N relative to the total number of participants in the program. These data consider only students who completed both the pre-test and the post-test.

Statistical Analysis: FY23

Category	N	Pre Mean	Post Mean	Change	t-stat	p-val	Sig	Cohen d	95% CI
Career & Self Development	13	58.85	65.00	6.15	2.86	0.014	*	0.79	[1.47, 10.84]
Communication	13	55.19	62.50	7.31	3.79	0.003	**	1.05	[3.10, 11.51]
Critical Thinking	13	60.38	64.62	4.23	2.13	0.055		0.59	[-0.10, 8.56]
Equity and Inclusion	13	65.58	65.58	0.00	0.00	1.000		0.00	[-4.04, 4.04]
Leadership	13	58.65	61.73	3.08	1.34	0.206		0.37	[-1.94, 8.09]
Professionalism	13	64.04	66.35	2.31	1.56	0.146		0.43	[-0.92, 5.54]
Teamwork	13	60.00	64.04	4.04	1.83	0.092		0.51	[-0.76, 8.84]
Technology	13	65.38	65.19	-0.19	-0.16	0.874		-0.05	[-2.77, 2.38]

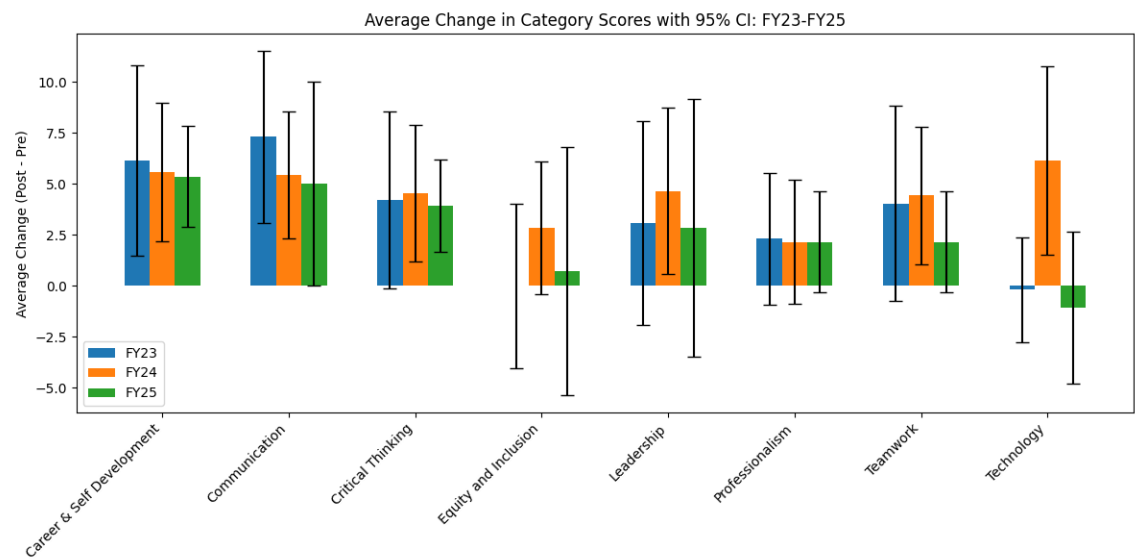
Statistical Analysis: FY24

Category	N	Pre Mean	Post Mean	Change	t-stat	p-val	Sig	Cohen d	95% CI
Career & Self Development	22	56.82	62.39	5.57	3.40	0.003	**	0.73	[2.17, 8.97]
Communication	22	55.23	60.68	5.45	3.65	0.002	**	0.78	[2.34, 8.56]
Critical Thinking	22	57.61	62.16	4.55	2.81	0.010	*	0.60	[1.18, 7.91]
Equity and Inclusion	22	61.93	64.77	2.84	1.81	0.085		0.39	[-0.43, 6.11]
Leadership	22	56.82	61.48	4.66	2.38	0.027	*	0.51	[0.59, 8.73]
Professionalism	22	60.80	62.95	2.16	1.47	0.155		0.31	[-0.89, 5.21]
Teamwork	22	57.27	61.70	4.43	2.72	0.013	*	0.58	[1.05, 7.82]
Technology	22	57.39	63.52	6.14	2.77	0.012	*	0.59	[1.53, 10.75]

Statistical Analysis: FY25

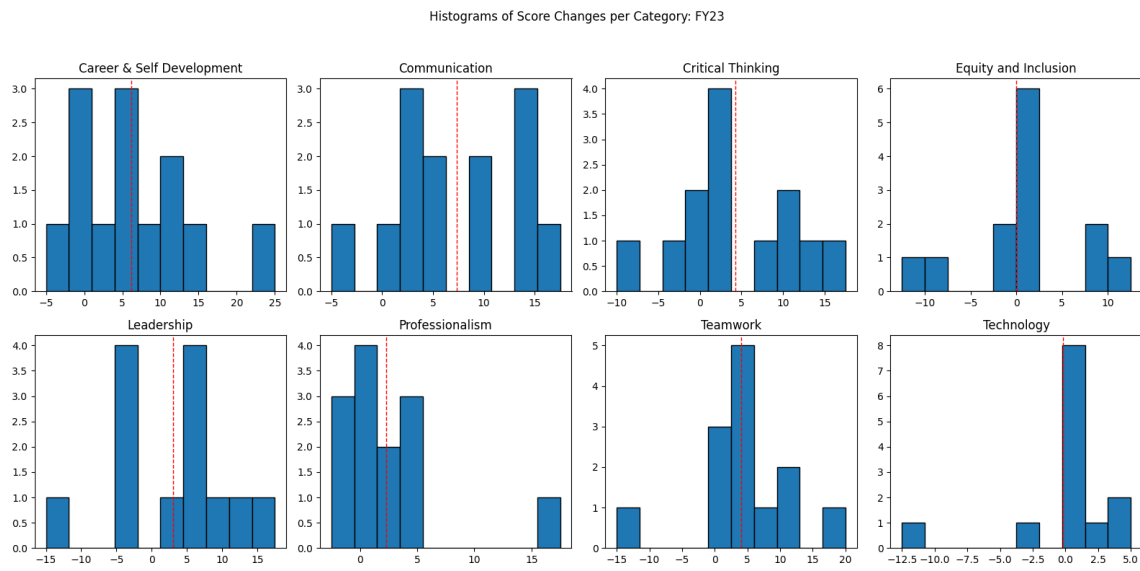
Category	N	Pre Mean	Post Mean	Change	t-stat	p-val	Sig	Cohen d	95% CI
Career & Self Development	7	60.71	66.07	5.36	5.30	0.002	**	2.00	[2.89, 7.83]
Communication	7	55.36	60.36	5.00	2.45	0.050	*	0.93	[0.01, 9.99]
Critical Thinking	7	56.79	60.71	3.93	4.26	0.005	**	1.61	[1.67, 6.18]
Equity and Inclusion	7	62.50	63.21	0.71	0.29	0.783		0.11	[-5.36, 6.79]
Leadership	7	57.86	60.71	2.86	1.11	0.311		0.42	[-3.46, 9.18]
Professionalism	7	61.43	63.57	2.14	2.12	0.078		0.80	[-0.33, 4.61]
Teamwork	7	59.29	61.43	2.14	2.12	0.078		0.80	[-0.33, 4.61]
Technology	7	63.57	62.50	-1.07	-0.70	0.510		-0.26	[-4.81, 2.67]

Confidence Interval Plot



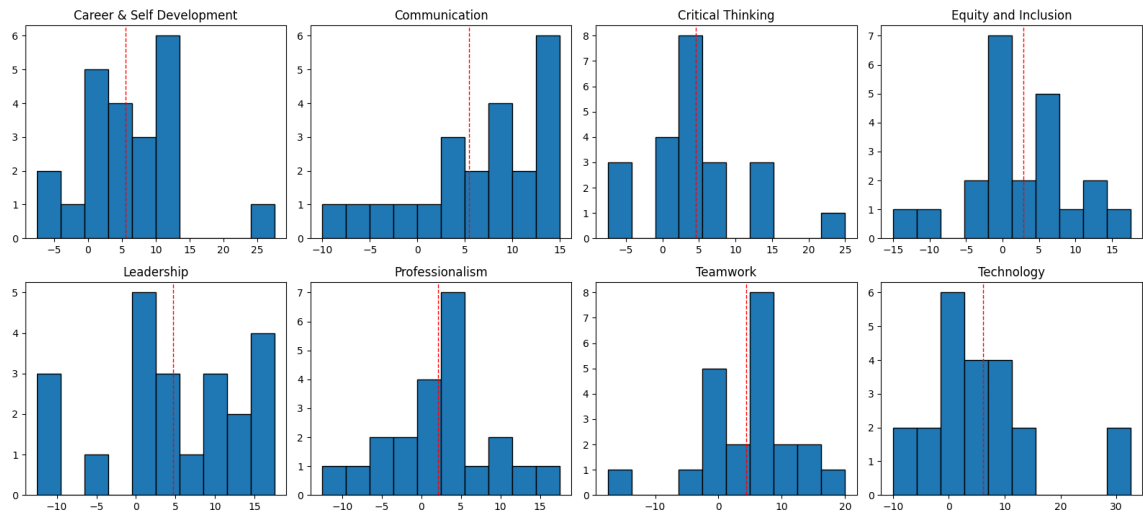
Histograms of Score Changes per Category

FY23



FY24

Histograms of Score Changes per Category: FY24



FY25

Histograms of Score Changes per Category: FY25

