



William Rainey Harper College

Master Plan
October 20, 2009





- Our Team
- Design and Consensus Building Process
- Initial Impressions
- Schedule
- Q & A

Organization Chart



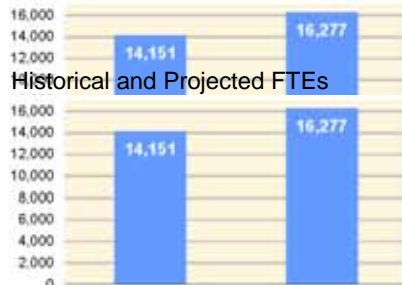


- Establish **Programmatic Needs**
- Enhance the **First Impression**
- Make more **Connections** which bring people together
- Retool and **Re-purpose Existing Buildings** for the future
- Develop methods for achieving **Sustainability** for buildings, grounds and infrastructure

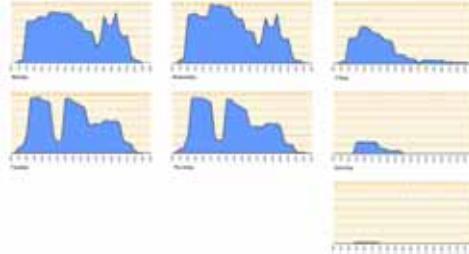
Establishing Programmatic Needs: Long Range Plan



Historical and Projected FTEs



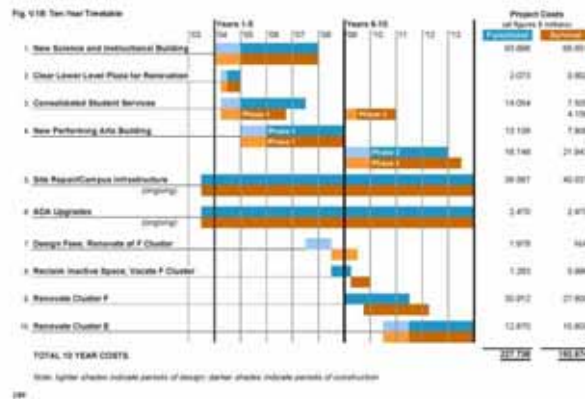
Classroom Use by Weekday



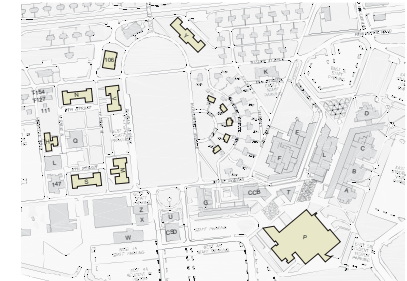
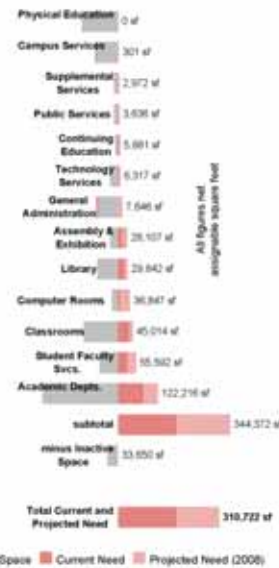
Space Assessment

	Fall 2006		Current		Fall 2008		Projected		Net Surplus/	
Overall Summary	Space Existing	Space Need	Space Existing	Space Need	Space Existing	Space Need	Space Existing	Space Need	Space Existing	Space Need
1. Classrooms	105,836 sf	140,421 sf	(34,585) sf	140,421 sf	140,421 sf	140,421 sf	140,421 sf	140,421 sf	140,421 sf	140,421 sf
2. Computer Rm	20,111 sf	20,111 sf	0 sf	20,111 sf	20,111 sf	20,111 sf	20,111 sf	20,111 sf	20,111 sf	20,111 sf
3. Academic Dept	221,846 sf	310,819 sf	(88,973) sf	310,819 sf	310,819 sf	310,819 sf	310,819 sf	310,819 sf	310,819 sf	310,819 sf
Subtotal Instructional	347,793 sf	471,351 sf	(123,558) sf	471,351 sf	471,351 sf	471,351 sf	471,351 sf	471,351 sf	471,351 sf	471,351 sf
Student FTEs	14,151 FTEs	14,151 FTEs	14,151 FTEs	14,151 FTEs	14,151 FTEs	14,151 FTEs	14,151 FTEs	14,151 FTEs	14,151 FTEs	14,151 FTEs
Net Assignable per FTE	25 sf	34 sf	25 sf	34 sf	25 sf	34 sf	25 sf	34 sf	25 sf	34 sf
4. Public Service	12,840 sf	16,068 sf	(3,228) sf	16,068 sf	16,068 sf	16,068 sf	16,068 sf	16,068 sf	16,068 sf	16,068 sf
5. Library	64,774 sf	84,214 sf	(19,440) sf	84,214 sf	84,214 sf	84,214 sf	84,214 sf	84,214 sf	84,214 sf	84,214 sf
6. Health/Phys Ed	111,714 sf	111,714 sf	0 sf	111,714 sf	111,714 sf	111,714 sf	111,714 sf	111,714 sf	111,714 sf	111,714 sf
7. Continuing Education	8,403 sf	14,559 sf	(6,156) sf	14,559 sf	14,559 sf	14,559 sf	14,559 sf	14,559 sf	14,559 sf	14,559 sf
8. Supplemental Services	10,413 sf	9,004 sf	1,409 sf	9,004 sf	9,004 sf	9,004 sf	9,004 sf	9,004 sf	9,004 sf	9,004 sf
9. Assembly & Exhibition	33,067 sf	30,814 sf	2,253 sf	30,814 sf	30,814 sf	30,814 sf	30,814 sf	30,814 sf	30,814 sf	30,814 sf
10. Student/Faculty Services	58,298 sf	65,714 sf	(7,416) sf	65,714 sf	65,714 sf	65,714 sf	65,714 sf	65,714 sf	65,714 sf	65,714 sf
11. Gen'l Administration	82,291 sf	96,930 sf	(14,639) sf	96,930 sf	96,930 sf	96,930 sf	96,930 sf	96,930 sf	96,930 sf	96,930 sf
12. Technology Services	25,237 sf	27,087 sf	(1,850) sf	27,087 sf	27,087 sf	27,087 sf	27,087 sf	27,087 sf	27,087 sf	27,087 sf
13. Campus Services	68,440 sf	68,500 sf	(60) sf	68,500 sf	68,500 sf	68,500 sf	68,500 sf	68,500 sf	68,500 sf	68,500 sf
Inactive Space	33,850 sf	0 sf	33,850 sf	0 sf	33,850 sf	0 sf	33,850 sf	0 sf	33,850 sf	0 sf
Subtotal Non-Instructional	492,138 sf	568,302 sf	(76,164) sf	568,302 sf	568,302 sf	568,302 sf	568,302 sf	568,302 sf	568,302 sf	568,302 sf
Total	840,031 sf	1,039,653 sf	(199,622) sf	1,039,653 sf	1,039,653 sf	1,039,653 sf	1,039,653 sf	1,039,653 sf	1,039,653 sf	1,039,653 sf
Student FTEs	14,151 FTEs	14,151 FTEs	14,151 FTEs	14,151 FTEs	14,151 FTEs	14,151 FTEs	14,151 FTEs	14,151 FTEs	14,151 FTEs	14,151 FTEs
Net Assignable per FTE	59 sf	73 sf	59 sf	73 sf	59 sf	73 sf	59 sf	73 sf	59 sf	73 sf
SURV Targets	961,701 sf	1,039,653 sf	1,039,653 sf	1,039,653 sf	1,039,653 sf	1,039,653 sf	1,039,653 sf	1,039,653 sf	1,039,653 sf	1,039,653 sf
Student FTEs	14,151 FTEs	14,151 FTEs	14,151 FTEs	14,151 FTEs	14,151 FTEs	14,151 FTEs	14,151 FTEs	14,151 FTEs	14,151 FTEs	14,151 FTEs
Net Assignable per FTE	68 sf	73 sf	68 sf	73 sf	68 sf	73 sf	68 sf	73 sf	68 sf	73 sf

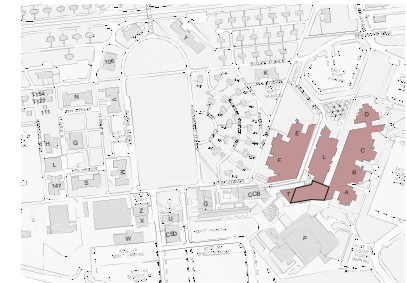
Ten-Year Timetable



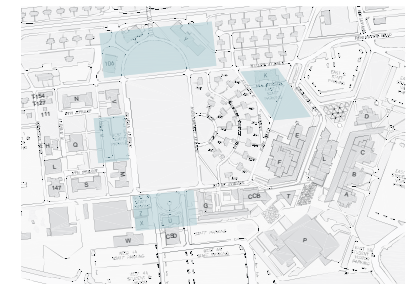
Space Assessment



Candidates for Reprogramming



Candidates for Rehabilitation



Candidates for New construction

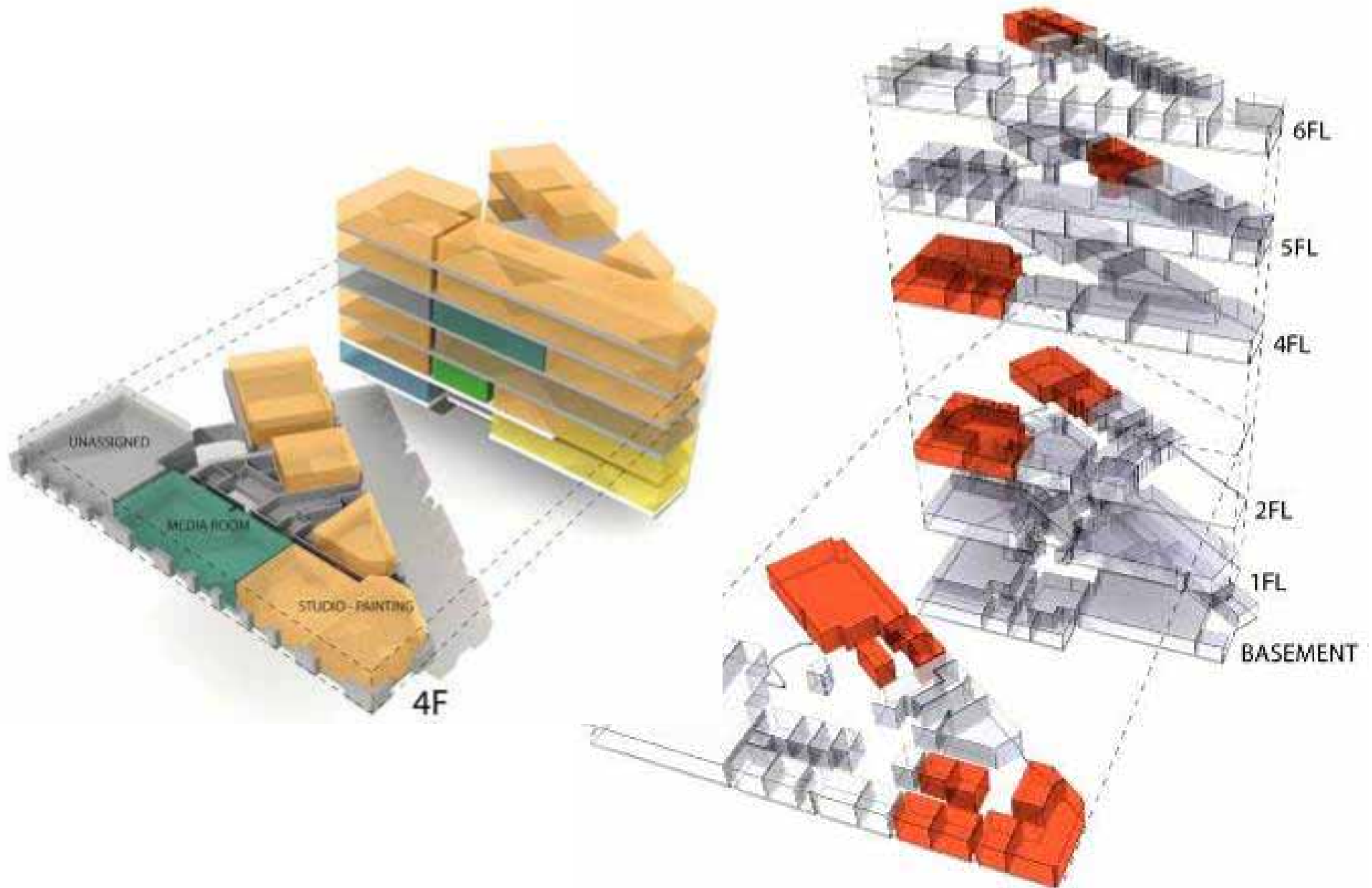
Nassau Community College Master Plan
Garden City, New York

Projecting Space Needs



Academic Departmental Summary						
Departmental Profile	Existing Fall 2006	Need Fall 2006	Need Fall 2016	Delta Exist & Need 2006	Delta Need 2006-2016	Total Need
Administration Leadership and Technology	6,670 sf	7,425 sf	7,863 sf	755 sf	438 sf	1,193 sf
Applied Psychology	15,370 sf	16,813 sf	24,269 sf	1,443 sf	7,456 sf	8,899 sf
Art and Art Professions	34,830 sf	46,207 sf	50,767 sf	11,377 sf	4,560 sf	15,937 sf
Humanities and Social Sciences	4,488 sf	6,464 sf	6,776 sf	1,976 sf	312 sf	2,288 sf
Media, Culture & Communication	8,686 sf	8,944 sf	9,756 sf	258 sf	812 sf	1,070 sf
Music and Performing Arts Professions	52,096 sf	74,487 sf	78,102 sf	22,391 sf	3,615 sf	26,006 sf
Nutrition, Food Studies, and Public Health	6,713 sf	8,661 sf	12,055 sf	1,948 sf	3,394 sf	5,342 sf
Occupational Therapy	4,277 sf	7,544 sf	8,513 sf	3,267 sf	969 sf	4,236 sf
Physical Therapy	8,598 sf	9,950 sf	11,275 sf	1,352 sf	1,325 sf	2,677 sf
Speech-Language Pathology	6,109 sf	7,013 sf	7,469 sf	904 sf	456 sf	1,360 sf
Teaching and Learning	14,722 sf	19,578 sf	21,765 sf	4,856 sf	2,187 sf	7,043 sf
Total Departmental Assignable Square Feet	162,559 sf	213,086 sf	238,610 sf	50,527 sf	25,524 sf	76,051 sf
Non-Academic Departments						
Central Services (Storage)	569 sf	1,000 sf	1,000 sf	431 sf	0 sf	431 sf
Graduate Admissions	3,006 sf	3,644 sf	3,863 sf	638 sf	219 sf	857 sf
Metro Center	10,576 sf	10,576 sf	10,576 sf	0 sf	0 sf	0 sf
Opportunity Programs (HEOP & CSTEP)	6,120 sf	9,958 sf	11,239 sf	3,838 sf	1,281 sf	5,119 sf
Ruth Horowitz Center	3,483 sf	3,483 sf	3,483 sf	0 sf	0 sf	0 sf
Steinhardt Administration	9,519 sf	10,175 sf	10,175 sf	656 sf	0 sf	656 sf
Student Services & Public Affairs	5,485 sf	5,781 sf	6,219 sf	296 sf	438 sf	734 sf
Total Non-Academic Departmental Assignable Square Feet	38,758 sf	44,617 sf	46,555 sf	5,859 sf	1,938 sf	7,797 sf

Optimizing Adjacencies





First Impressions: Architecture & Parking



First Impressions: Water as Opportunity



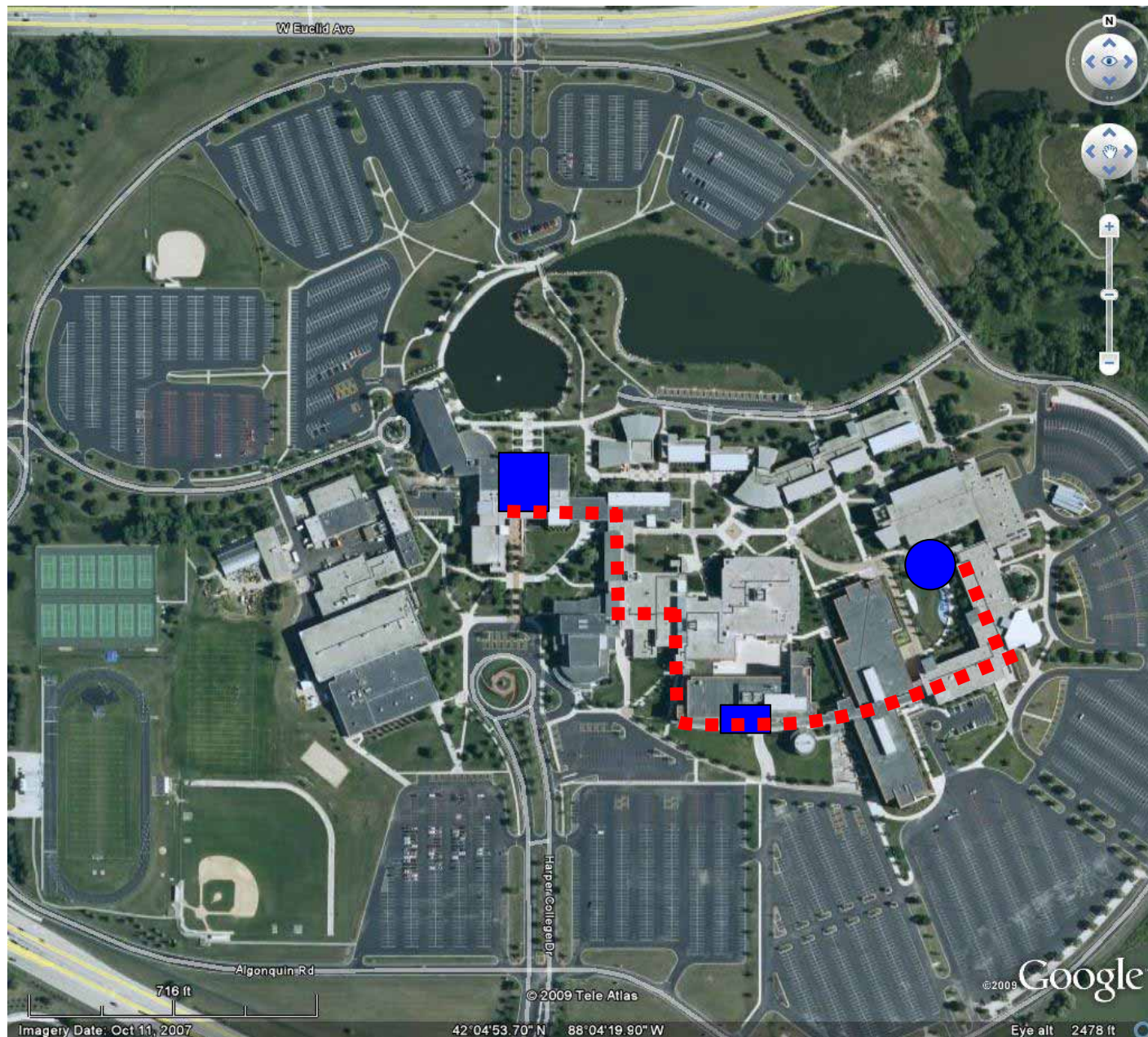
Combining Architecture & Landscape - George Mason University



First Impression: A New Campus Entry – SUNY New Paltz



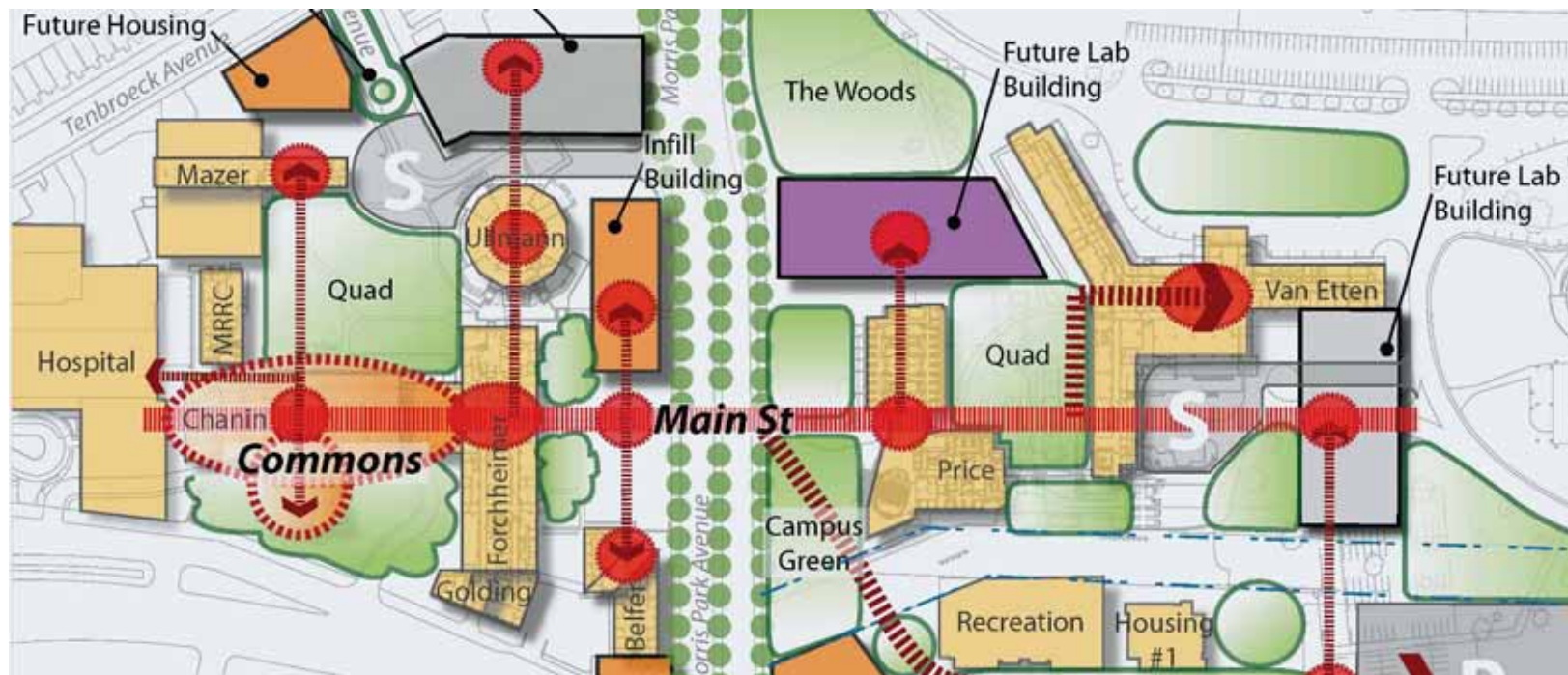
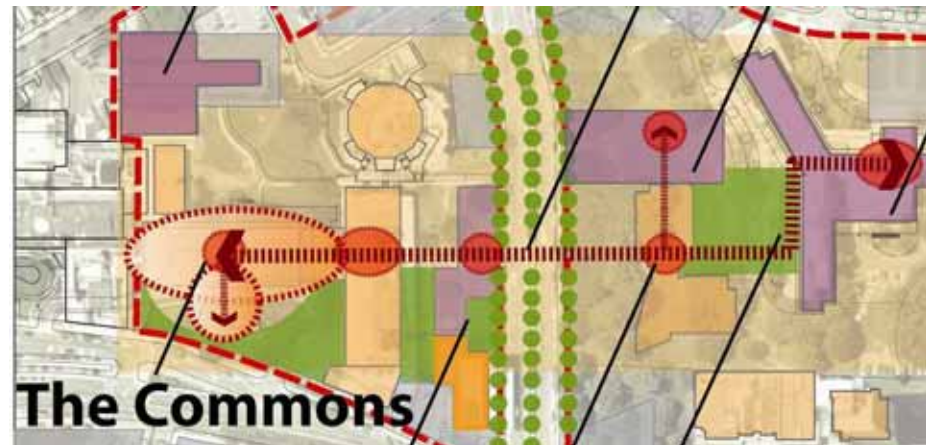
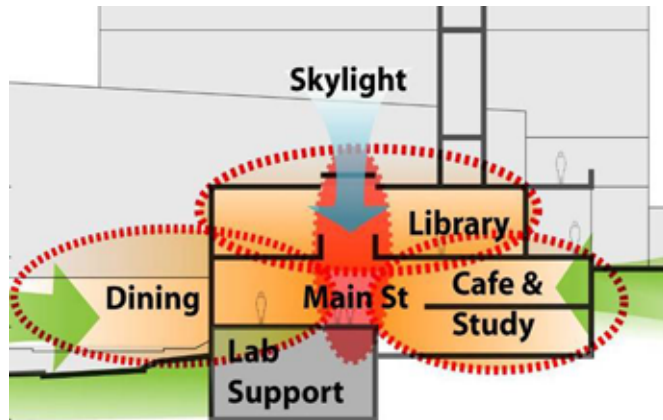
Making Connections



Harper Interior Connections



Creating Main Street - Albert Einstein College of Medicine



Albert Einstein College of Medicine – Main Street



Harper Exterior Connections





Integrated Landscape & Building Projects – St. John's College



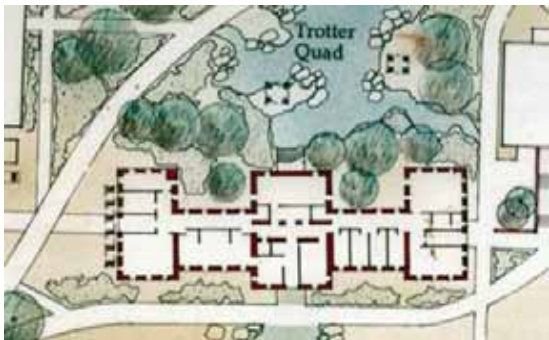
Creating Connections - SUNY New Paltz



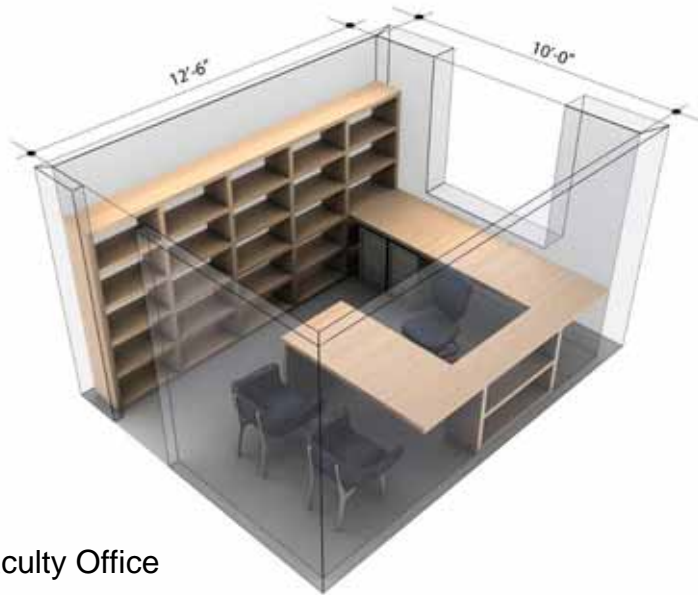
Creative Approach to Existing Buildings



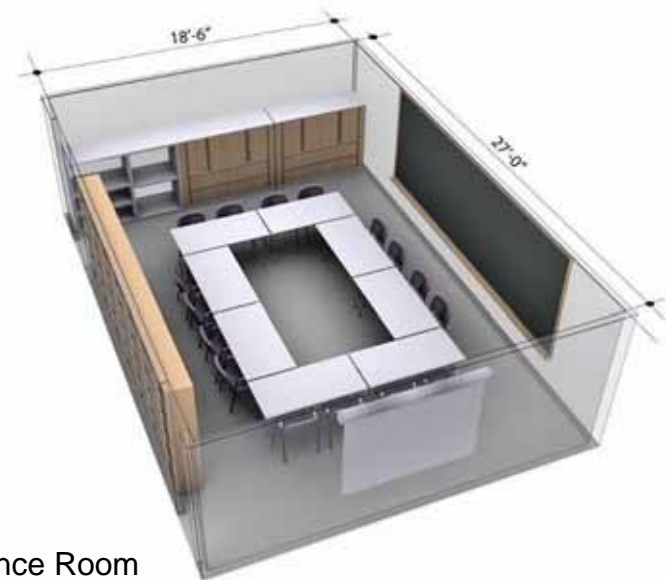
Existing Buildings: Swarthmore College – Trotter Hall



Steinhardt Space Needs – Space Prototypes



Faculty Office



Conference Room



Work Station



Medium Practice

Existing Buildings: Einstein – Van Etten Building





Managing Storm Water



The Dell - UVa







Creative Analysis

- **Campus Profile**
 - Review previous reports to understand mission, goals, aspirations
 - Meet with key campus representatives
- **Site and Building Analysis**
 - Tour campus and facilities
 - Context, site layout, circulation, buildings, landscape, parking review
 - Sustainability review
- **Understanding Academic and Space Needs**
 - Review Academic Master Plan

Creative Analysis Summary Enables Consensus on Key Client Decisions:

- Campus Mission & Goals
- Facility Capacity
- Critical Maintenance Issues and Priorities
- Space Needs
- Design Principles



Master Plan Concepts

- **Developing Campus Potential**
 - Public environment: special, unique places
 - Sites for new buildings
 - Refocusing existing buildings
 - Integration of buildings and landscape
 - Sustainability
 - Budgets and phasing

- **Progress Meetings**
 - Presentation of ideas
 - Discussion and brainstorming
 - Site Plan layouts
 - Sketches



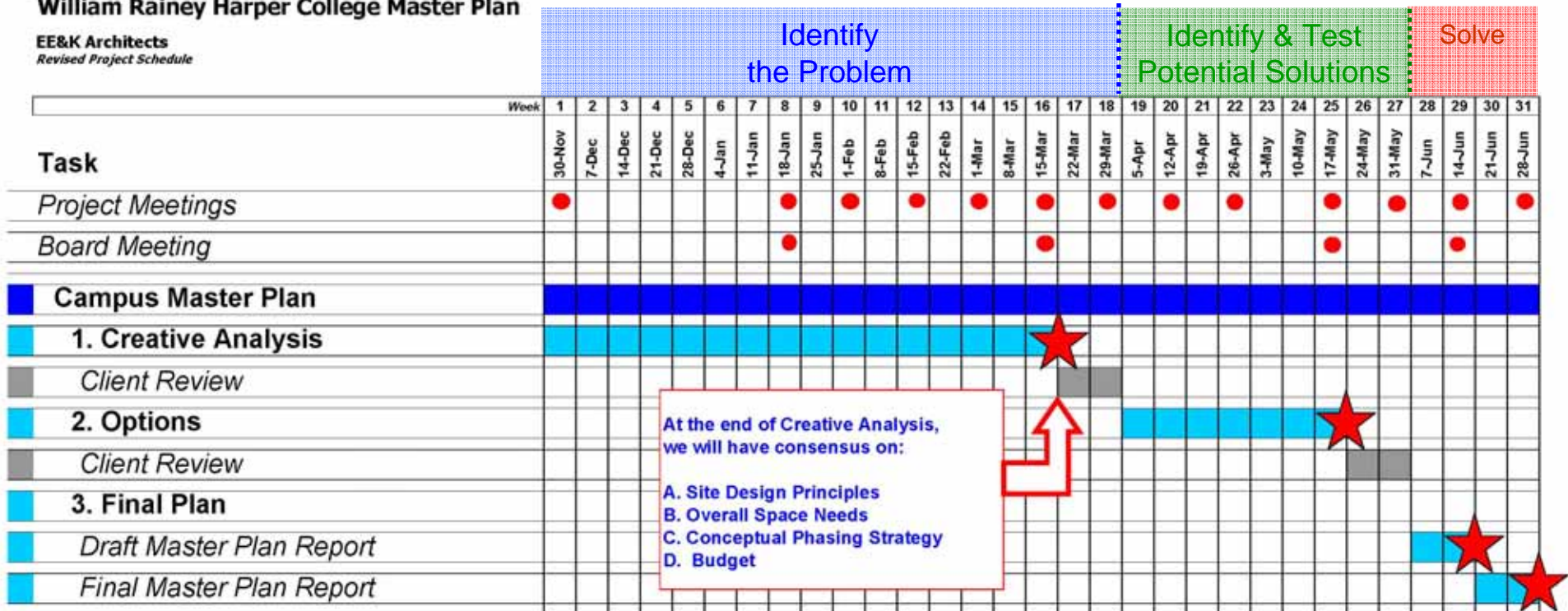
Master Plan Recommendations

- **Synthesis**
 - Public environment: special, unique places
 - Sites for new buildings
 - Refocusing existing buildings
 - Integration of buildings and landscape
 - Sustainability
 - Budgets and phasing
- **Summary**
 - Documentation of ideas
 - Site Plans
 - Vignettes



William Rainey Harper College Master Plan

EE&K Architects
Revised Project Schedule



Creating a Vision for Harper College

