

- DRAFT -

Harper College

Budget Public Hearing

Fiscal Year 2012

August 17, 2011

AGENDA

- Budget Parameters
- All Funds
- Tax Capped Funds
 - Budget
 - Revenue
 - Expenditures by Object
- Capital Projects Summary

Fiscal Year 2012 Budget Parameters

- Balanced Budget or Better
- Minimal new spending
- State Funding at 100%
- Property Tax tied to 1.5% CPI Increase
- Slight Enrollment Increase
- Tuition Increase of \$4/Credit Hour
- Construction and Renovation Fee Increase of \$2/Credit Hour
- Salary and Benefits Increases

Fiscal Year 2012 Budget

Total Tax Capped and All Funds Summary

(\$ Millions)

	Total Tax Capped Funds	All Funds
Total Revenue	\$110.0	\$201.7
Expenditures	\$106.8	\$222.0
Fund Transfer	(\$3.2)	-
Net Change	\$0.0	(\$20.3)

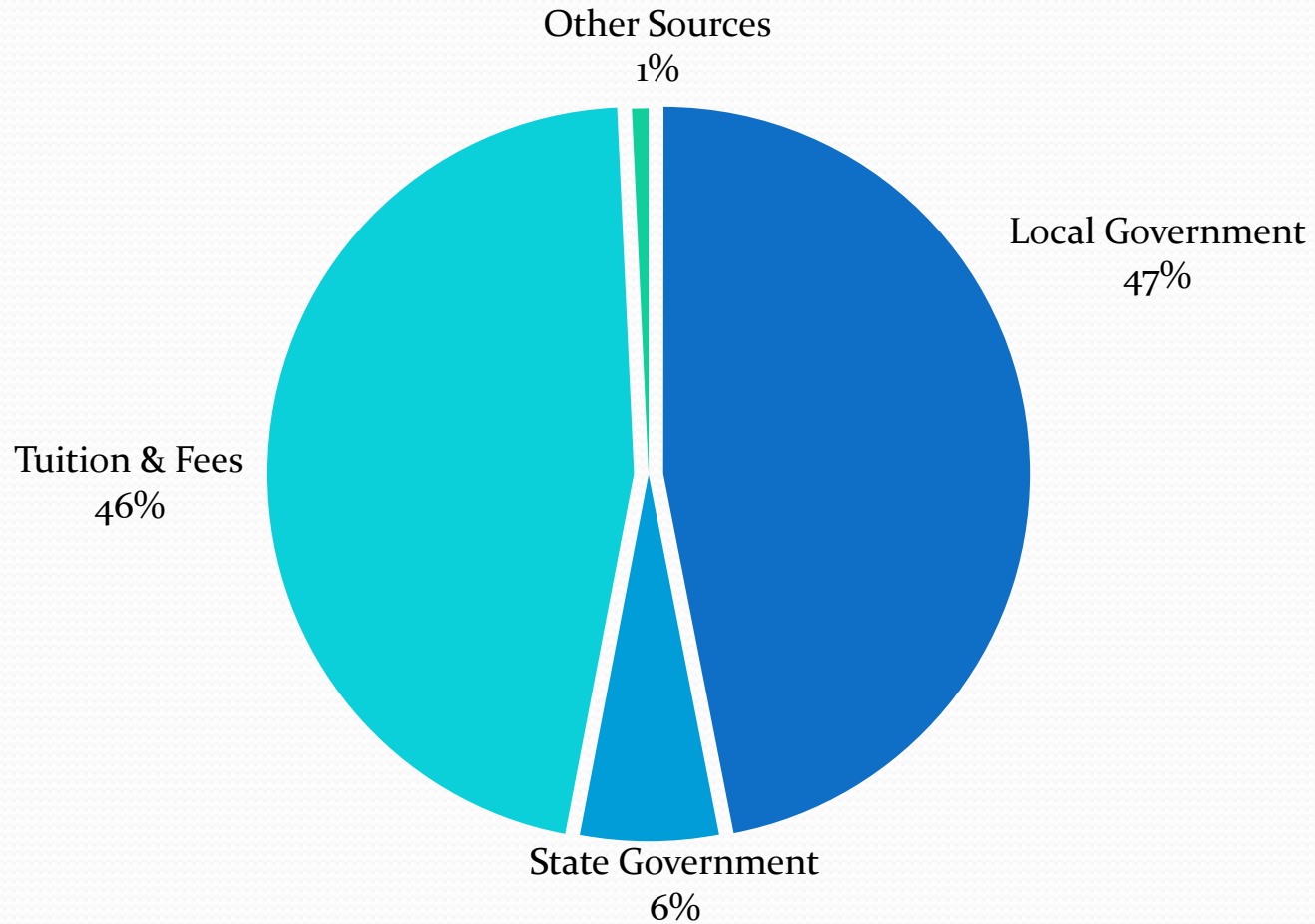
Fiscal Year 2012 Budget

Tax Capped Funds

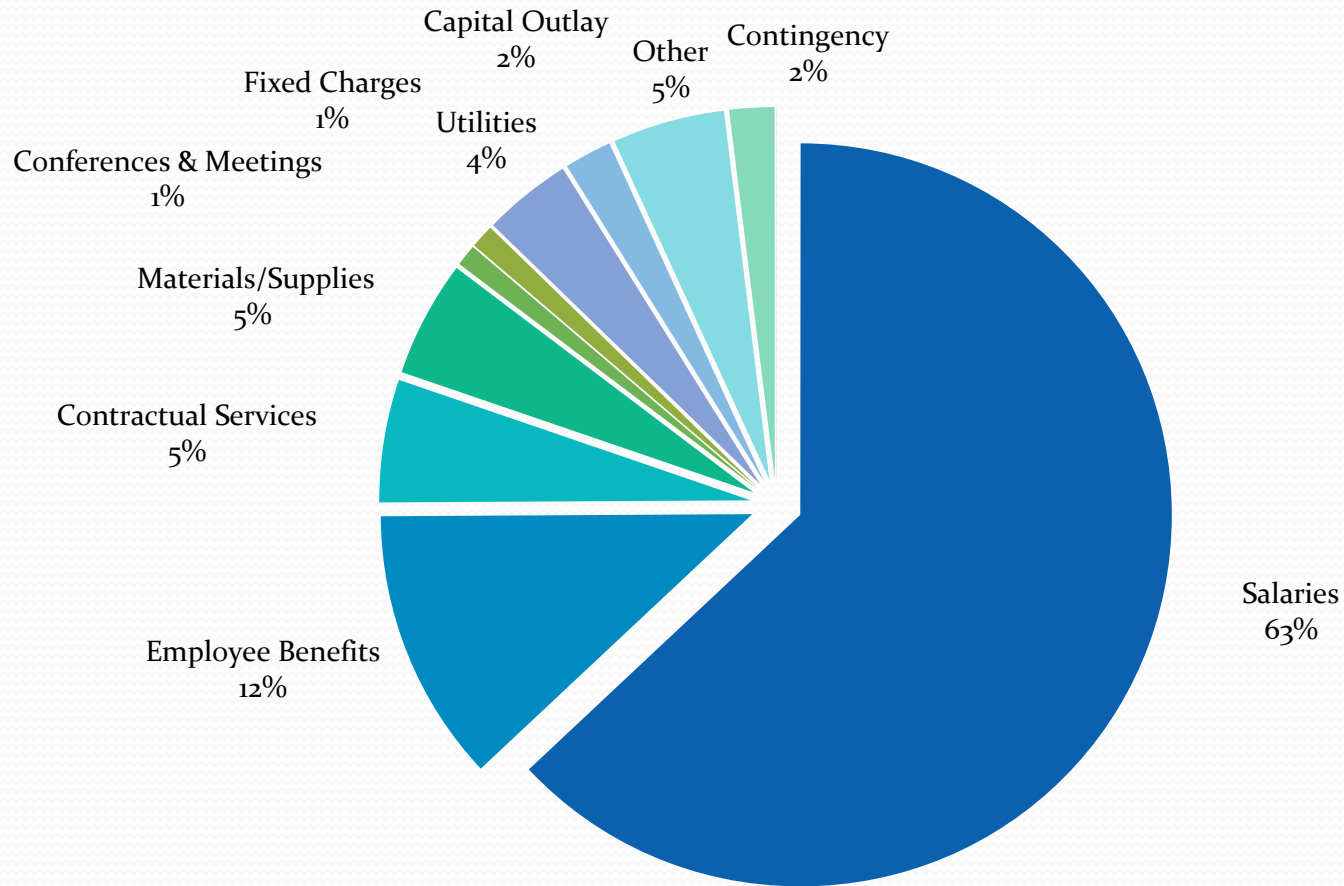
(\$ Millions)

	Education Fund	O&M Fund	Audit Fund	Liability Fund	Total Tax Capped Funds
Local Government	\$35.3	\$15.2	\$.1	\$1.0	\$51.6
State Government	6.7	-	-	-	6.7
Tuition & Fees	48.3	2.6	-	-	50.9
Other	.7	.1	-	-	.8
Total Revenue	\$91.0	\$17.9	\$.1	\$1.0	\$110.0
Expenditures	\$86.6	\$17.9	\$.1	\$2.2	\$106.8
Fund Transfer	(\$3.2)	-	-	-	(\$3.2)
Fund Balance Change	\$1.2	\$0	\$0	(\$1.2)	\$0

Tax Capped Funds - Revenue



Tax Capped Funds - Expenditures by Object



Fiscal Year 2012 Capital Budget Objectives

- Support Instructional Programs
- Maintain Campus Facilities
- Begin Work on the Master Plan

Capital Projects – FY 12

	Project Estimated Cost	FY12 Budget Request	
Building Integrity	\$ 3,586,100	\$ 2,123,800	
Cost Savings	198,000	50,000	
Program Support	137,924,025	22,069,275	*
Safety and Statutory	9,794,275	6,829,075	
System Reliability	1,518,000	682,000	
Contingency		\$ 3,000,000	
Total Capital Projects	\$ 153,020,400	\$ 34,754,150	

* As the table above shows, \$22 million is estimated for projects that support academic programs. Three of those projects are part of the State's Resource Allocation Management Plan (RAMP).