

Institutional Effectiveness Measures

Committee of the Whole

Wednesday, December 14, 2011

Overview

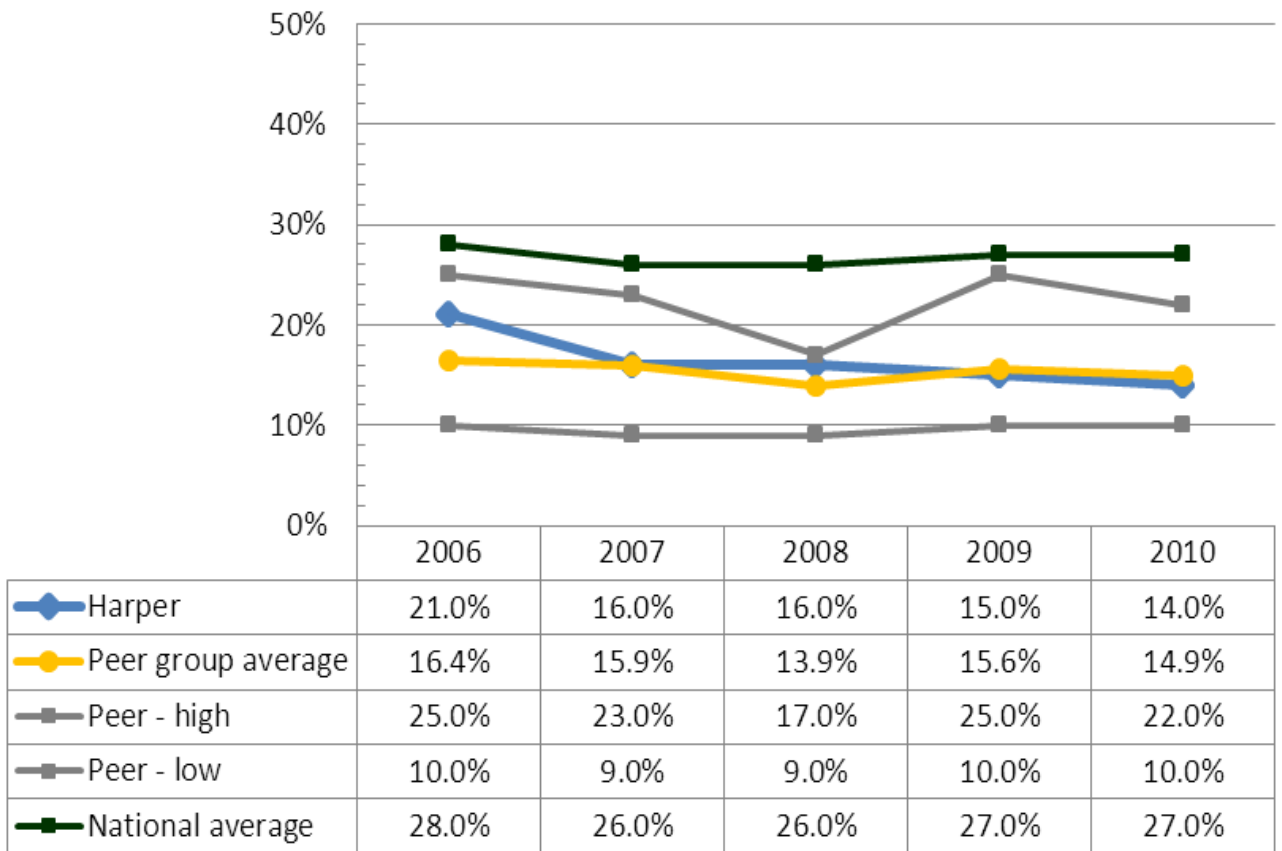
- Process
- Review of Institutional Effectiveness Measures
- Survey
- Sharing of Results
- Moving forward

Process

- Targeted Performance Improvement Framework developed
 - Expected – If we continue on our current path, this targets represents the expected outcome.
 - Improvement – A challenging, yet attainable target that can be achieved through increased effort.
 - Stretch – A target achieved only if the measure is prioritized and institutional focus is placed on dramatic improvement.
- Review of historical and comparison data by Accountability Team
- Input groups identified
 - 26 groups
- Input sessions conducted
 - 18 sessions
 - Over 100 people attended
- IEM priorities survey (all campus)
 - Over 600 employees responded

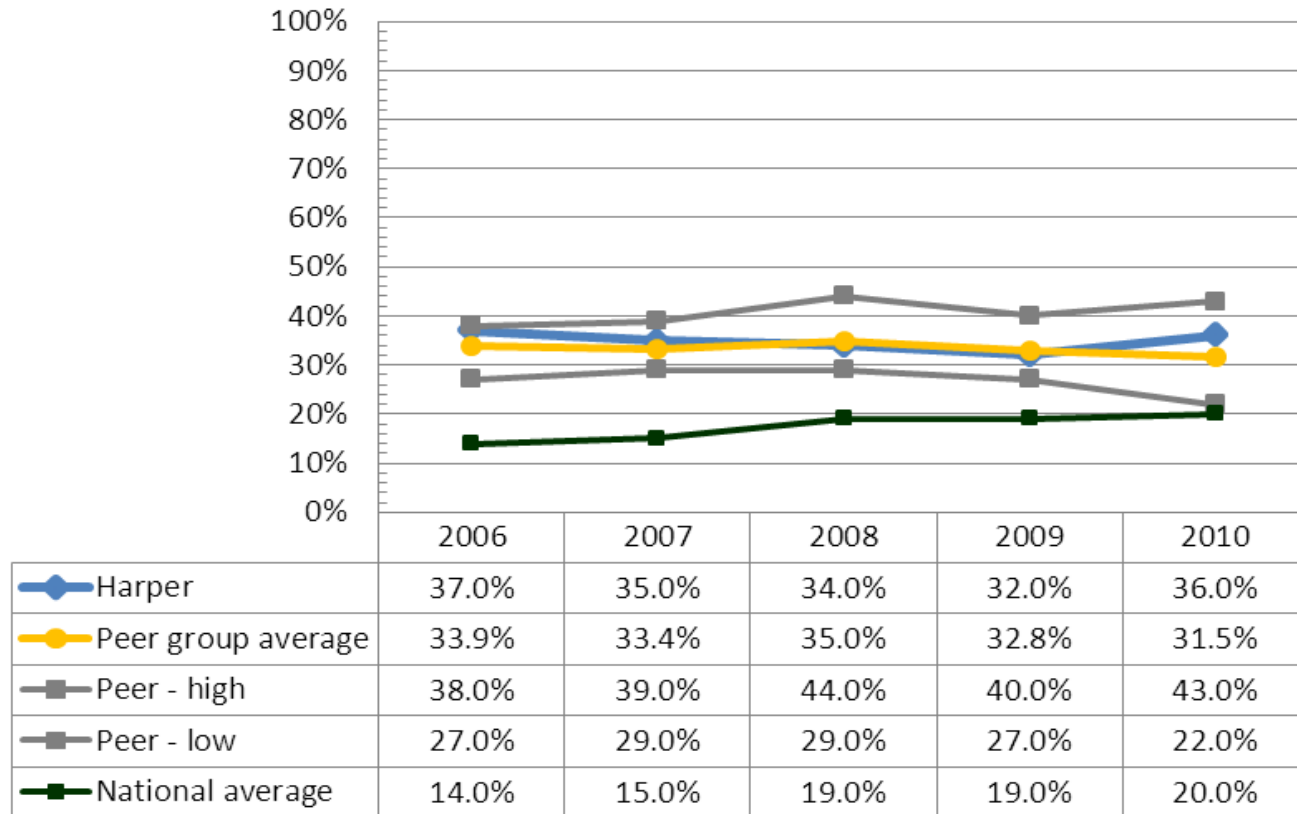
Graduation Rate

Full definition: Percent of full-time, first-time, degree/certificate-seeking students who completed a degree or certificate within three years of initial enrollment.



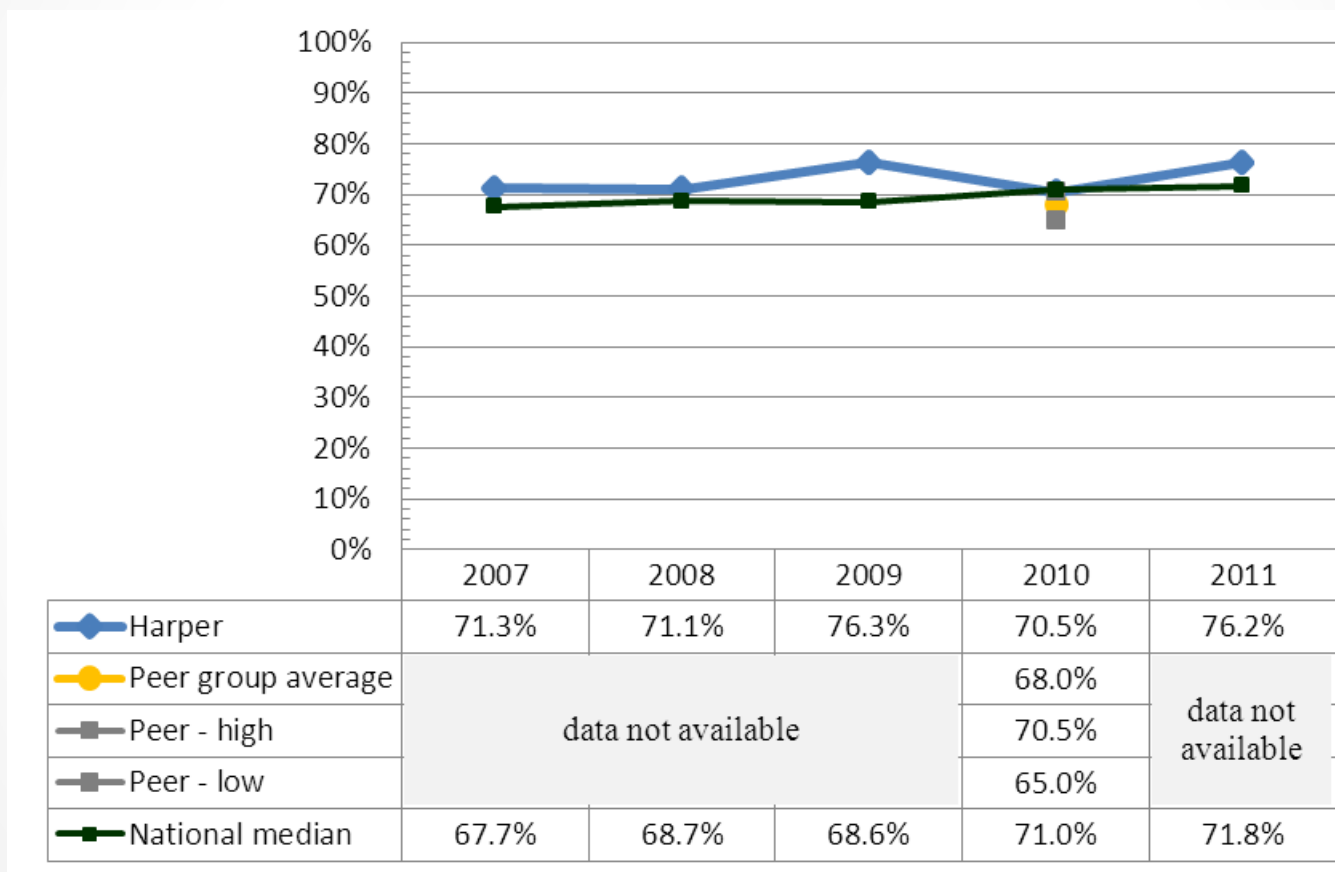
Transfer Out Rate

Full definition: Percent of first-time, full-time, degree/certificate-seeking students who are enrolled at another institution within three years of initial enrollment.



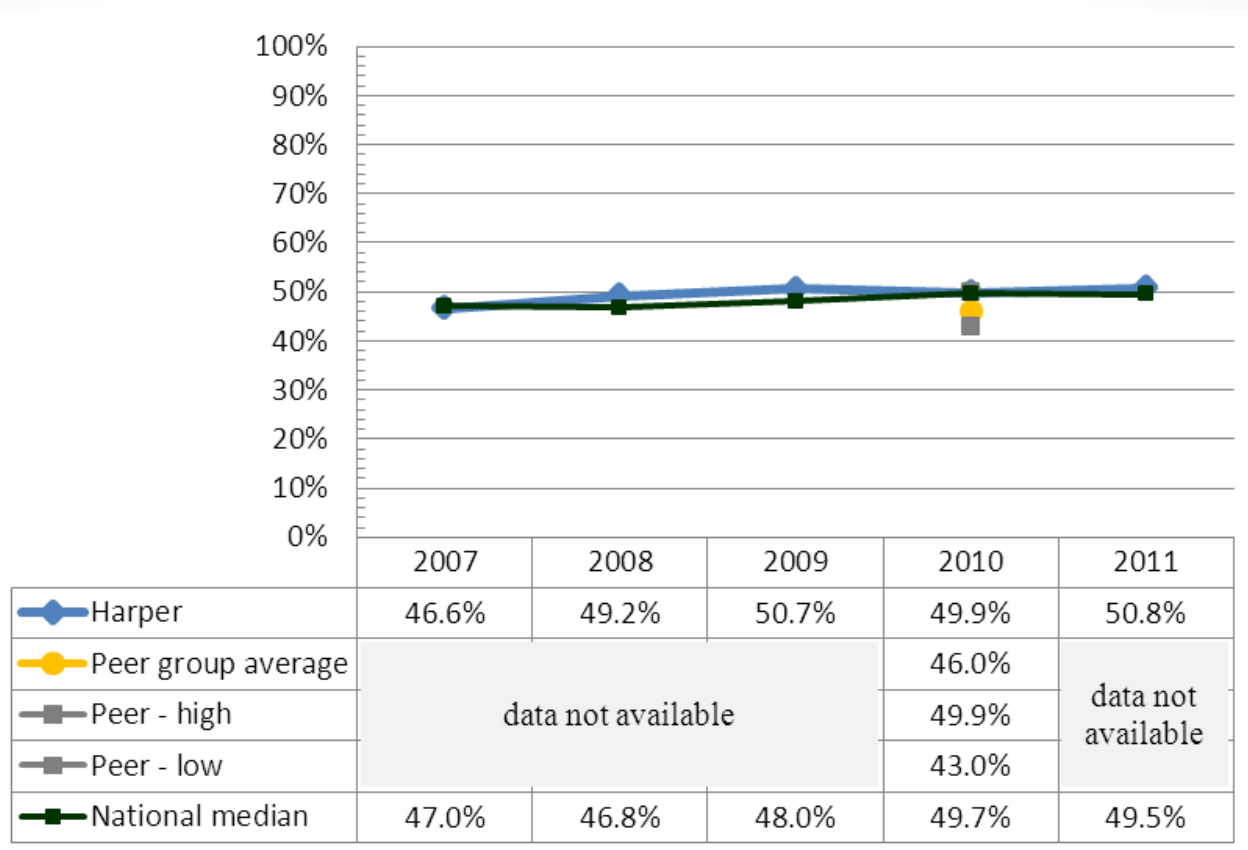
Persistence Rate: Fall to Spring

Full definition: Percent of fall entering cohort of full and part-time students who re-enroll spring of the same fiscal year.



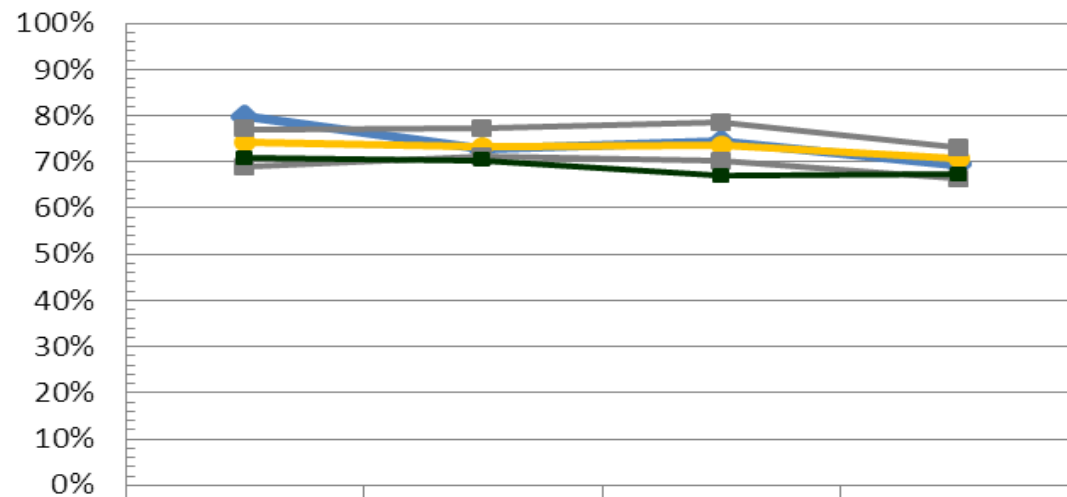
Persistence Rate: Fall of Year One to Fall of Year Two

Full definition: Percent of fall entering cohort of full-time and part-time students who re-enroll the following fall.



Student Advancement Rate

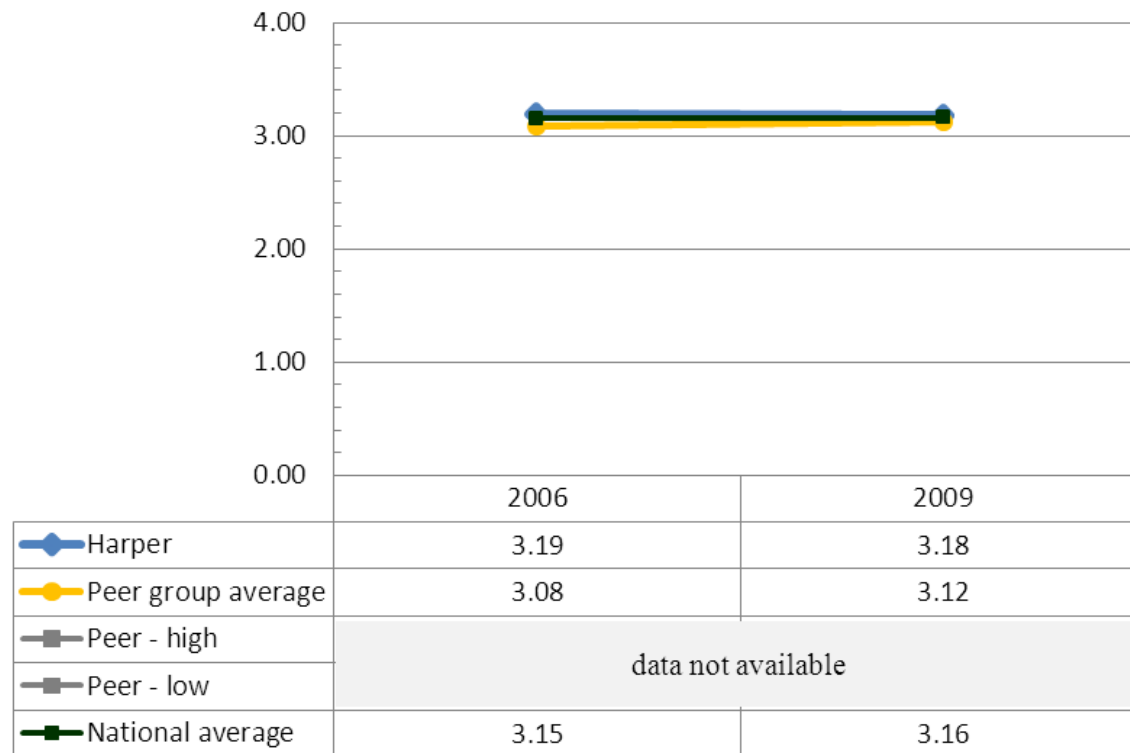
Full definition: Percent of first-time, full-time, degree/certificate-seeking students who initially enrolled fall semester and who by spring three years later graduated, transferred or continued to enroll at Harper.



	2006	2007	2008	2009
Harper	79.8%	72.8%	74.4%	69.3%
Peer group average	74.4%	73.4%	73.7%	70.8%
Peer - high	77.0%	77.3%	78.5%	73.1%
Peer - low	68.9%	71.1%	70.2%	66.4%
Statewide average	70.8%	70.3%	66.9%	67.3%

Student Satisfaction

Full definition: Survey item #27: How would you evaluate your entire educational experience at this college? (1 = poor, 2 = fair, 3 = good, 4 = excellent)



Graduate Achievement of Objective

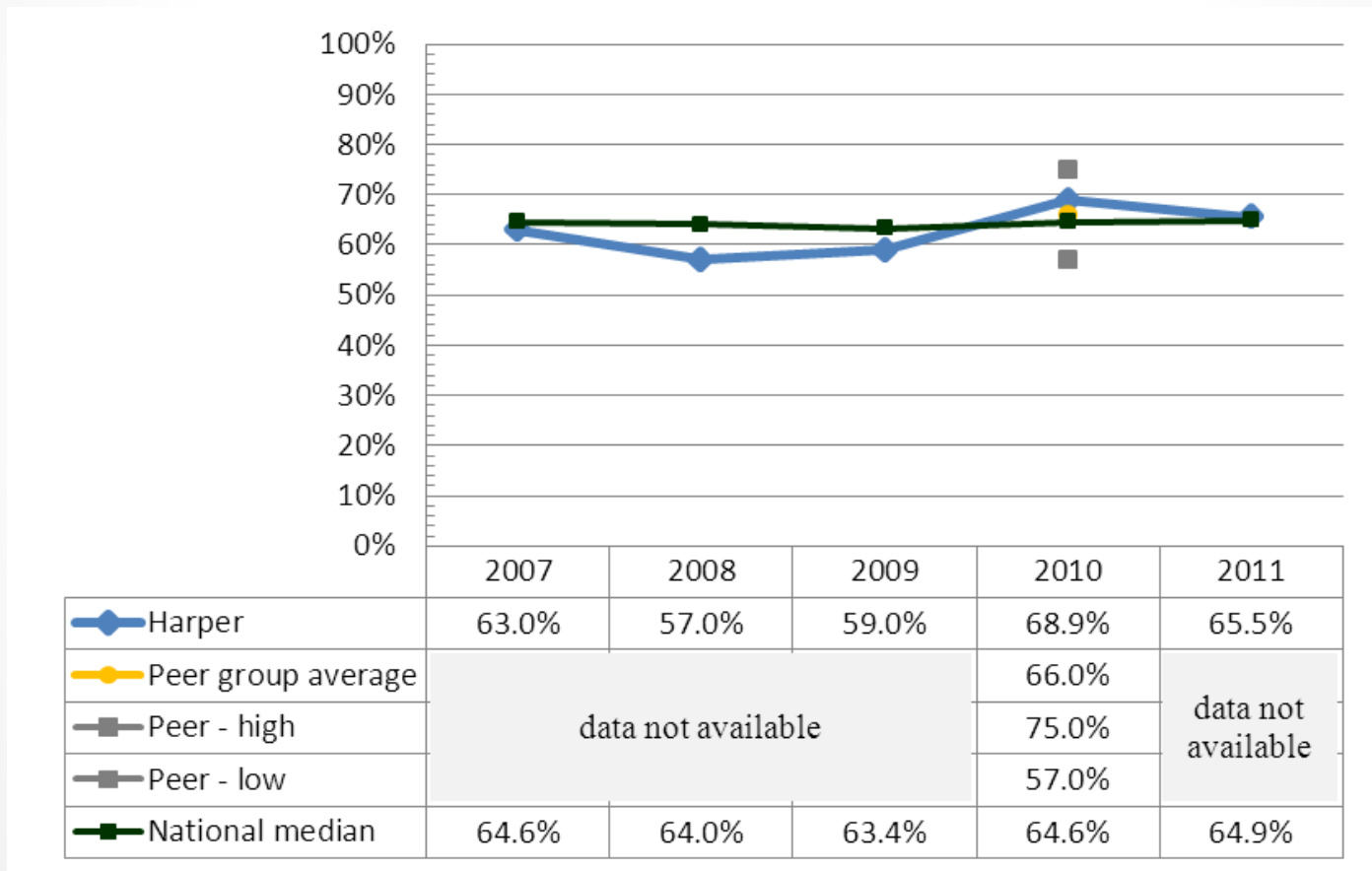
Full definition: Combined affirmative responses to items on the Transfer and Career Graduate Surveys.

- Transfer Graduate Survey: To what extent were you successful in achieving your educational objectives?
- Career Graduate Survey: Overall, how satisfied are you that your program provided you with the skills required for your job?



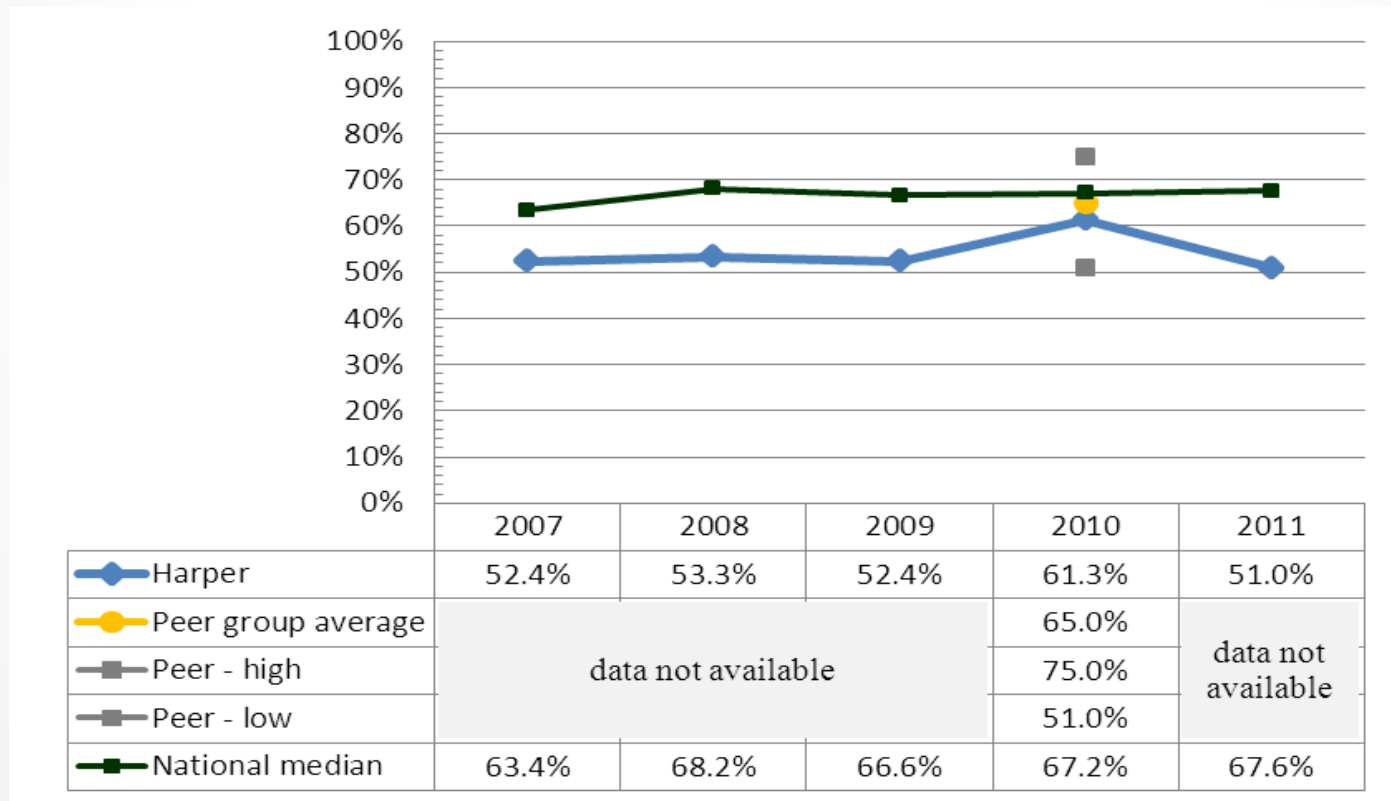
Developmental Writing Success Rate

Full definition: Students who were enrolled in developmental English (including ENG100) in first fall term and earned a grade of C or higher.



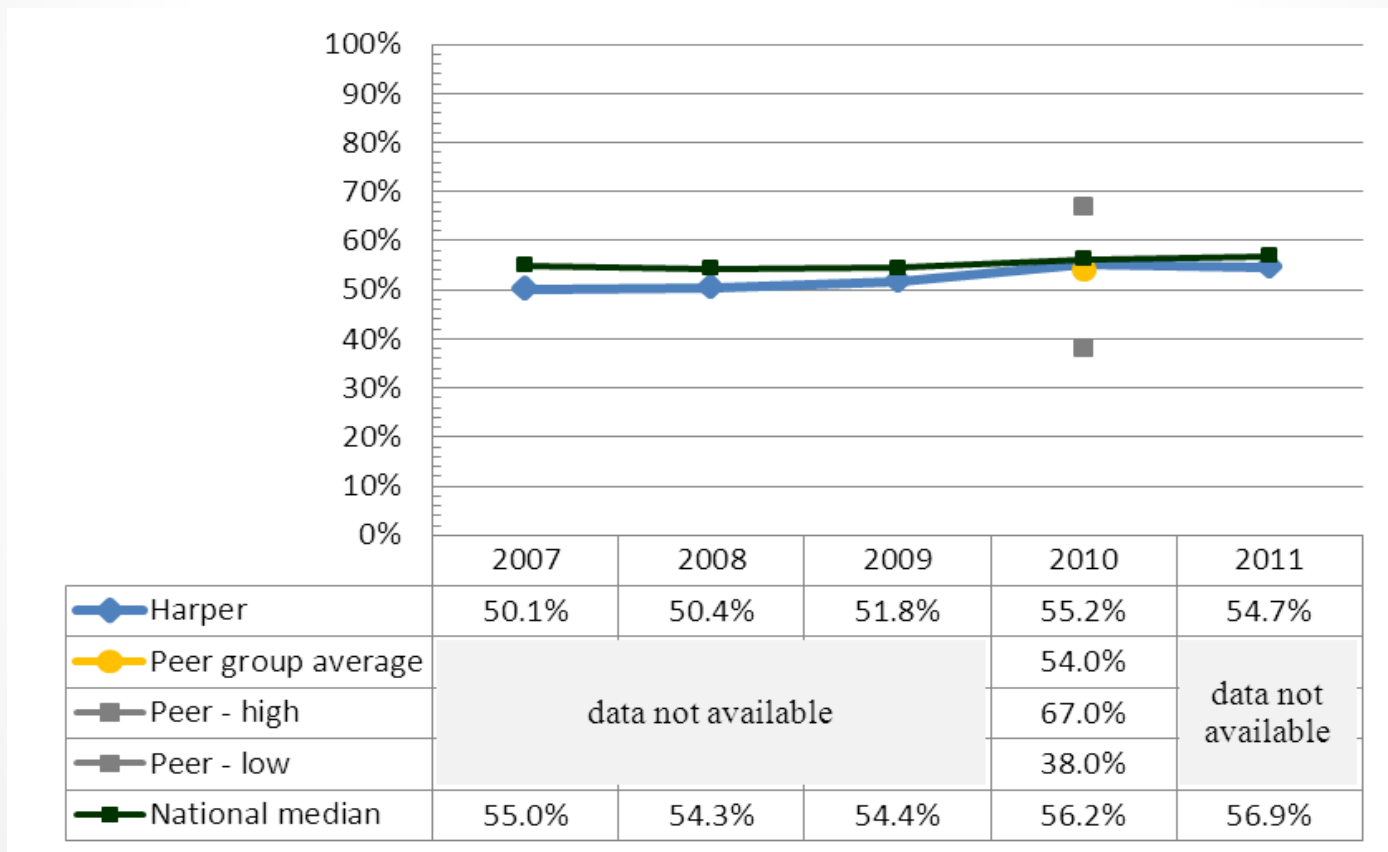
Developmental Reading Success Rate

Full definition: Students who were enrolled in developmental reading in first fall term and earned a grade of C or higher.



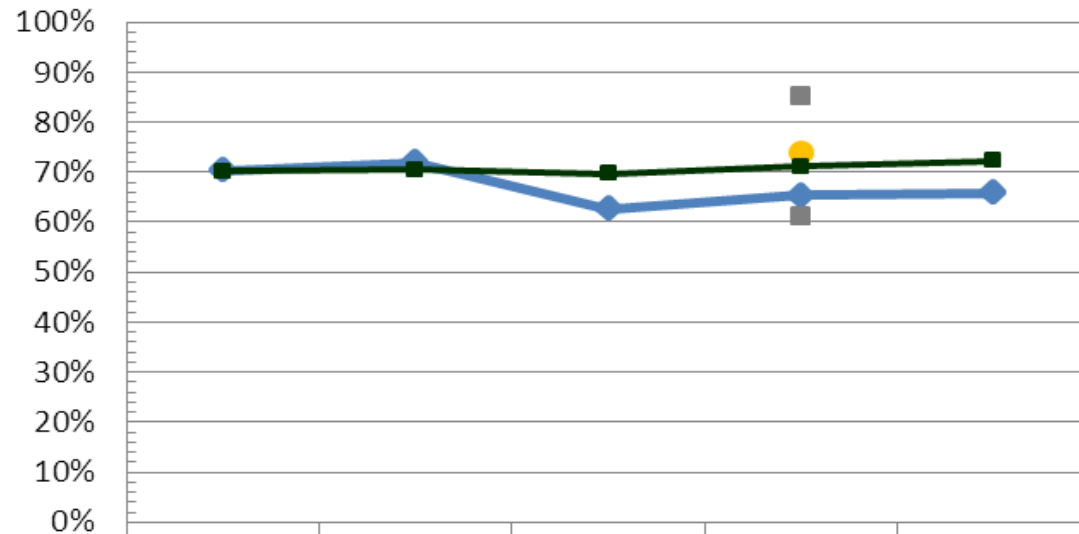
Developmental Math Success Rate

Full definition: Students who were enrolled in developmental math in first fall term and earned a grade of C or higher.



Success Rate of Developmental Students in ENG101

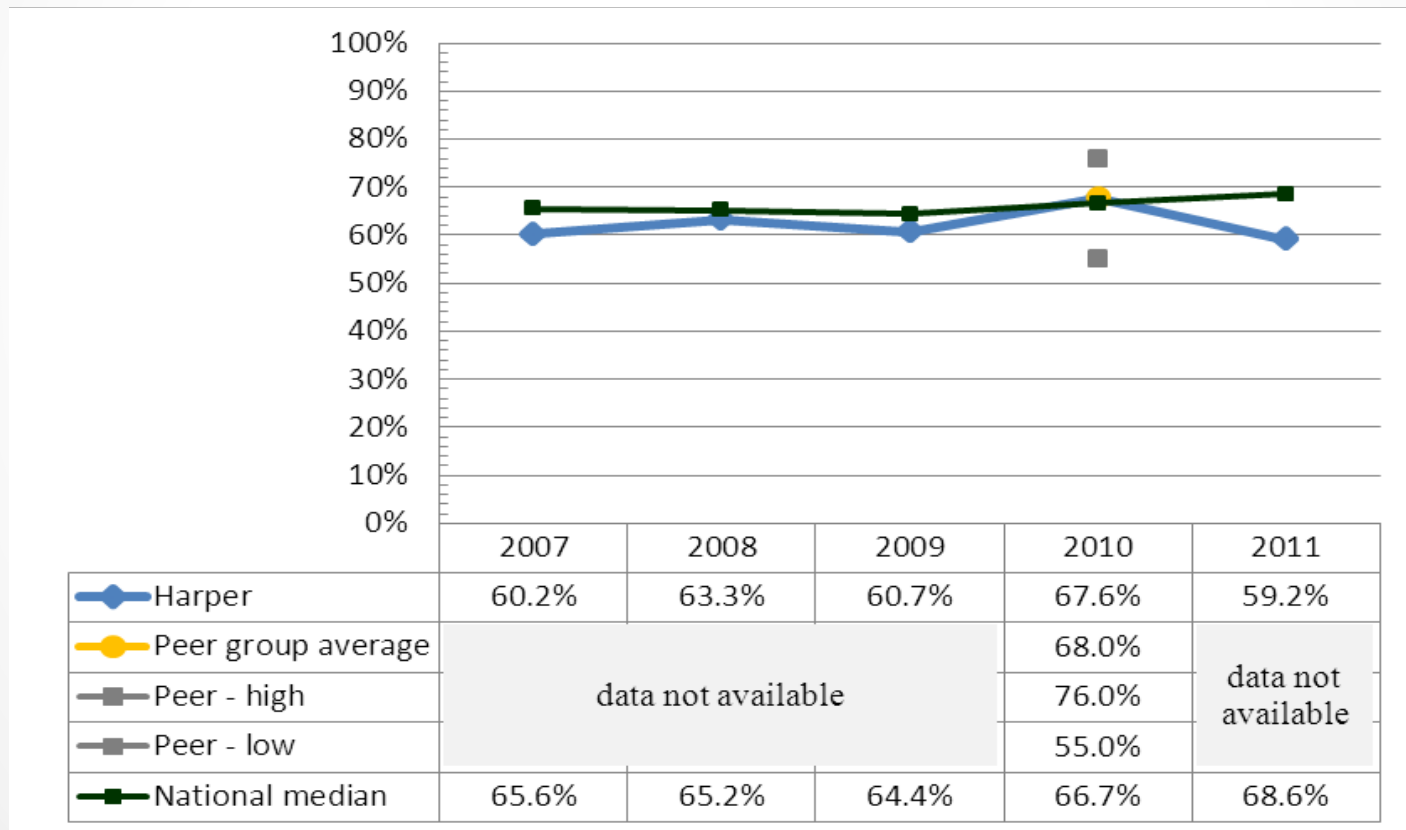
Full definition: Students who successfully completed developmental reading and/or English and subsequently successfully completed first college-level English course within one year.



	2007	2008	2009	2010	2011
Harper	70.3%	72.0%	62.6%	65.3%	65.9%
Peer group average	data not available			74.0%	data not available
Peer - high	data not available			85.0%	
Peer - low	data not available			61.0%	
National median	70.2%	70.4%	69.6%	71.2%	72.2%

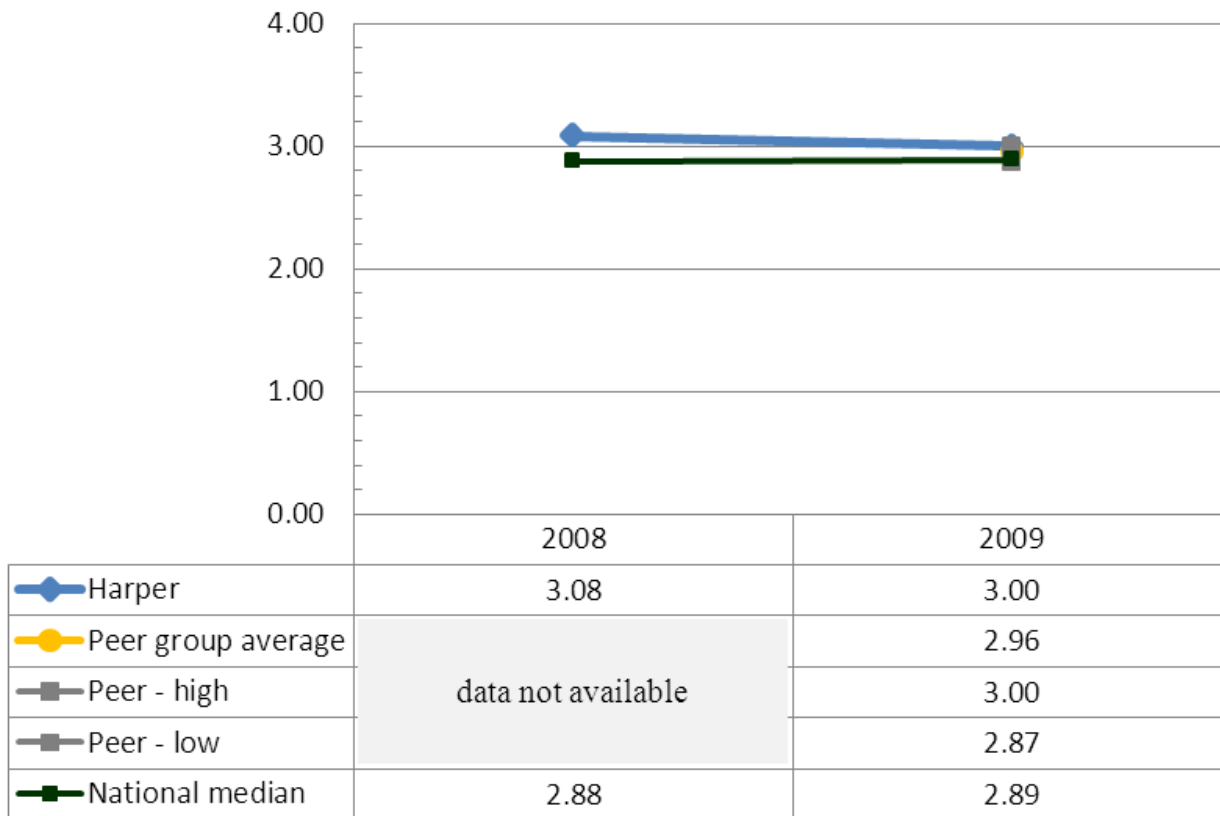
Success Rate of Developmental Students in College level Math

Full definition: Students who successfully completed developmental math and subsequently successfully completed first college-level math course within one year.



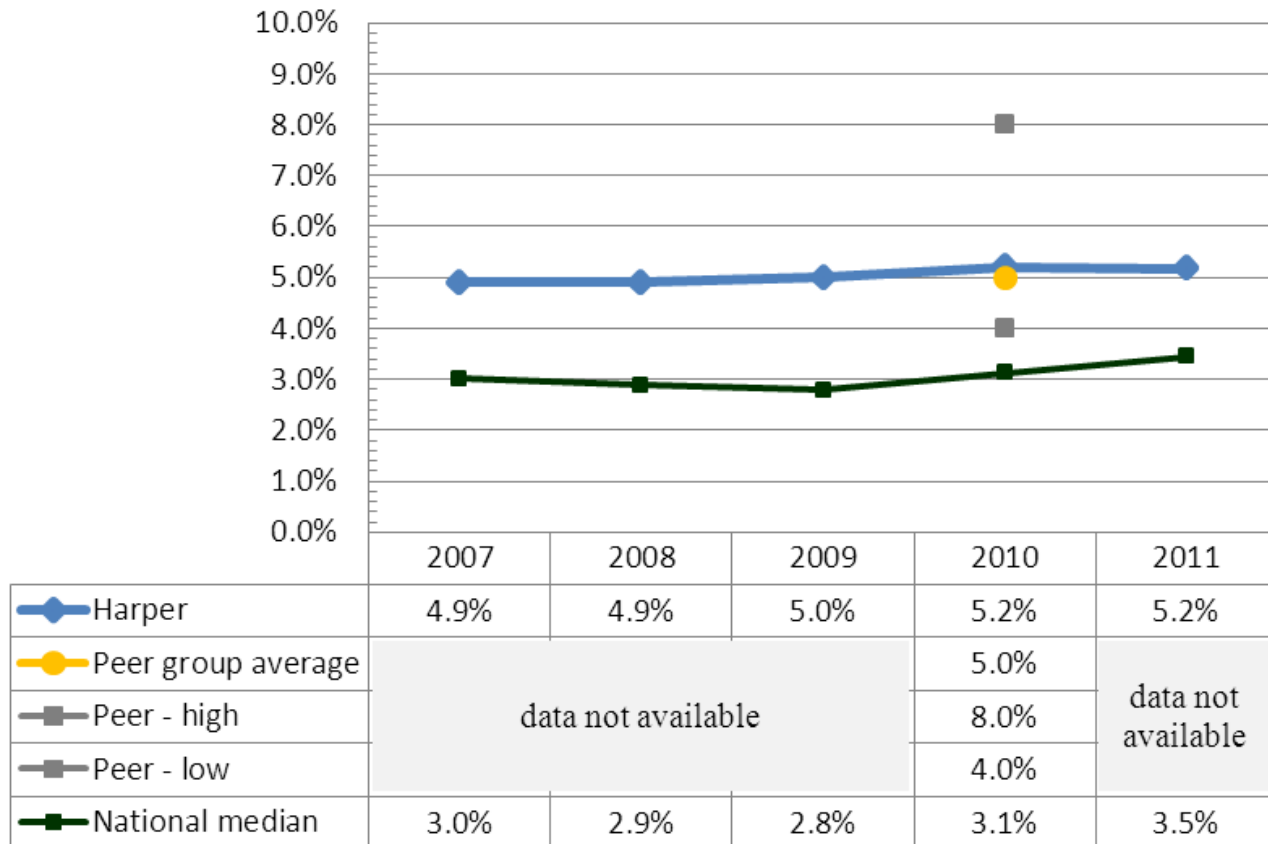
Transfer Cumulative Grade Point Average (GPA)

Full definition: Cumulative grade point average at end of first year after transferring.



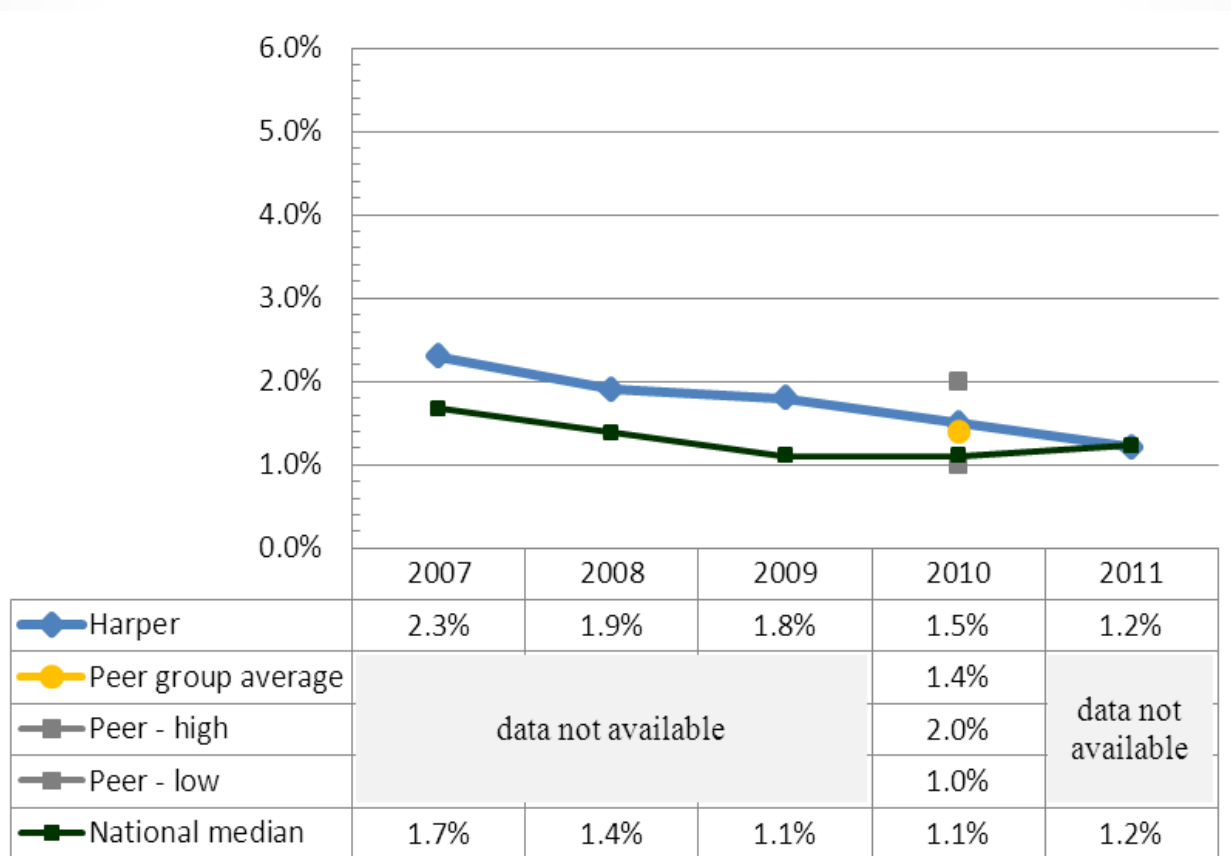
Market Penetration: Credit Students

Full definition: Unduplicated credit headcount enrollment in academic year divided by population of district.



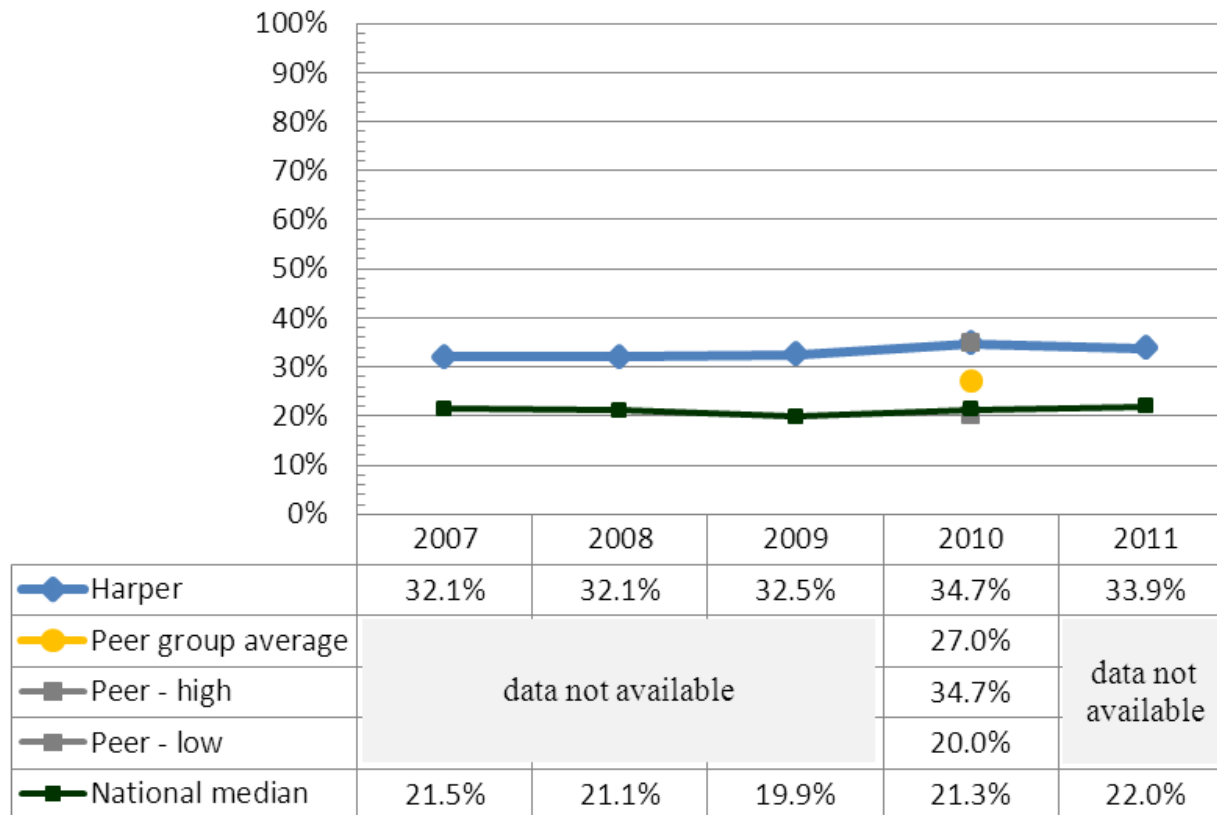
Market Penetration: Non-Credit Students

Full definition: Unduplicated non-credit headcount enrollment in academic year divided by population of district.



Market Penetration: Percentage Share of Public High School Graduates

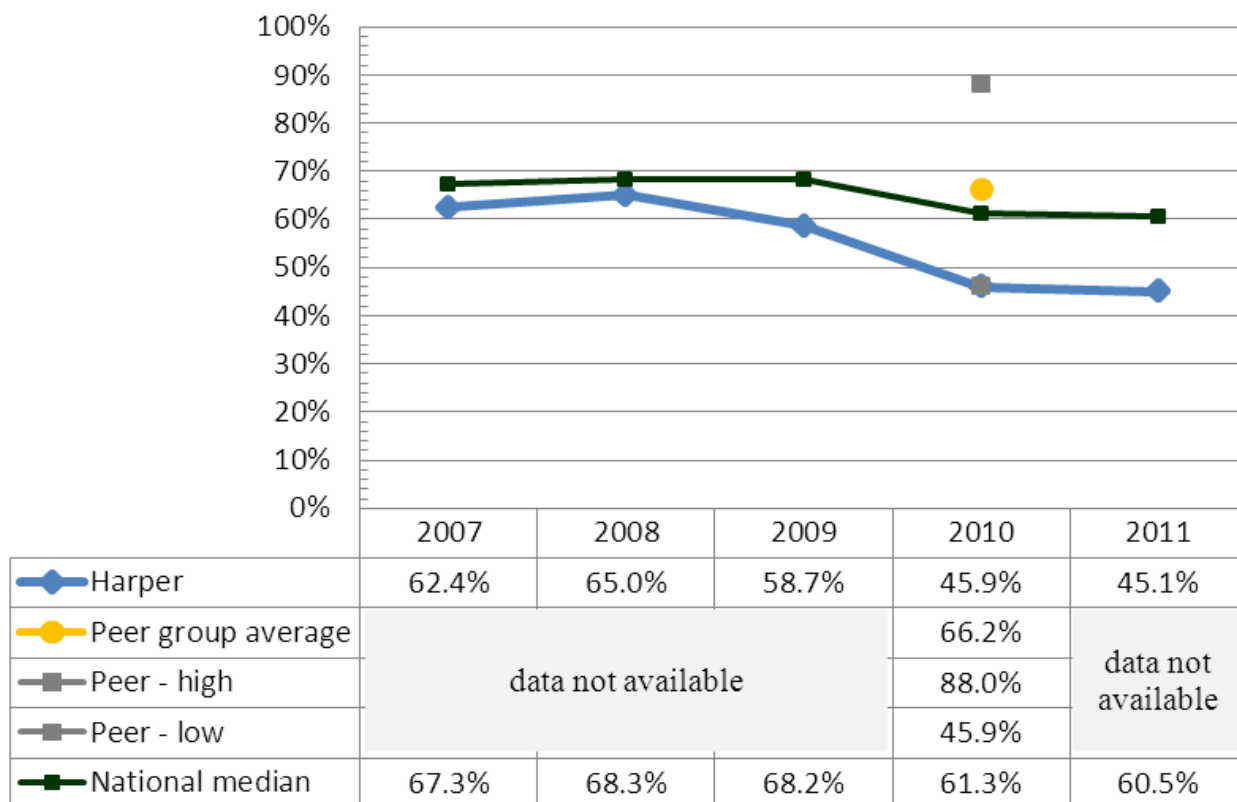
Full definition: Percent of total June high school graduates who enrolled at Harper in the fall semester of the same year as high school graduation.



Employment in Field Related to Harper Program of Study (Career Graduates)

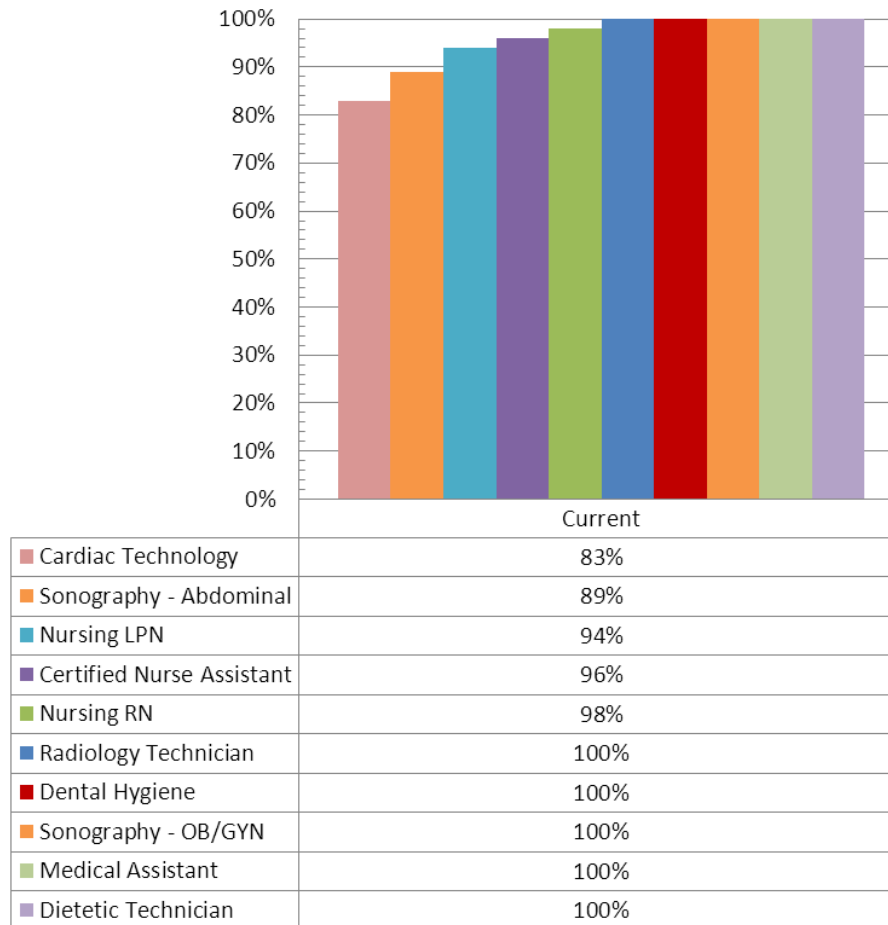
Full definition: Graduate survey item “How closely is your present job related to your former community college program?” (Related, Not related).

Percentage calculated on number of students responding “related” to this item, divided by the total number of students completing the survey.



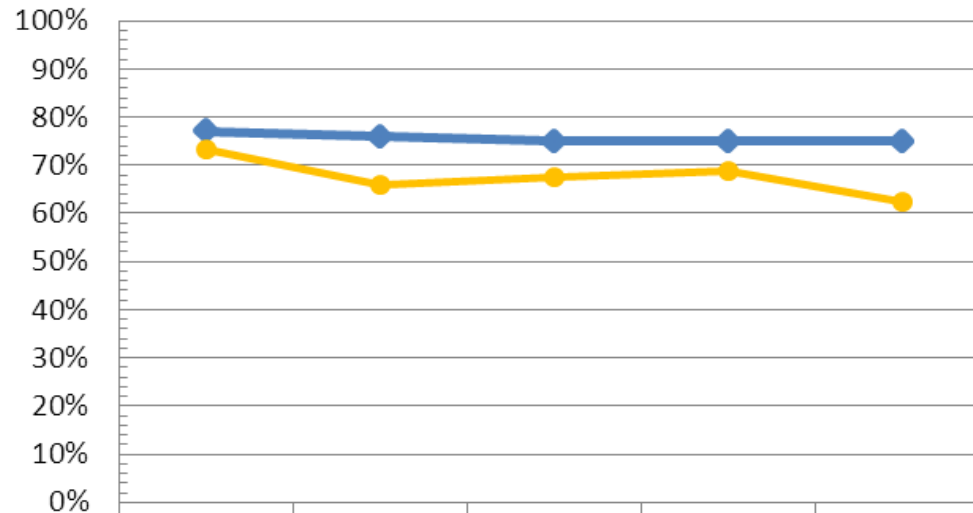
Licensure/Certification Pass Rate

Full definition: Percentage of Harper graduates from each discipline passing certification or licensing exams.



Net Asset Value Index

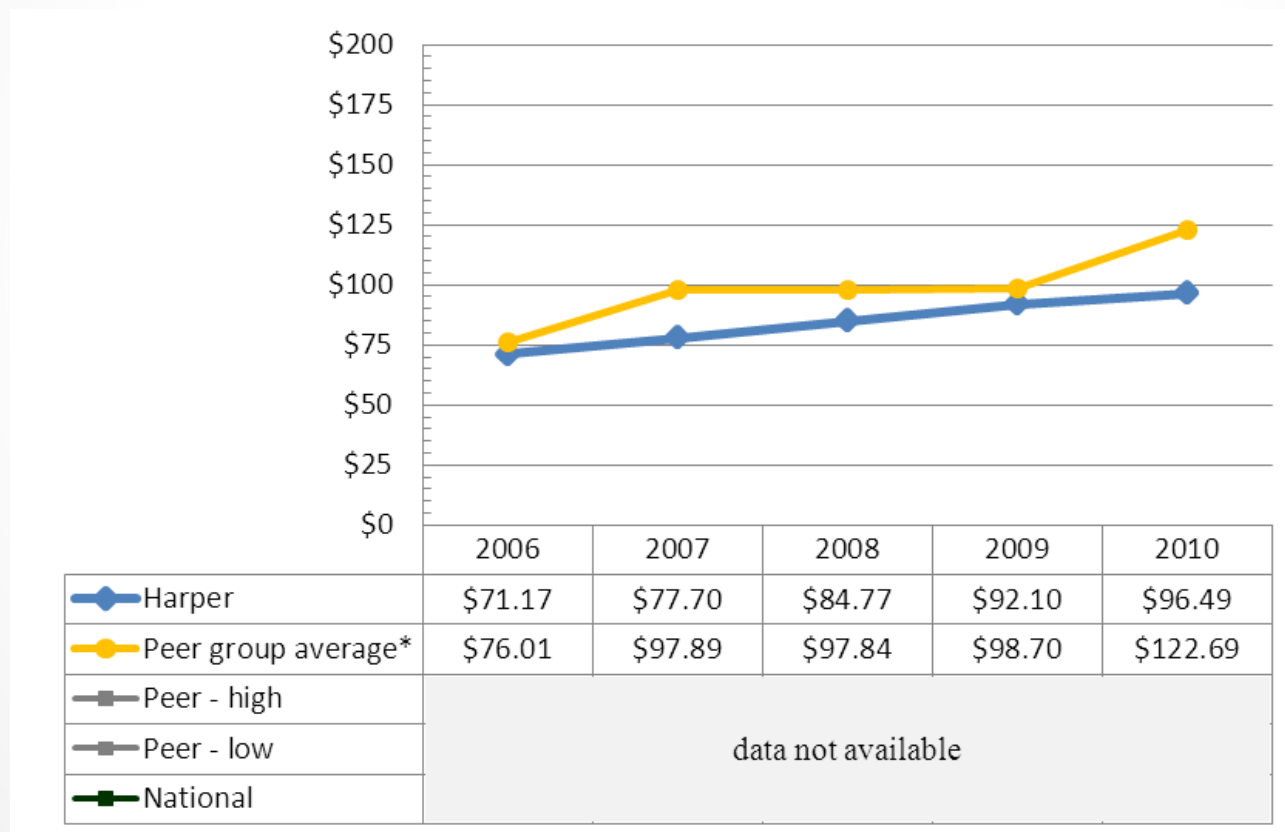
Full definition: Net asset value index is an annual statistic that represents the condition of the campus. Net asset value is expressed as a percentage and is calculated by subtracting the asset reinvestment backlog from the replacement value and dividing it by the replacement value. A net asset value of 100% is a building with no reinvestment backlog.



	2006	2007	2008	2009	2010
Harper	77.0%	76.0%	75.0%	75.0%	75.0%
Peer group average*	73.4%	65.8%	67.5%	68.8%	62.3%
Peer - high	data not available				
Peer - low					
National					

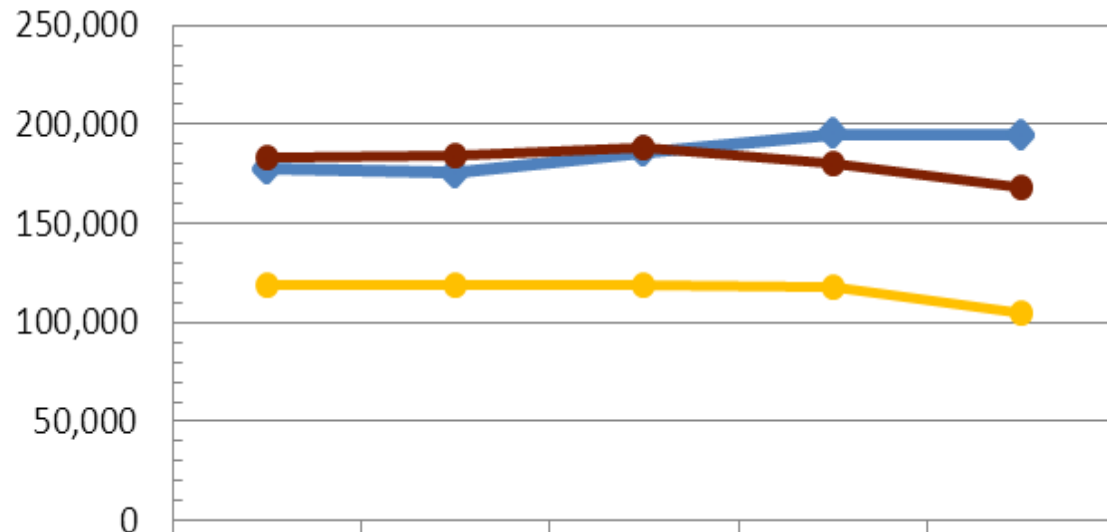
Total Asset Reinvestment Backlog

Full definition: Total asset reinvestment backlog is expressed in dollars per gross square foot (GSF); the reinvestment backlog is segmented into envelope/mechanical, space/program and infrastructure.



Energy Consumption

Full definition: Energy consumption is the energy consumed by fuel per gross square foot (GSF) of campus space.



	2006	2007	2008	2009	2010
Harper	177,678	175,502	186,098	194,809	194,744
Peer group 1 average *	118,969	118,956	118,811	117,399	104,600
Peer group 2 average **	183,668	184,283	188,717	180,423	167,684
National	data not available				

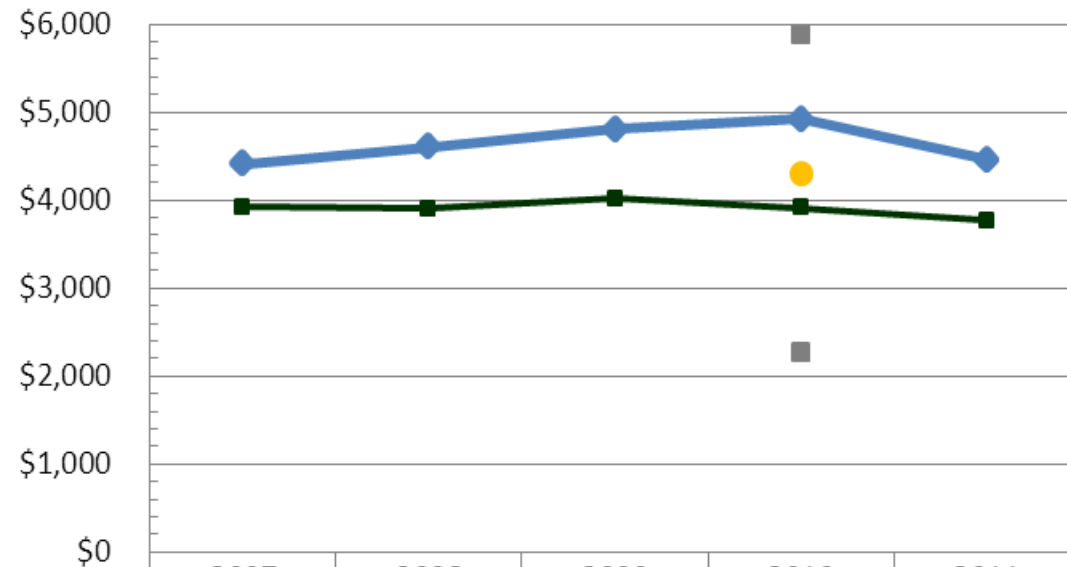
Cost Per Credit Hour

Full definition: Cost per credit hour is the total direct credit instructional expenditures divided by total number credit hours.



Cost Per Full-Time Equivalent (FTE) Student

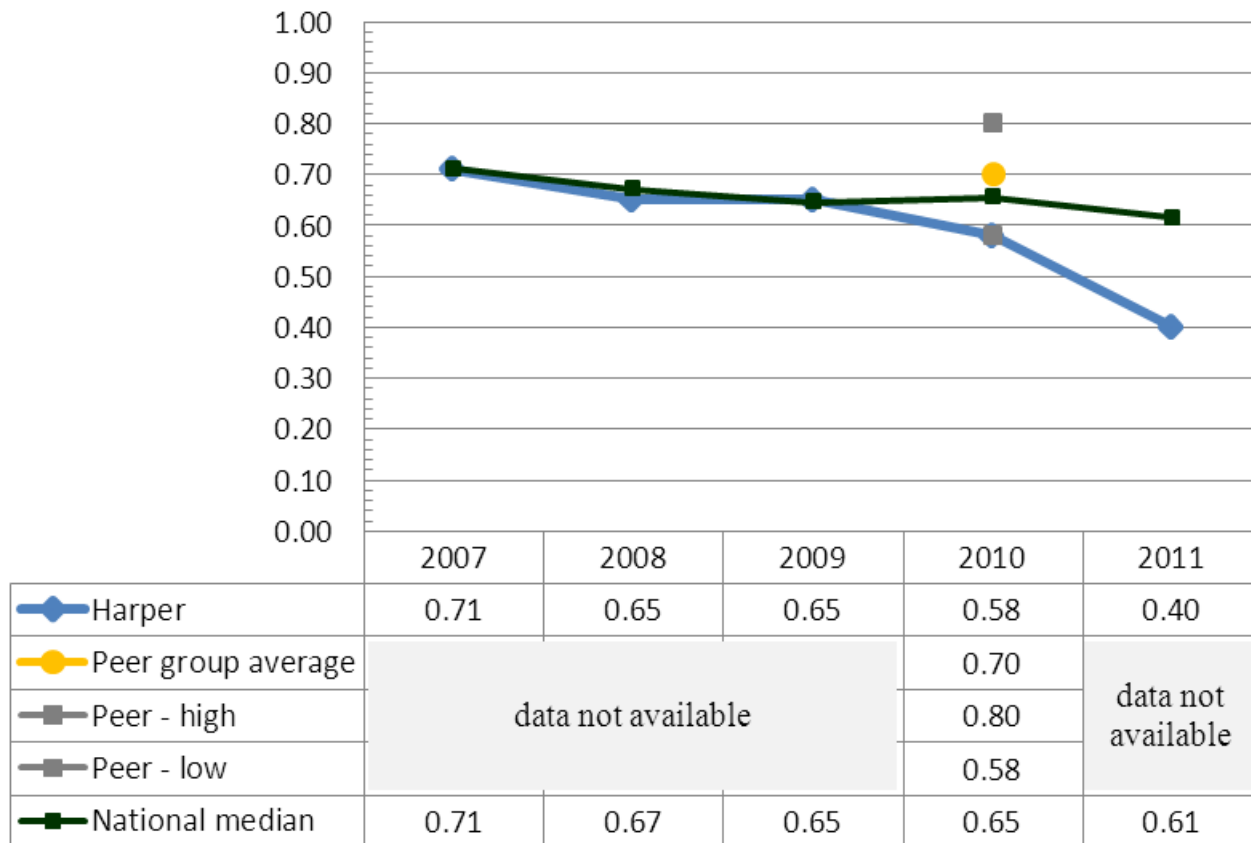
Full definition: Cost per FTE is the total direct credit instructional expenditures divided by student FTE.



	2007	2008	2009	2010	2011
Harper	\$4,412	\$4,603	\$4,809	\$4,923	\$4,458
Peer group average				\$4,305	
Peer - high				\$5,880	data not available
Peer - low				\$2,270	
National median	\$3,923	\$3,904	\$4,019	\$3,914	\$3,766

Employee Diversity

Full definition: Percentage of Harper minority employees divided by the percentage of district minority population.



Survey

Moving Forward

- IEMs serve to focus the institutions attention
- Adjustments to measures are possible with the development of national standards and the growing accountability movement
- Some measures will be monitored while others require focused improvement
- Harper College is a leader in this process

Next steps

- Review of input sessions and survey results
- Draft initial recommendation
- Campus-wide feedback of initial recommendation
- Recommendation reviewed and endorsed by governance
- Recommendation reviewed and endorsed by President
- Recommendation forwarded to the Board of Trustees for consideration

Questions?