



# NEW STUDENT FLOW UPDATE

- Maria S. Moten, Assistant Provost and Dean of Enrollment Services
- Robert Parzy, Director of Student Recruitment and Outreach
- Matt McLaughlin, Manager of Admissions and Testing Center
- Vicki Atkinson, Director of New Student Programs

Wednesday, August 15, 2012



# NEW STUDENT FLOW PRINCIPLES

- Encourage students to complete the enrollment process earlier and more efficiently
- Realign staff resources and streamline processes
- Ensure students know requirements to succeed
- Structure a student flow that positively influences choices students make about course/program selection
- Create experiences that maximize students' likelihood of completing a credential



# NEW STUDENT FLOW

## Recruitment and Outreach

Conducts an aggressive post-application communication sequence for part-time and full-time students.

Tracks and monitors student matriculation steps through registration and payment.

Systematically aligns staff and resources to reinforce the new student flow.



# NEW STUDENT FLOW

## Recruitment and Outreach

Conducts an aggressive post-application communication sequence for part-time and full-time students.

Tracks and monitors student matriculation steps through orientation.

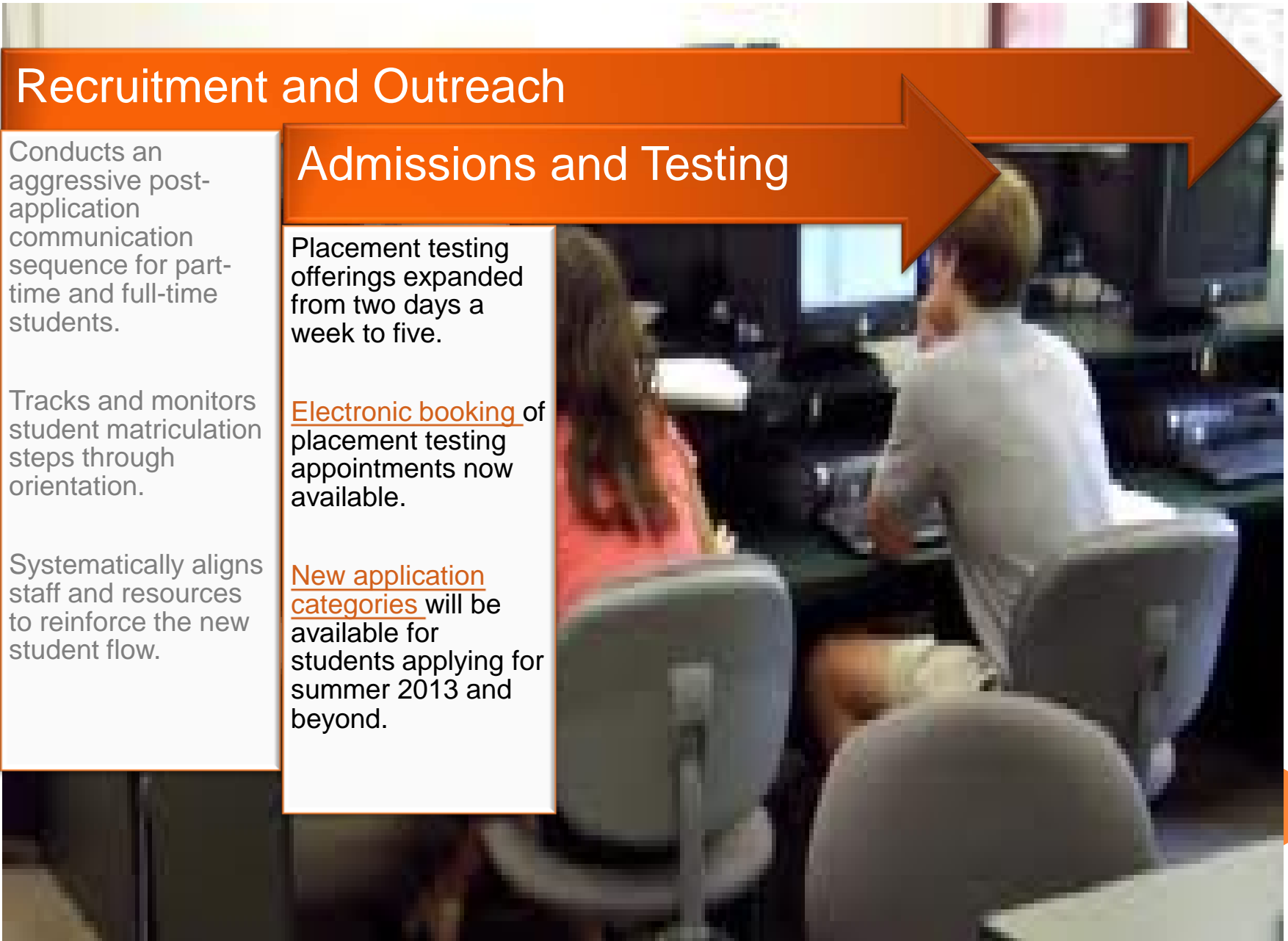
Systematically aligns staff and resources to reinforce the new student flow.

## Admissions and Testing

Placement testing offerings expanded from two days a week to five.

Electronic booking of placement testing appointments now available.

New application categories will be available for students applying for summer 2013 and beyond.





# NEW STUDENT FLOW

## Recruitment and Outreach

Conducts an aggressive post-application communication sequence for part-time and full-time students.

Tracks and monitors student matriculation steps through orientation.

Systematically aligns staff and resources to reinforce the new student flow.

## Admissions and Testing

Placement testing offerings expanded from two days a week to five.

Electronic booking of placement testing appointments now available.

New application categories will be available for students applying for summer 2013 and beyond.

## Orientation

### Streamlined invitation process

Improved advising and counseling protocols - emphasizing career and transfer planning.

"Hands-on" instruction in the Orientation Lab.

Incorporating the "Finish What You Start" completion theme --Orientation Leaders as peer educators.



# NEW STUDENT FLOW

## Recruitment and Outreach

Conducts an aggressive post-application communication sequence for part-time and full-time students.

Tracks and monitors student matriculation steps through orientation.

Systematically aligns staff and resources to reinforce the new student flow.

## Admissions and Testing

Placement testing offerings expanded from two days a week to five.

Electronic booking of placement testing appointments now available.

New application categories will be available for students applying for summer 2013 and beyond.

## Orientation

Streamlined invitation process

Improved advising and counseling protocols - emphasizing career and transfer planning.

"Hands-on" instruction in the Orientation Lab.

Incorporating the "Finish What You Start" completion theme -- Orientation Leaders as peer educators.

## Registration

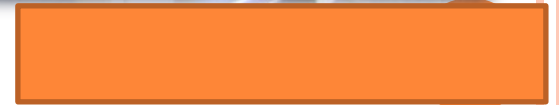
Verification and updating of student major/program of study and demographics information at time of registration.

Individualized assistance with registration and payment process.

New tracking mechanisms to support students through registration and beyond.

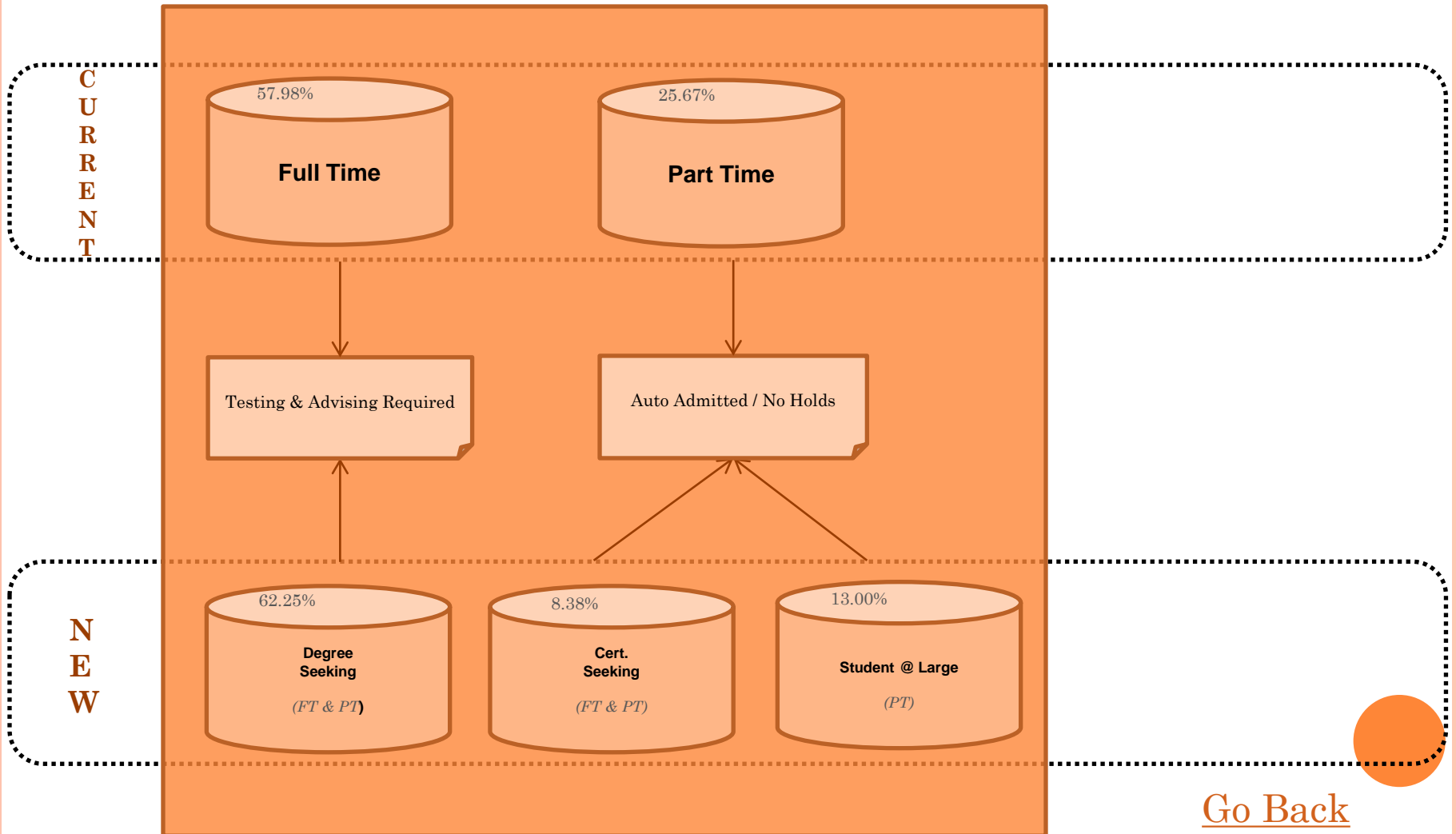


# QUESTIONS?



# HARPER COLLEGE APPLICATIONS

## Traditional





# TESTING CENTER – WHAT’S NEW?

The screenshot shows a website interface with a navigation bar at the top containing links: My Orientation, My Registration, My Courses, My Payments, My FinAid, My Advising, MyHarper Email, My Students, and Calendar. An orange arrow points to the 'My Orientation' link.

**Step 1**  
Always visible / available

**Follow These Steps**  
**Step 1: Take Your Placement Tests**

Placement Testing is now open to students who will be new at Harper and enrolling for the first time for Summer or Fall, 2012.

To schedule, verify or cancel your appointment to test:

[Compass Placement Testing](#)

- Your appointment for Placement Testing will last approximately two hours. Please keep that in mind when you select your appointment time.
- You will report to the Testing Center in Building A, Room 148 and must provide photo ID in order to test.

**Do you have questions about whether or not you are eligible for a waiver?** Please refer to the information to the right on this page under "Testing Center Information" to learn more about how ACT scores and prior college credit can be used to waive one or more tests.

**Step 2: Schedule, Verify or Cancel Your Appointment for Advising/Registration**  
**Congratulations!**

You are now eligible to schedule your appointment for Step 2:

[Advising/Registration](#)

- Your appointment for Advising/Registration will last approximately three hours. Please keep that in mind when you select your appointment time.

**Testing Center Information**

The Testing Center at Harper College... questions about the testing process... contact the Testing Center at 847.925.6266... Center is located in Building A, Room 148 (Cafeteria). We know you might have questions about Compass tests and how to prepare for them. Learn more:

- [Testing Center FAQs](#)
  - COMPASS Overview
  - Criteria for Waiving the Tests
  - Retest Policy
- [Compass Test Prep Resources](#)

**Already Tested or Waived and Still Needing Placement Tests?**

**How to Register for Courses**

**HOW TO REGISTER FOR CLASSES**

Register for classes at Harper is easy... During Advising/Registration, we'll walk you through the process and you'll be able to ask questions. If you are a Student Leader who are current Harper students, review the How to Register process? Review the How to Register process? simple it will be. The Registrar's Office will be a resource for you with any questions you might have after you've enrolled.

**Access and Disability Services**

The Access and Disability Services Office... Contact the ADS Office in Building D at 847.925.6266 (or Video Phone at 847.925.6266 for hard of hearing callers) to ensure that you have the accommodations you need.

[Go Back](#)

# TESTING CENTER – WHAT’S NEW?

**My Orientation** | My Registration | My Courses | My Payments | My FinAid | My Advising | MyHarper Email | My Students | Calendar

**Welcome to Orientation!**

If you have questions about this page and the instructions for setting up your appointment(s) for Step 1: Placement Testing or Step 2: Advising/Registration, contact the Admissions Outreach at 847.925.6700 or email at: [admissions@harpercollege.edu](mailto:admissions@harpercollege.edu).

**Who is required to attend Orientation? I'm a new part-time student, why was I told to visit this page?**

**Financial Aid Information**

**Financial Aid Next Steps?** Refer to the [MyFinAid](#) tab above for more information.

**How to Pay for Classes**

**Questions about payment plans and e-Cashier?** Refer to the [MyPayments](#) tab above for more information.

**Getting Your ID Card**

Part of the new student orientation process includes obtaining your official Harper College photo ID. The Box Office in Building J is your resource. We recommend that students obtain their Harper ID when they attend Step 2: Advising/Registration.

**For more information:**

[Student I.D. / HarperCard](#)  
Building J, Room J135  
Monday through Thursday: 8 a.m. to 7 p.m.  
Friday: 8 a.m. to 4:30 p.m.  
Phone: 847.925.6000, ext. CARD(2273)

**Getting Your Books and Supplies**

**Testing Center Information**

The Testing Center at Harper College has answers to your questions about the testing process. For more information, contact the Testing Center at 847.925.6266. The Testing Center is located in Building A, Room 148 (near the Cafeteria). We know you might have questions about Compass tests and how to prepare for them. Learn more:

- [Testing Center FAQs](#)
  - COMPASS Overview
  - Criteria for Waiving the Tests
  - Retest Policy
- [Compass Test Prep Resources](#)

**Already Tested or Waived and Still Needing to Register?**

**How to Register for Courses**

**HOW TO REGISTER FOR CLASSES**

Register for classes at Harper is easy. During Advising/Registration, we'll walk you through the process and you'll be able to ask questions from our Student Leaders who are current Harper students. How to Register process? Review the How to Register page. It's simple it will be. The Registrar's Office will be a resource for you with any questions you might have after you've enrolled.

**Access and Disability Services**

The Access and Disability Services Office provides support. Contact the ADS Office in Building D at 847.925.6266 (or Video Phone at 847.925.6266 for hard of hearing callers) to ensure that you have the accommodations you need.

**Follow These Steps**

**Step 1: Take Your Placement Tests**

Placement Testing is now open to students who will be new at Harper and enrolling for the first time for Summer or Fall, 2012.

To schedule, verify or cancel your appointment to test:

[Compass Placement Testing](#)

- Your appointment for Placement Testing will last approximately two hours. Please keep that in mind when you select your appointment time.
- You will report to the Testing Center in Building A, Room 148 and must provide photo ID in order to test.

**Do you have questions about whether or not you are eligible for a waiver?** Please refer to the information to the right on this page under "Testing Center Information" to learn more about how ACT scores and prior college credit can be used to waive one or more tests.

**Step 2: Schedule, Verify or Cancel Your Appointment for Advising/Registration**

**Congratulations!**

You are now eligible to schedule your appointment for Step 2:

[Advising/Registration](#)

- Your appointment for Advising/Registration will last approximately three hours. Please keep that in mind when you select your appointment time.

[Go Back](#)