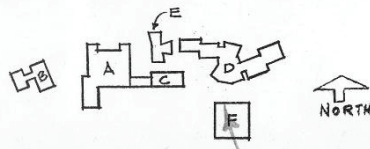
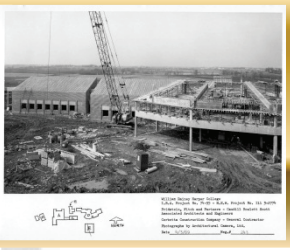


# Capital Projects Update



William Rainey Harper College  
I.B.A. Project No. 74-95 - H.E.W. Project No. Ill 3-2774  
Fridstein, Fitch and Partners - Caudill Rowlett Scott  
Associated Architects and Engineers  
Corbetta Construction Company - General Contractor  
Photographs by Architectural Camera, Ltd.  
Date 4/3/69 Neg.# 243

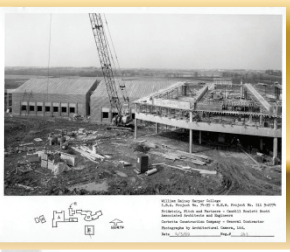
April 2013



# Capital Projects

## Master Plan: H Building Remodeling Project

- Recommendation to Award (RTA) completed.
- CDB issued letter of award to successful contractors.
- Groundbreaking scheduled for April 29, 10 a.m. , with Governor Quinn
- Construction to commence May 2013 (tentative)
- Anticipate completion December 2014 (tentative)
- Project currently under budget by \$3.96M (confirming with CDB)



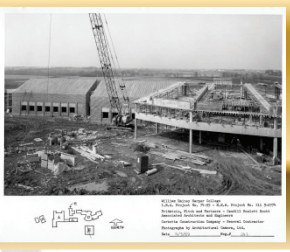
# Capital Projects

## Master Plan: D Building Renovations & Additions

- Construction documents 100% complete
- Bid package #1 awarded
- Bid package #2 submitted to Board of Trustees (April) for approval
- Bid package #3 to be submitted to Board of Trustees (May) for approval
- Phase I construction has started
- Anticipate completion Phase I – July 2014
- Anticipate completion Phase II – April 2016
- Project currently under budget by \$2.2M (excluding alternates)





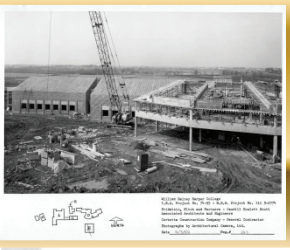


# Capital Projects

## **Master Plan: One Stop Admissions & Campus/Student Center**

- University of Minnesota “One Stop” tour April 26, 2013
- CDB has approved final A/E contract with Cannon Design
- CDB negotiating final CM contract with Mortenson Construction
- Schematic Design phase to start late-April
- Existing MEP systems under assessment





# Capital Projects

## **Master Plan – North Campus Roadway Improvements**

- Punch list items currently being completed (including final landscaping)

## **J Theatre “Bump Out”**

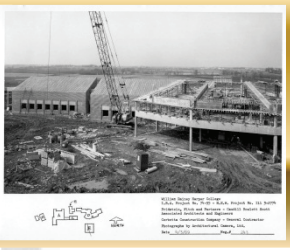
- Construction underway. To be completed late-Spring 2013

## **Parking Structure G3**

- Construction documents in progress
- Project scheduled to start in fall 2013 and be completed by August 2014

## **Campus Infrastructure Master Plan**

- Phase 1: Assessment of Existing Conditions complete
- Phase 2: Master Plan Review complete
- Phase 3: Implementation Plan in progress



# Capital Projects

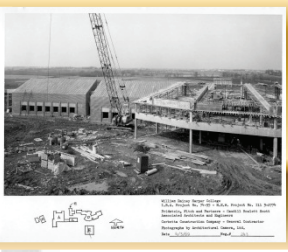
## Upcoming Projects

### **Euclid Avenue Entrance Relocation Project**

- Conceptual design under review with governing agencies
- Anticipated completion 2-3 years out

### **Building M Pool Repairs**

- Feasibility study complete and will be submitted to President's Cabinet in late-April for review



# Capital Projects

## Upcoming Projects

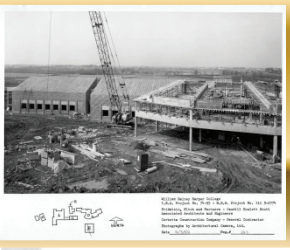
### Exterior Gathering Spaces

- Currently out to bid.
- Anticipate submitting to Board for approval in May
- Construction complete by fall 2013, pending approval

### Child Learning Center Playground

- Bids are received and on budget.
- Bids submitted to Board of Trustees (April) for approval
- Construction to be complete by end-June 2013





# Capital Projects

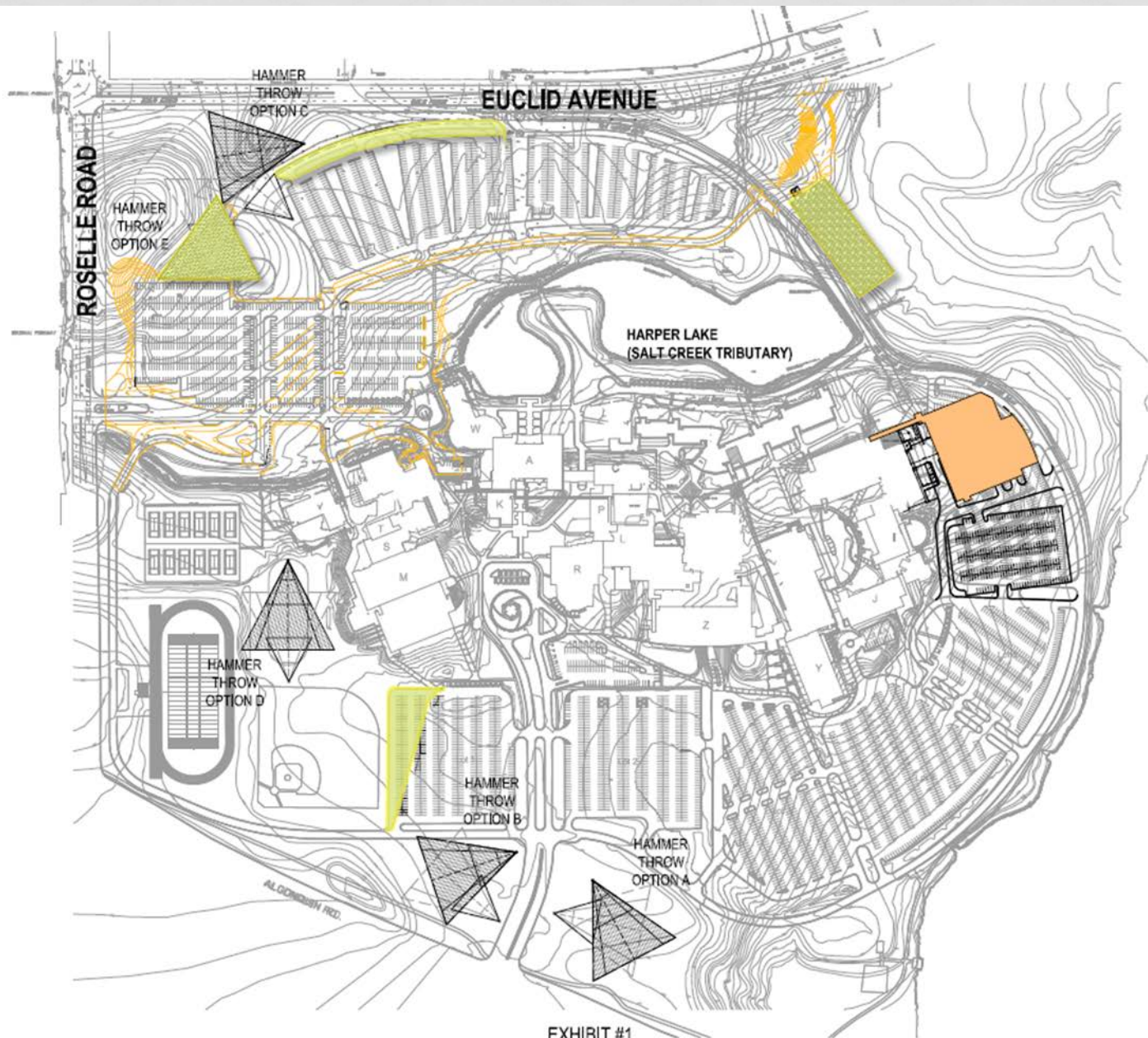
## Upcoming Projects

### **Buildings A, D and F Departmental Impact Study**

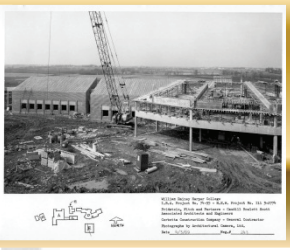
- Presentation at April Committee of the Whole
- Professional services recommendation submitted at Board (April 2013)
- Programming and Schematic Design phases to be completed by end-June 2013

### **Temporary Parking**

- Committee recommendation submitted to Executive Council
- Plan accommodates parking deficiencies related to east campus construction
- Anticipate submitting construction cost to Board for approval in June
- Construction to be completed by fall 2013 semester



HAMMER THROW & TEMPORARY PARKING  
STAGING OPTIONS



# Capital Projects

## Upcoming Projects

### **Advanced Manufacturing Lab (Temporary)**

- Reviewing location options
- Programming in progress

### **Advanced Manufacturing Lab (Permanent)**

- To be added to southeast corner of Building H, under separate contract (non-CDB)
- Professional services recommendation to be submitted at the May or June Board meeting
- Construction start dependent on completion of CDB work



