

# Harper College One Stop Admissions and Campus / Student Center

Committee of the Whole  
August 14, 2013

**CANNONDESIGN**

CDB Project No. 810-032-024  
Cannon Design Project No. 003900.01

# Schematic Design Phase Objectives

- Develop a direction for the location of additions.
- Arrange programmatic elements within new additions and renovated A building.
- Develop preliminary approach to building systems – structural, mechanical, electrical, plumbing, fire protection – and site strategies
- Check schematic level estimate against budget
- Obtain approval from President's Cabinet and Board of Trustees to proceed to Design Development Phase
- Present Schematic Design Deliverable to CDB

# THE CENTER

The Harper College One Stop Admissions and Campus/Student Center fosters social and intellectual connectivity among students, faculty and staff through its rich and diverse program offerings, campus services and events.

Reflecting the core values and high expectations of the college, with a focus on completion, the center will:

**PROVIDE AN INTUITIVE ONE STOP STUDENT EXPERIENCE.**

**ENABLE COHESIVE SUPPORT SERVICES FOR ACADEMIC AND CAREER ADVANCEMENT.**

**HARMONIOUSLY BLEND ACADEMIC, CULTURAL AND SOCIAL ENRICHMENT.**

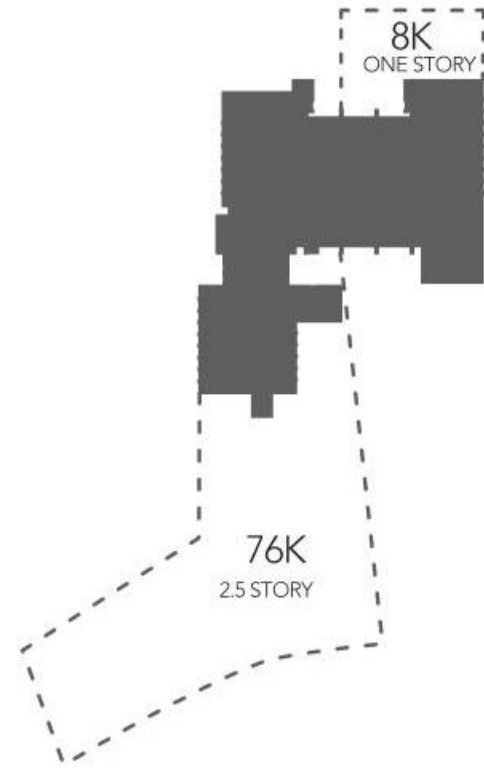
# SD #1 - Initial Planning Options

**A** AS COSTED IN PA PHASE, MODIFIED TO ACCOMMODATE IT STAFF IN K



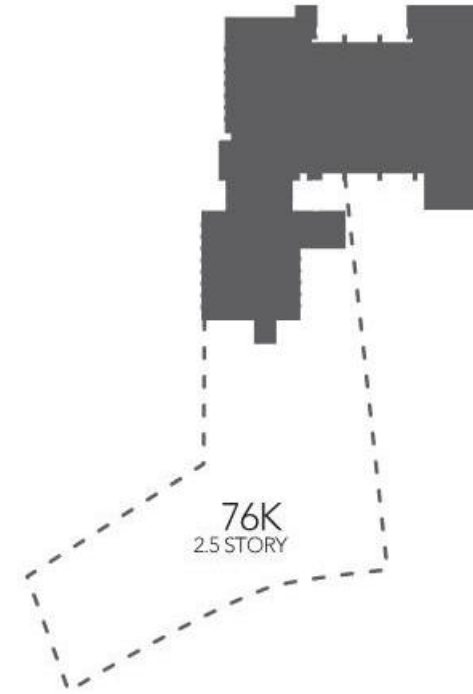
84,000 GSF ADDITION TOTAL

**B**



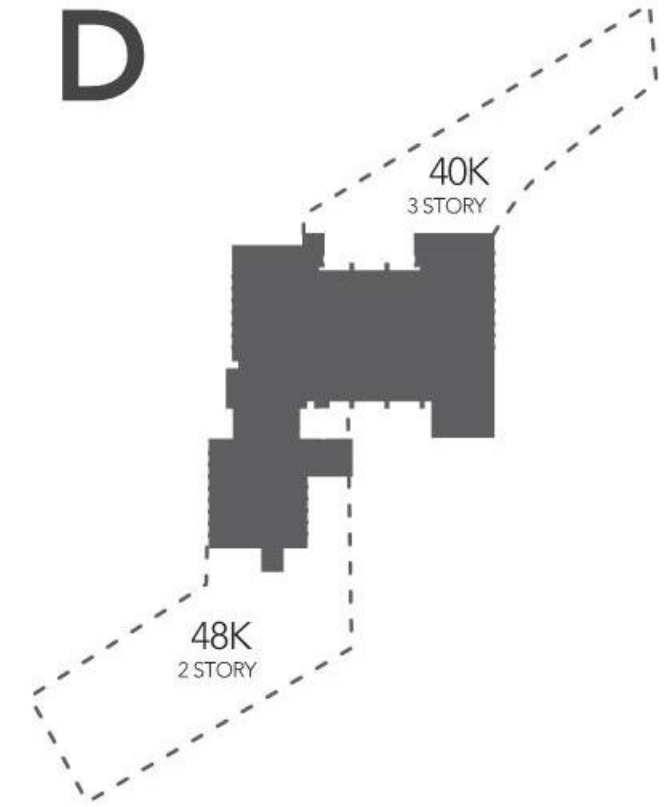
84,000 GSF ADDITION TOTAL

**C**



76,000 GSF ADDITION TOTAL

**D**



88,000 GSF ADDITION TOTAL

Selected Direction



# Recommended Schematic Design Direction





North Dr

Kris Howard Dr

Dick Kolze Ln

Lake Dr

Harper College

Harper College Dr

Harper College

Barbara Be...





North Dr

Kris Howard Dr

Lake Dr

Harper College

Dick Kolze Ln

Harper College Dr

Harper Colle

Barbara Ba





Bar

Harper College Dr

Harper College

Harper College

Lake Dr

Dick Kolze Ln

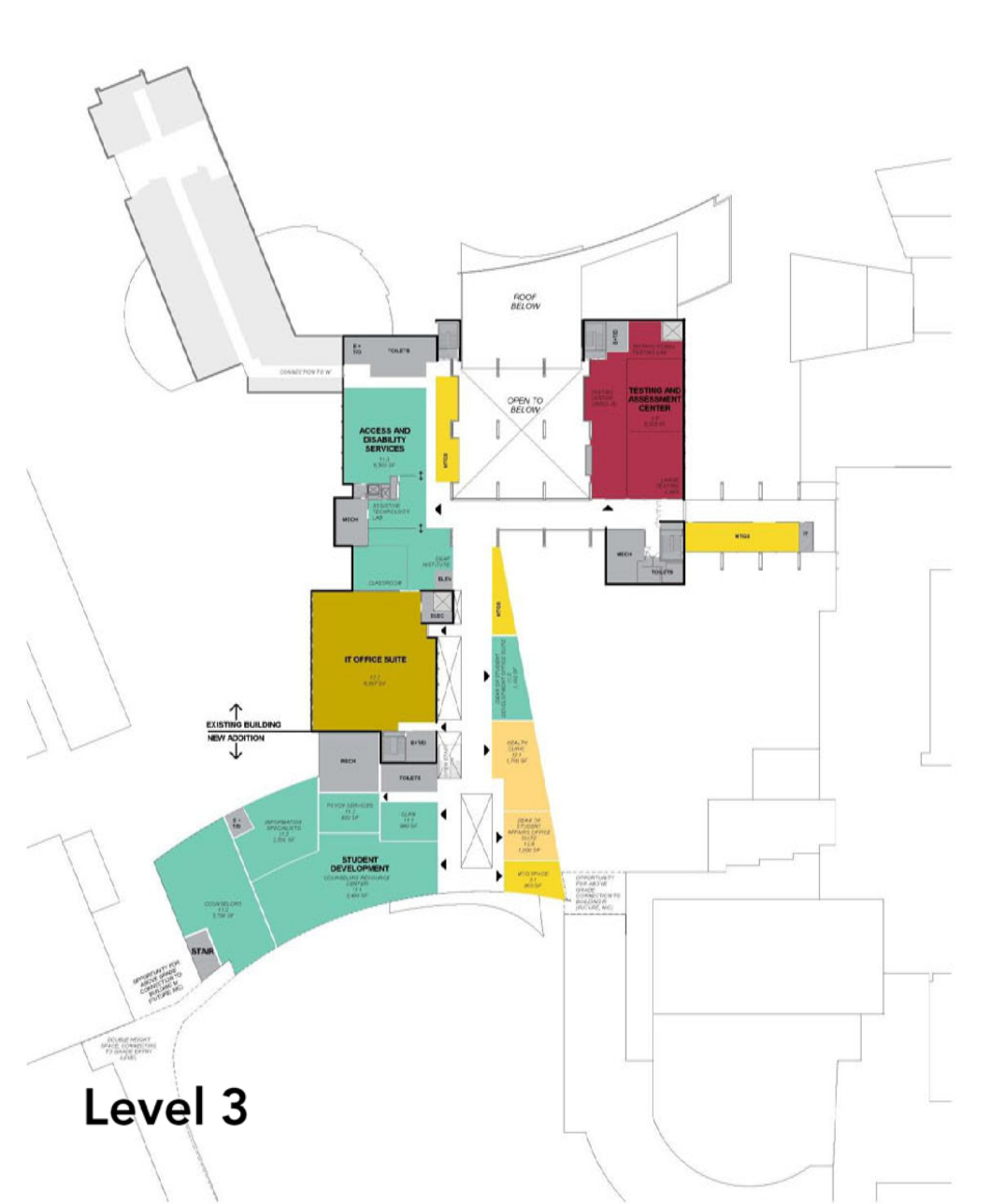
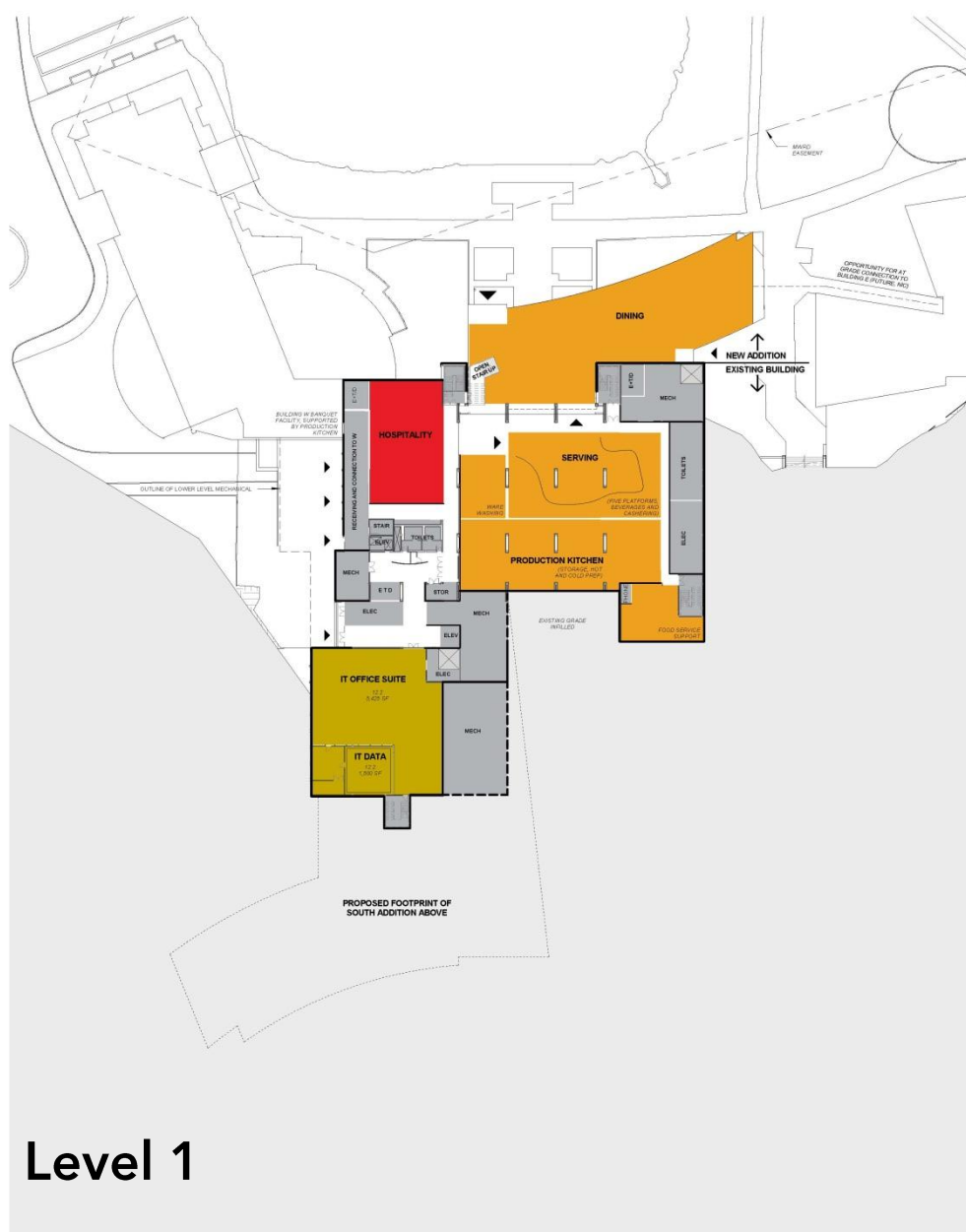
North Dr

Dr

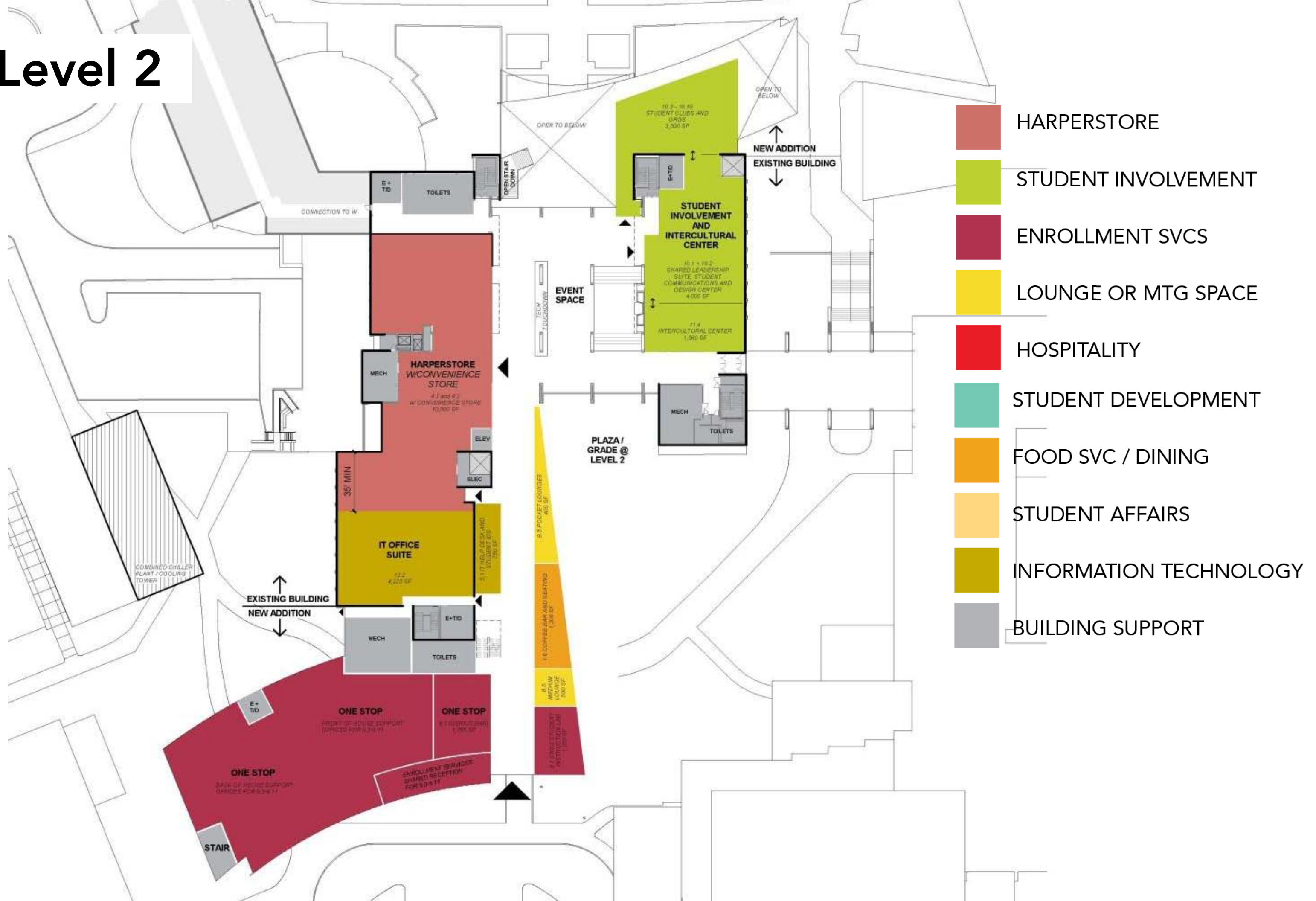


- HARPERSTORE
- STUDENT INVOLVEMENT
- ENROLLMENT SVCS
- LOUNGE OR MTG SPACE
- HOSPITALITY

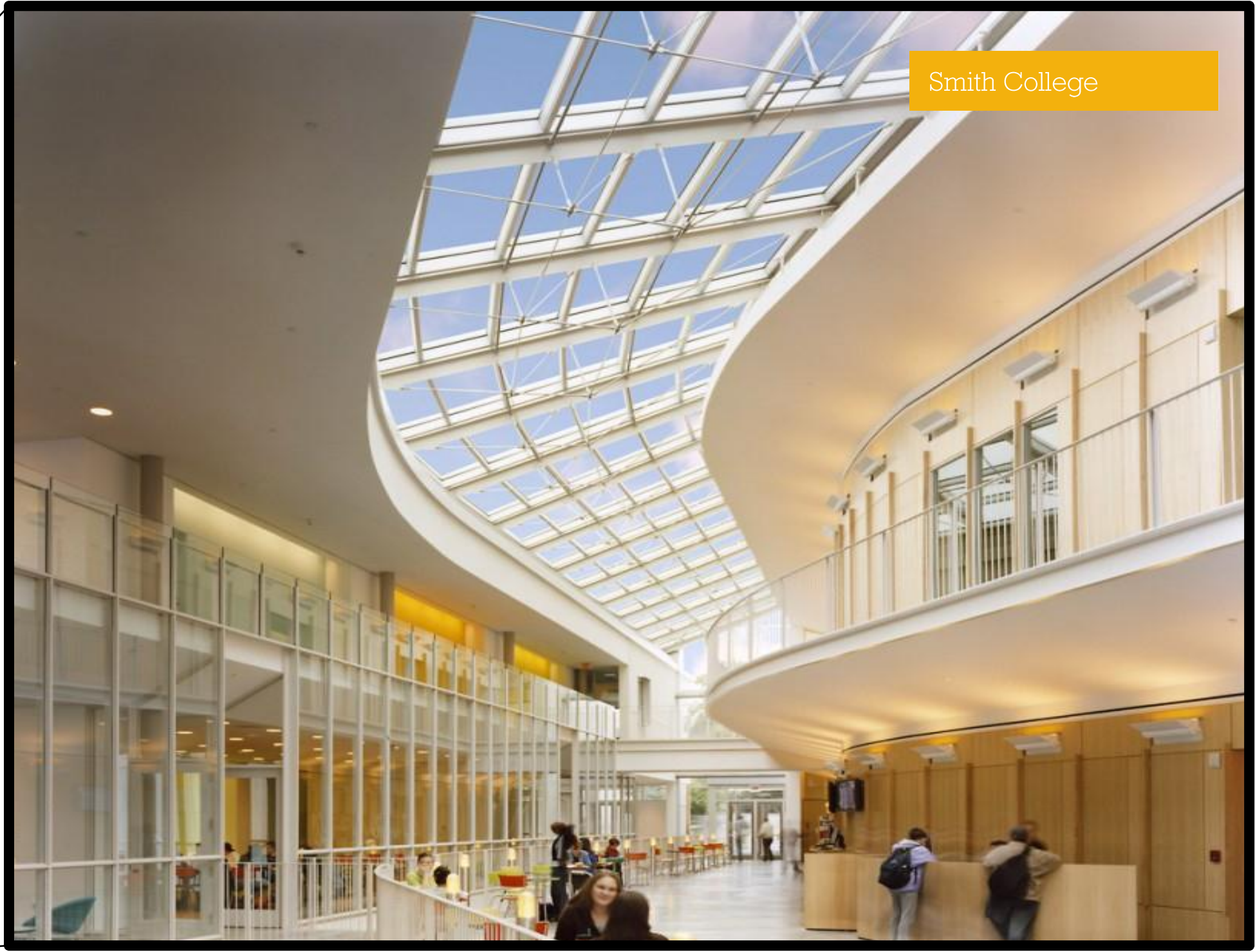
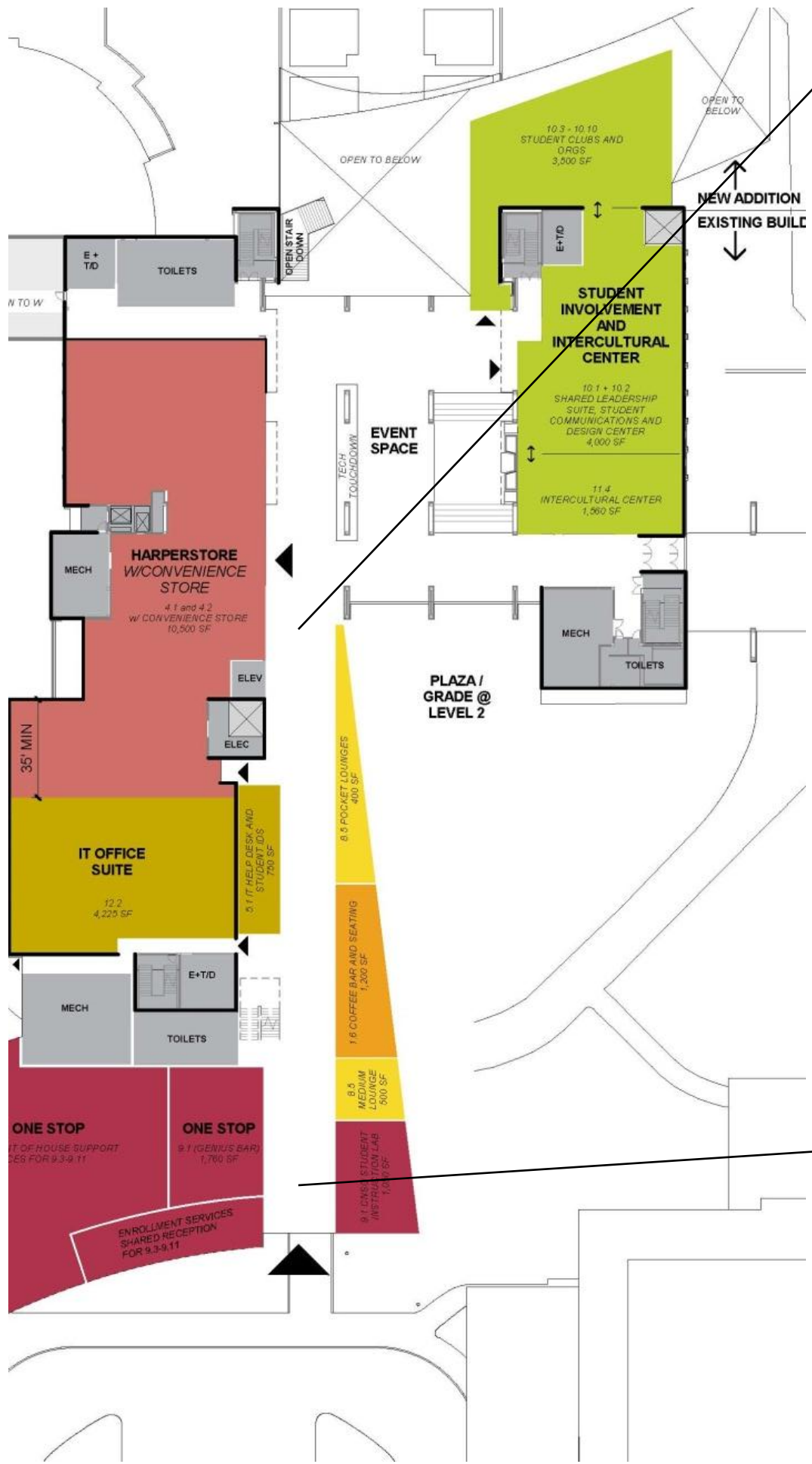
- STUDENT DEVELOPMENT
- FOOD SVC / DINING
- STUDENT AFFAIRS
- INFORMATION TECHNOLOGY
- BUILDING SUPPORT



# Level 2

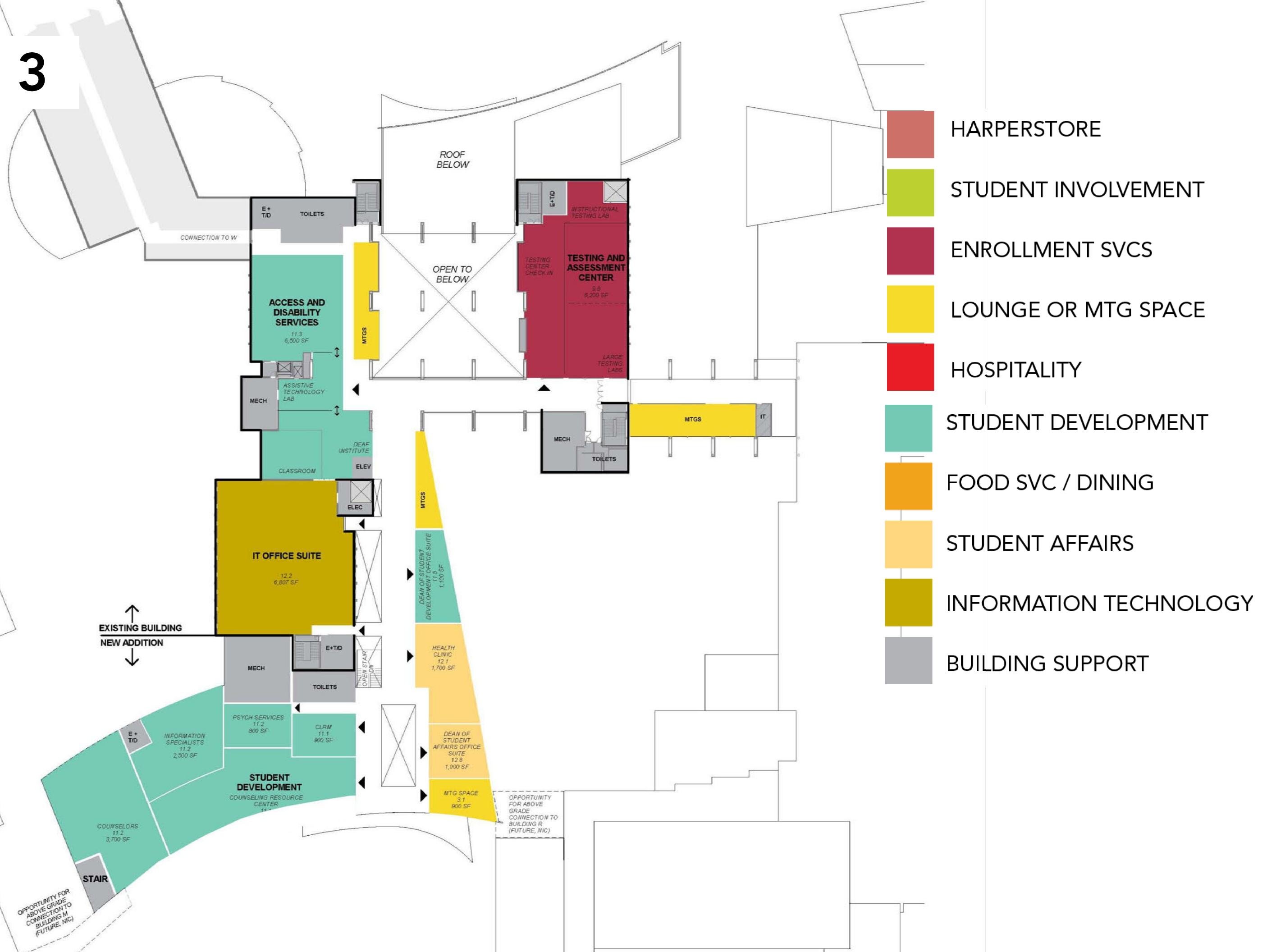




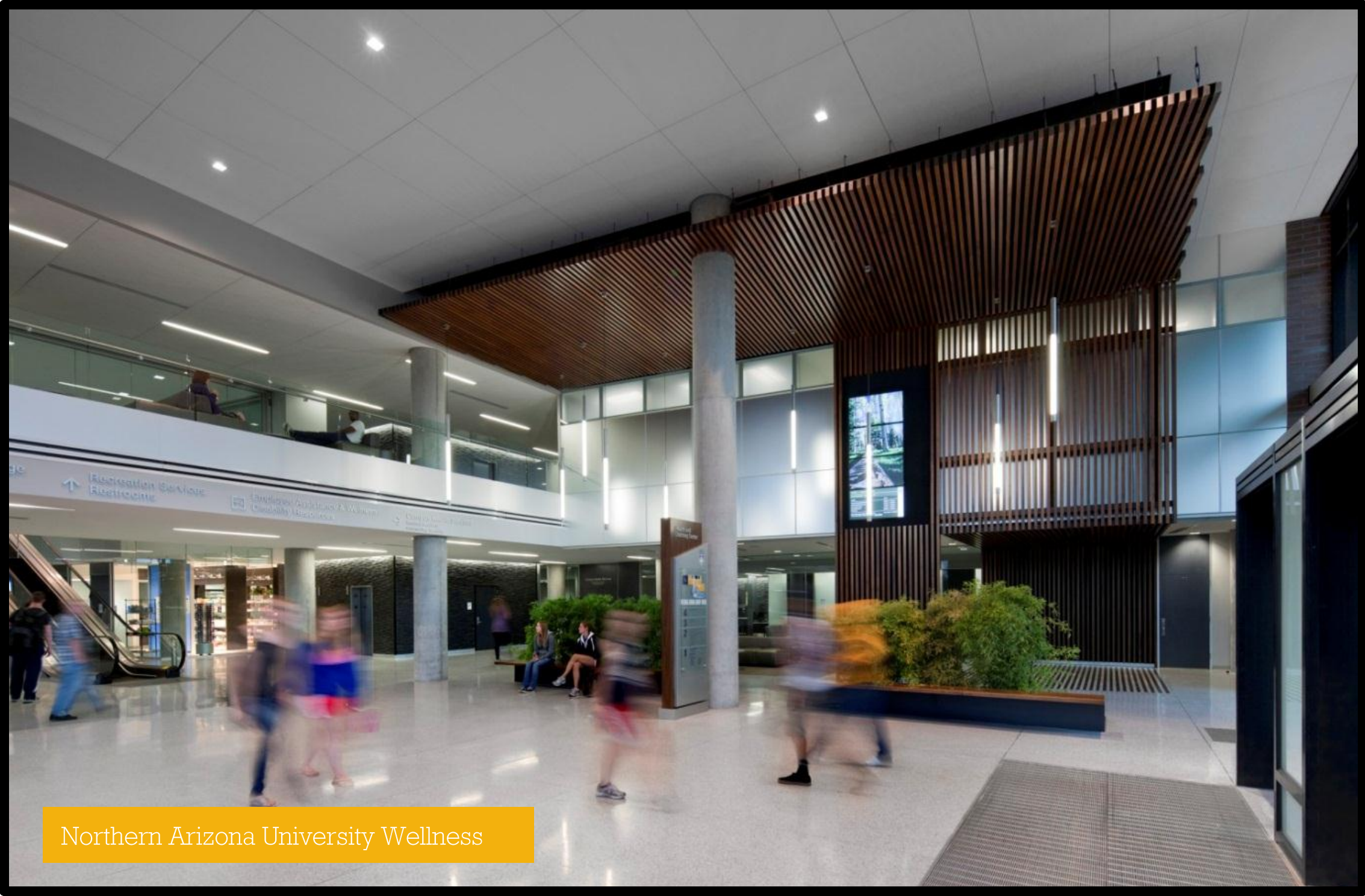


Smith College

# Level 3





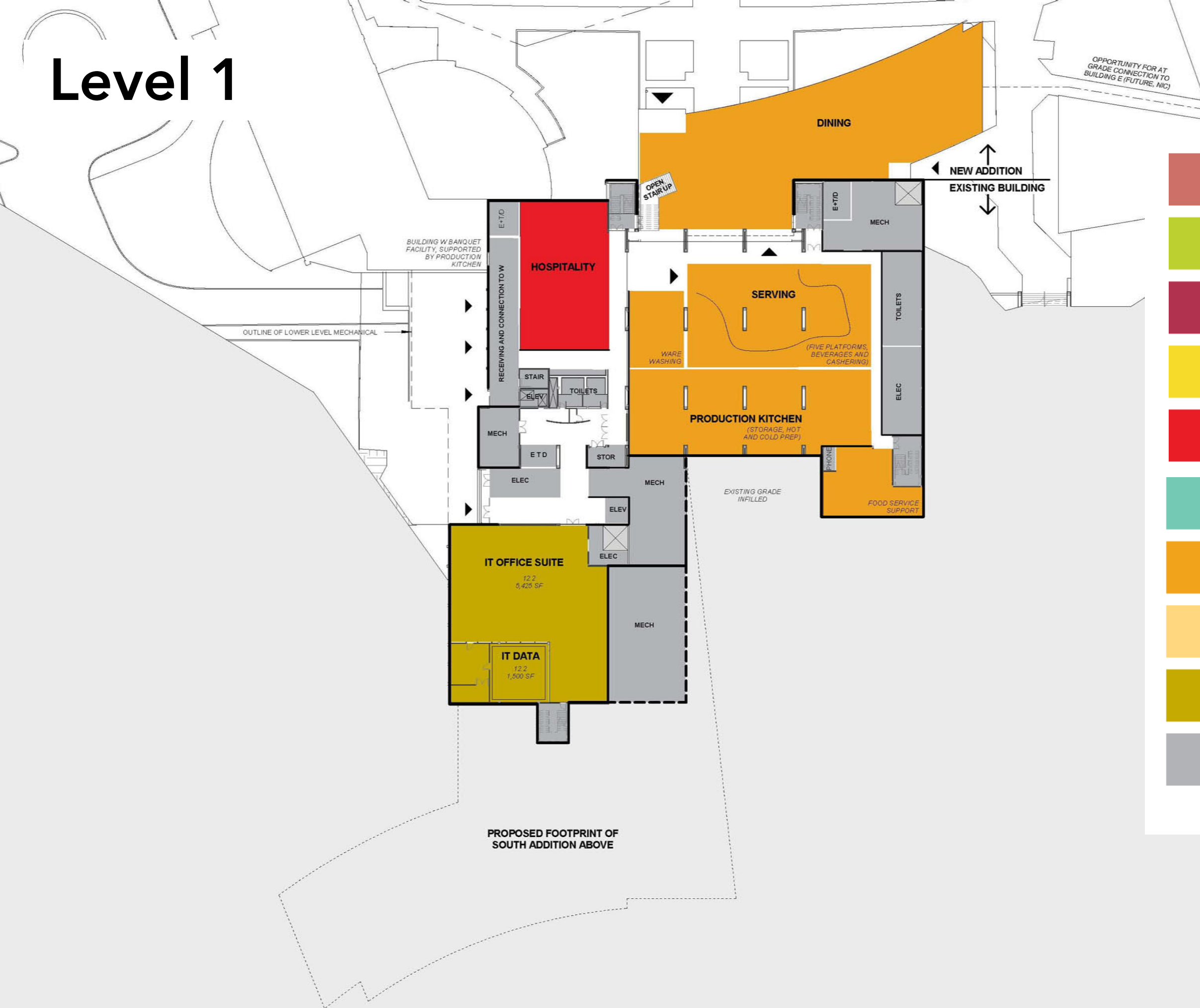


Northern Arizona University Wellness



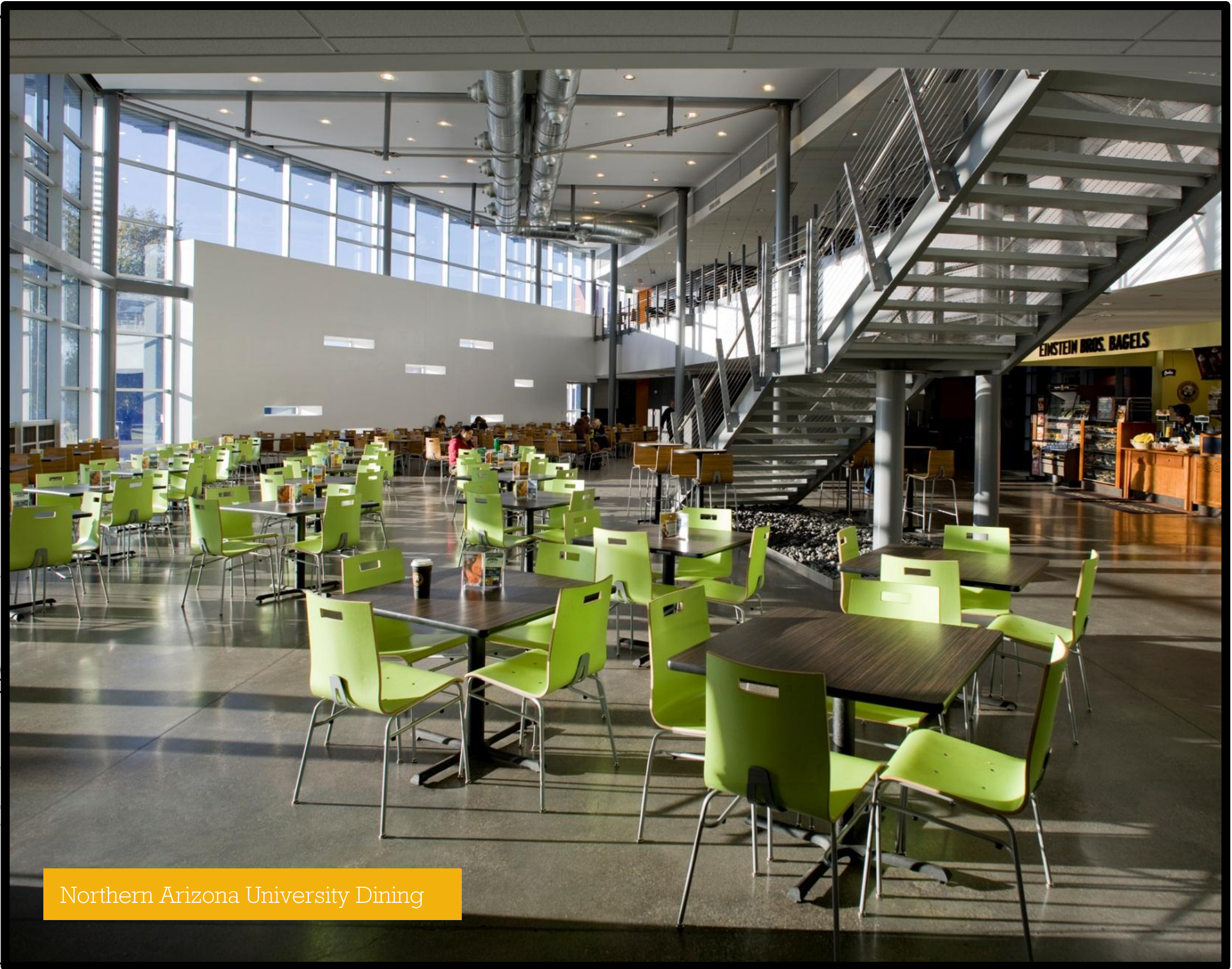
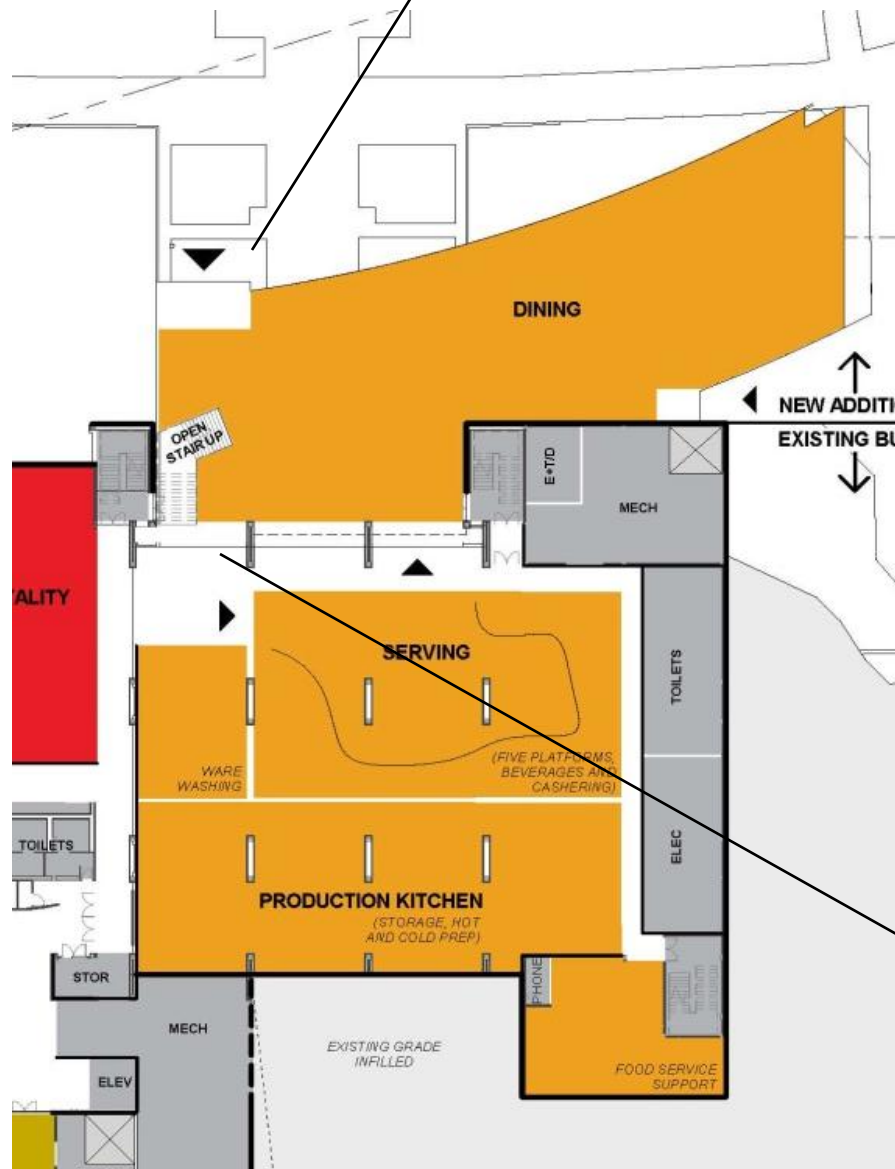


# Level 1



- HARPERSTORE
- STUDENT INVOLVEMENT
- ENROLLMENT SVCS
- LOUNGE OR MTG SPACE
- HOSPITALITY
- STUDENT DEVELOPMENT
- FOOD SVC / DINING
- STUDENT AFFAIRS
- INFORMATION TECHNOLOGY
- BUILDING SUPPORT





Northern Arizona University Dining



# Progress: Studies for Design Development





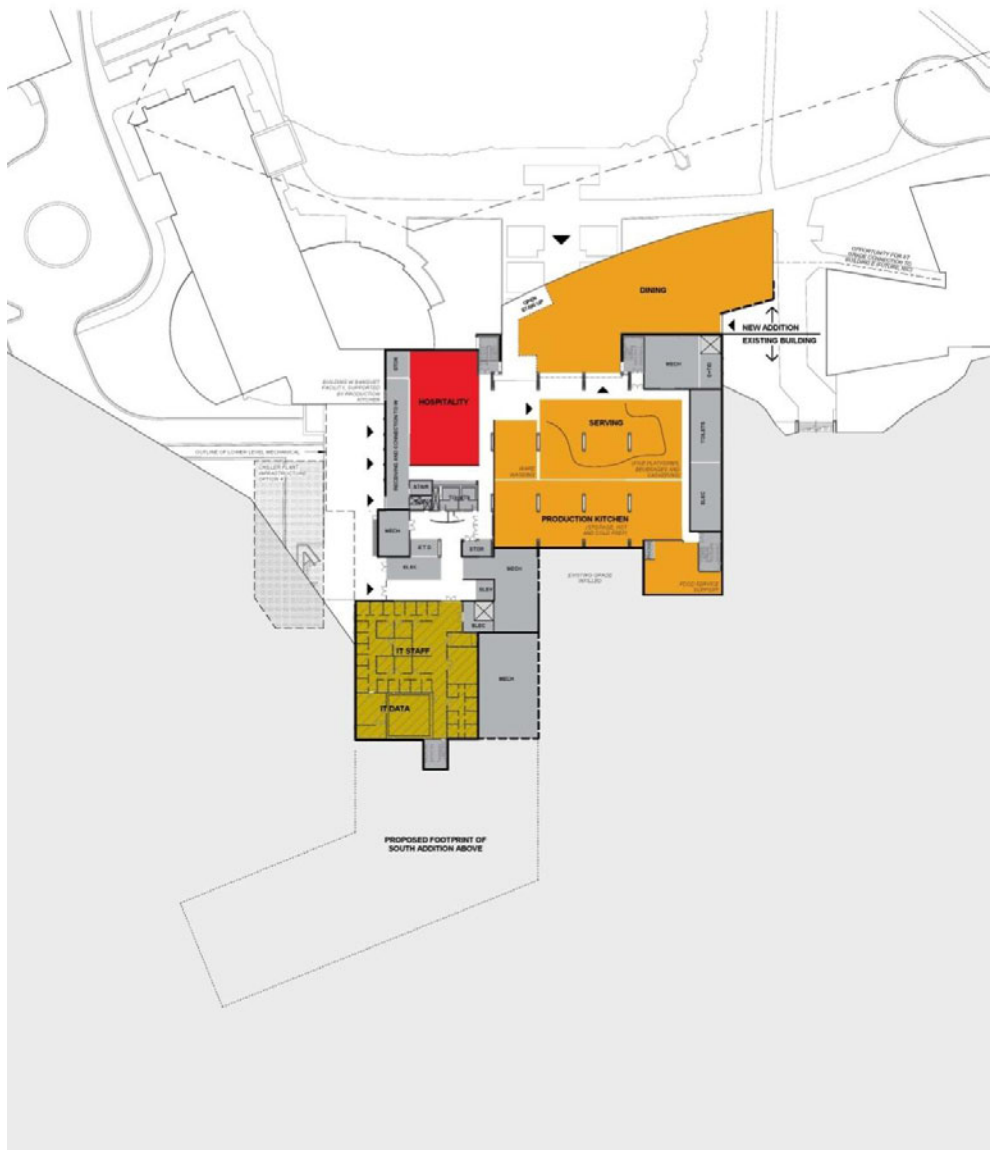
# Next Steps

- Approval to Proceed from Board of Trustees  
*August 21, 2013*
- Submission to CDB  
*Following Harper College Approval*

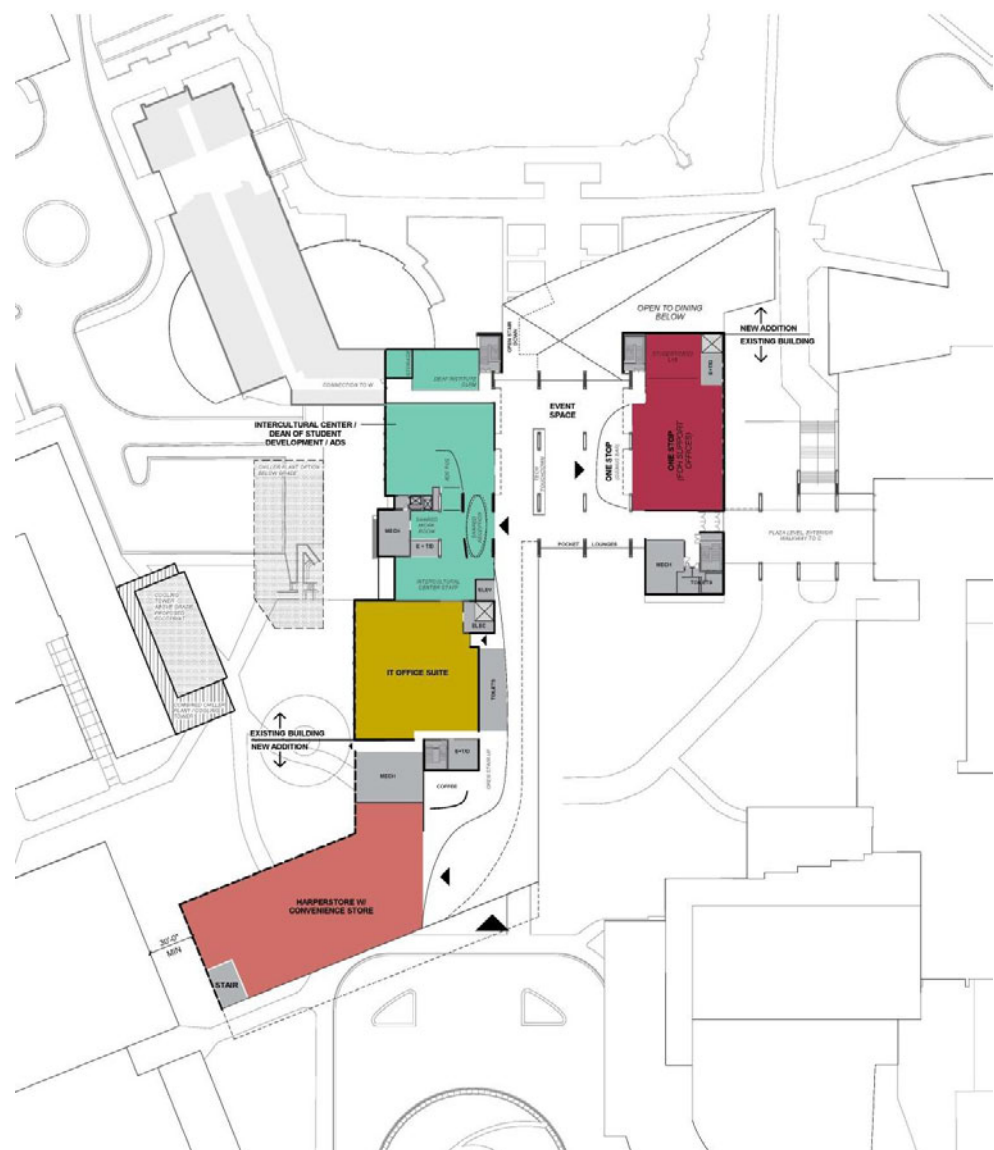


# SD #2 – Revised Planning Option 1

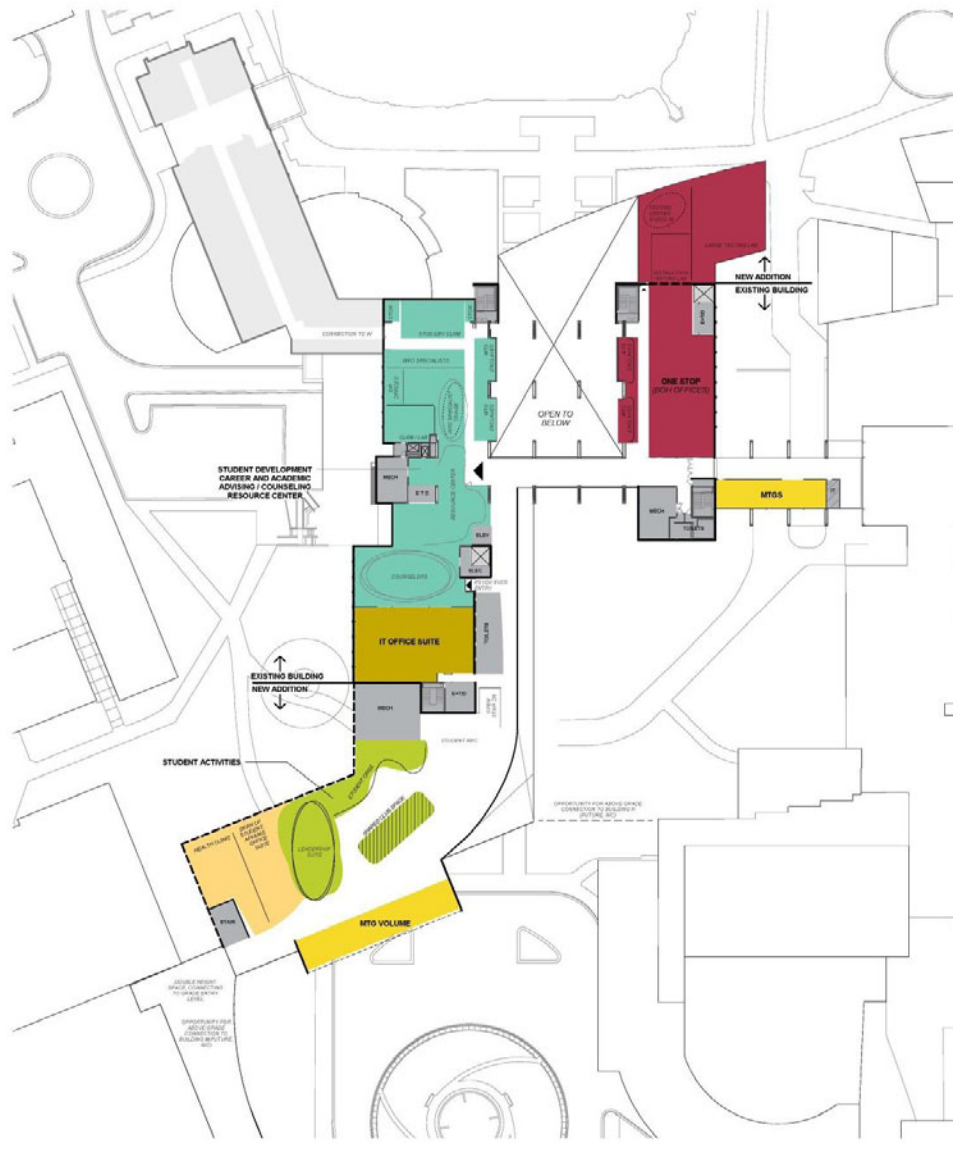
1



2

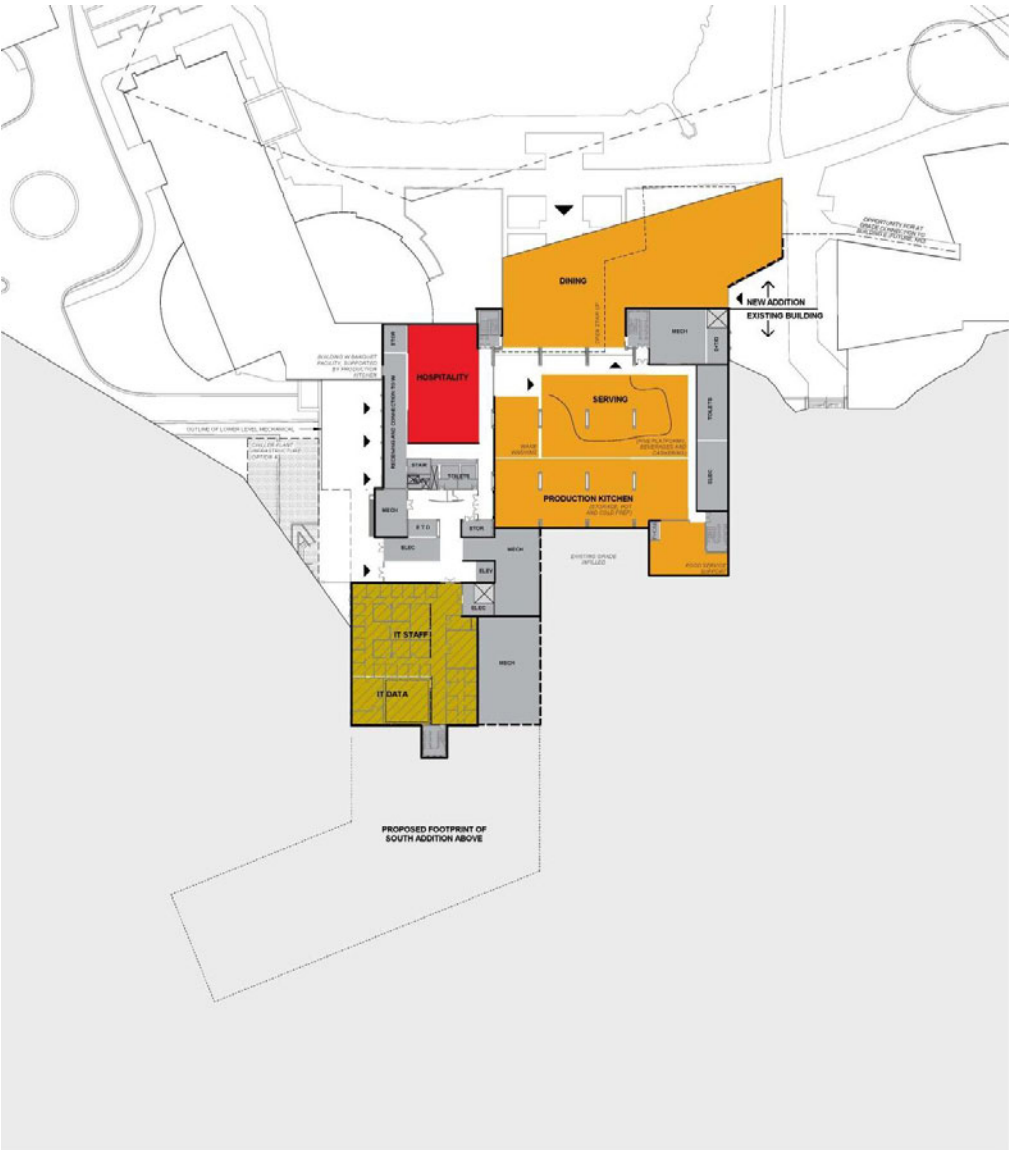


3



# SD #2 – Revised Planning Option 2

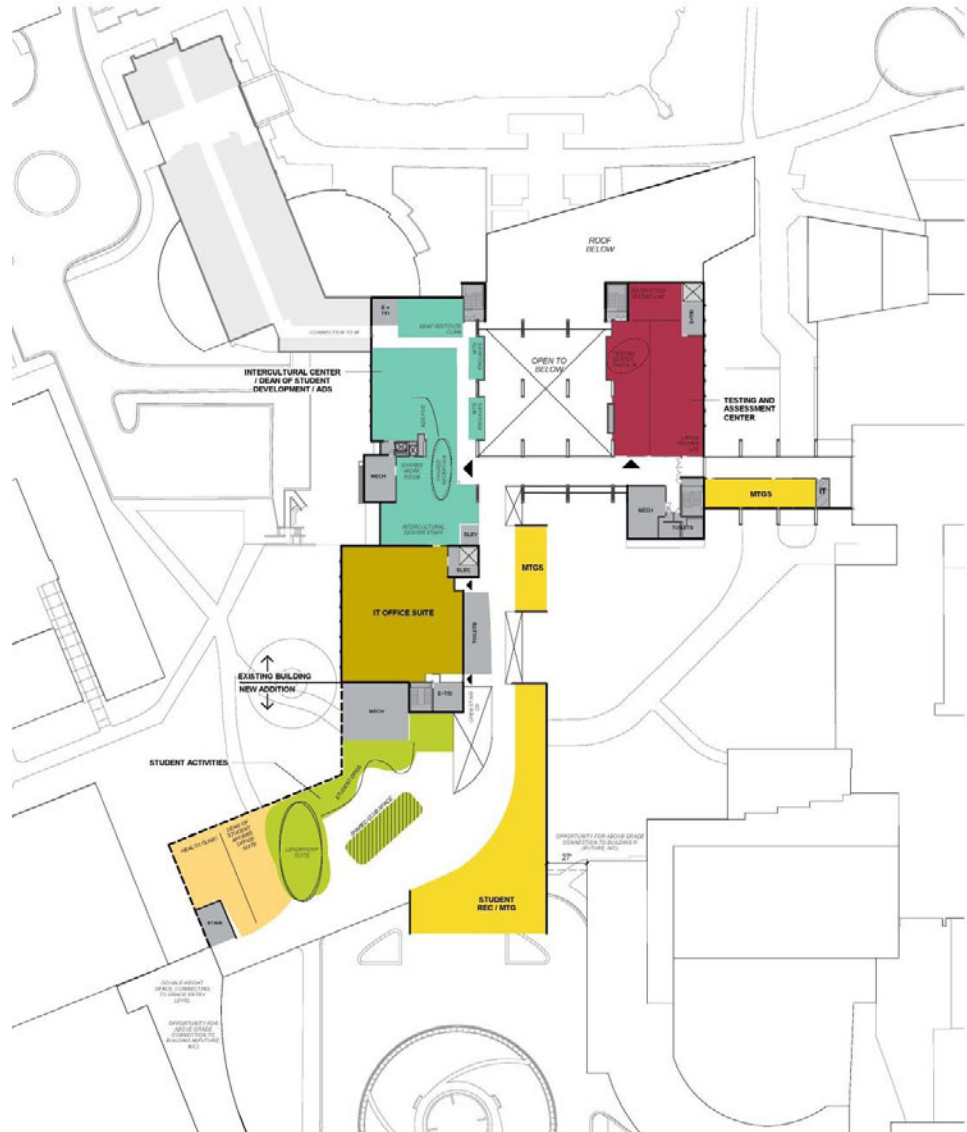
1



2



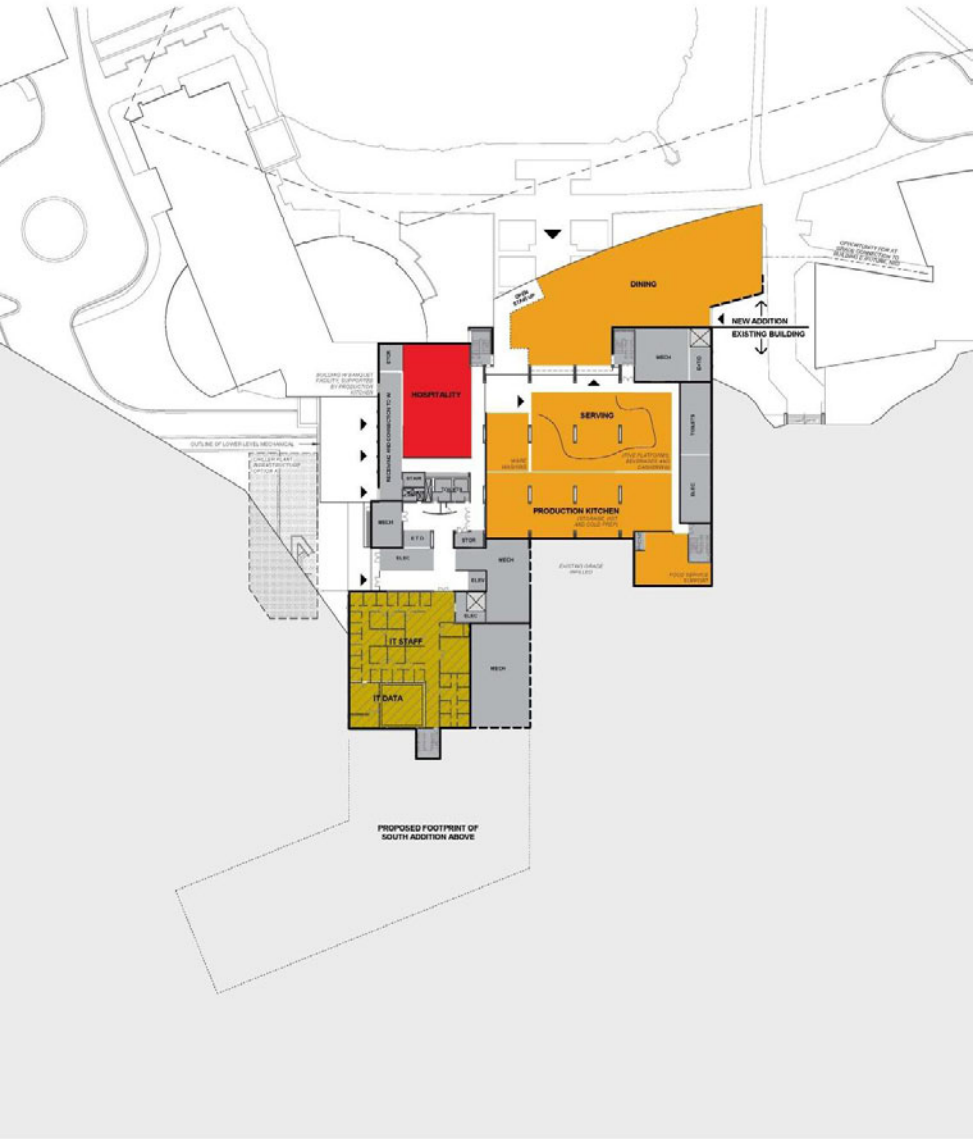
3



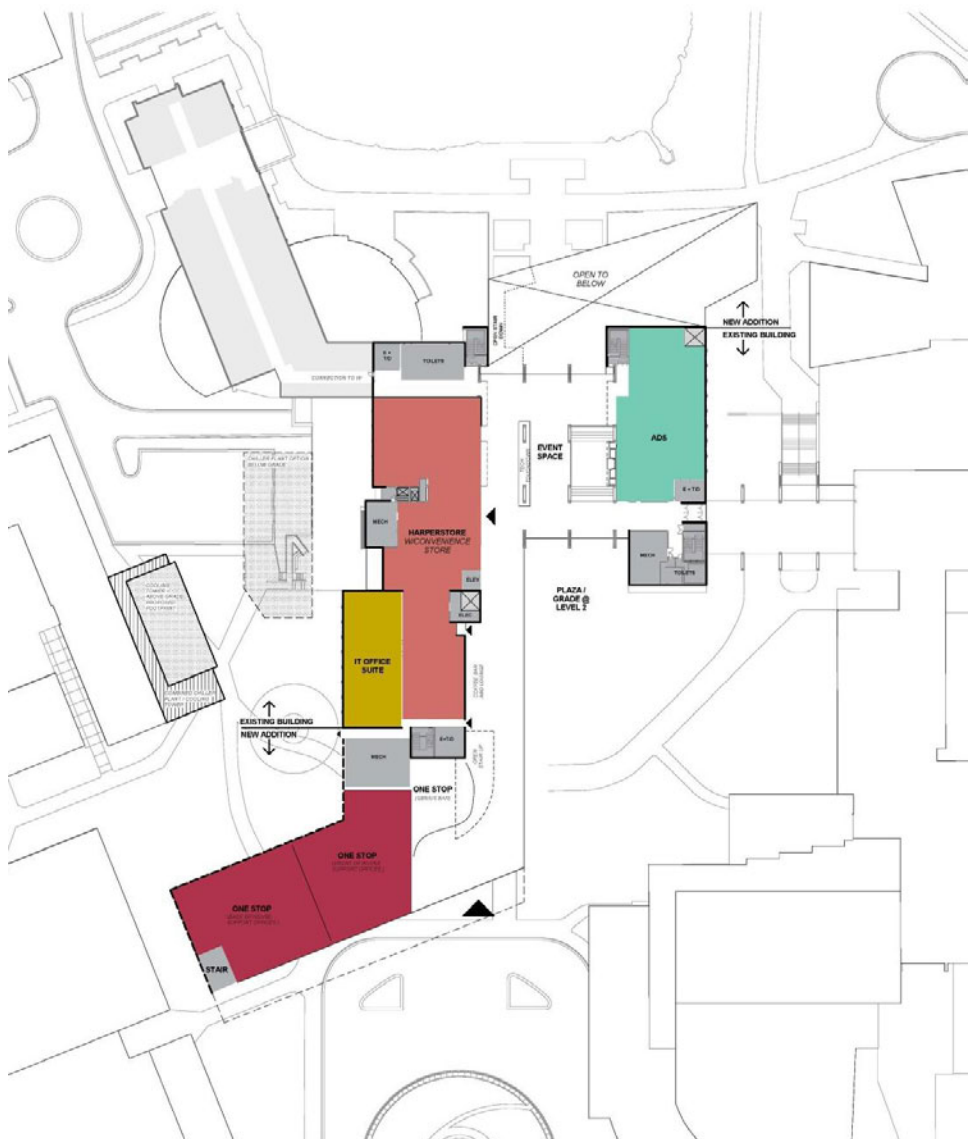


# SD #2 – Revised Planning Option 3

1



2



3





