



Institutional Dashboards

Phase 1

Institutional Dashboards
Committee of the Whole
December 2015

IEMs

Student Success Measures

- Developmental Education Success
- Success in Gateway Courses
- Advancement Rate
- Persistence Rates
- Completion Rates

Institutional Success Measures

- Diversity
- High School Penetration Rate
- Facilities (NEW)
- Student Costs
- Information Technology (NEW)

DASHBOARDS

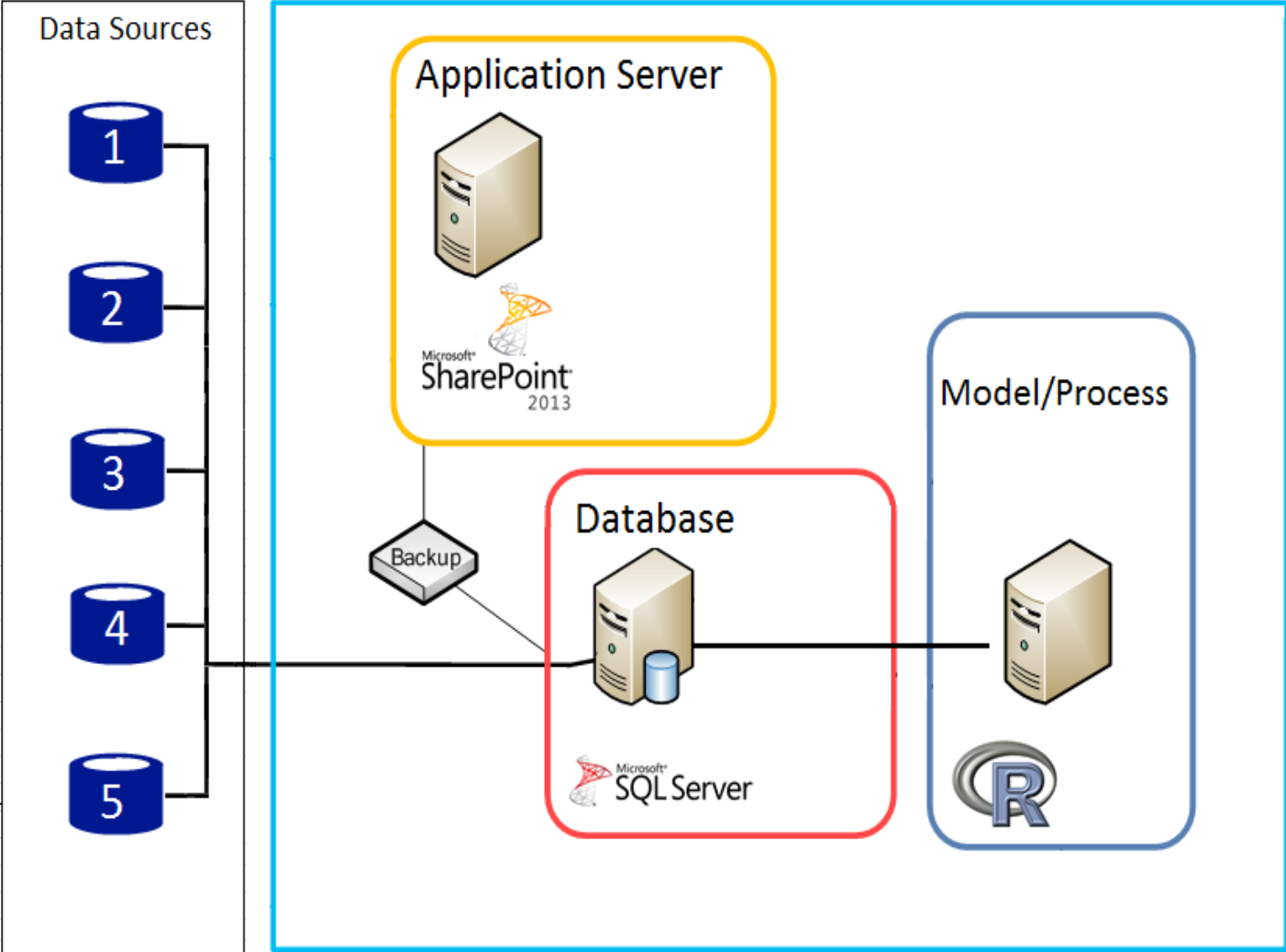
When Completed

- **Institutional**
 - Student Success
 - Institutional Success
 - Enrollment/Access
- **Operational**
- **Student**

Phase 1

- **Institutional**
 - Student Success
 - 5 measures/indicators/peer
 - Institutional Success
 - 3 measures/indicators
- **Student**

Student Information - Production



(87 tables)

MAJOR DATA SOURCES

Banner

Student Information System

E-Business suite

Human Resource and Financial Management solution

ODS

Operational data warehouse for Banner only

Starfish

Early Alert software solution

AIM

Access and disabilities students and services database

SARS

Scheduling system for advisors and students

AccuSQL

Tutoring, athletics, and kinesiology student database

Live Demo

<https://prodedmsp.harpercollege.edu/Institutional/>

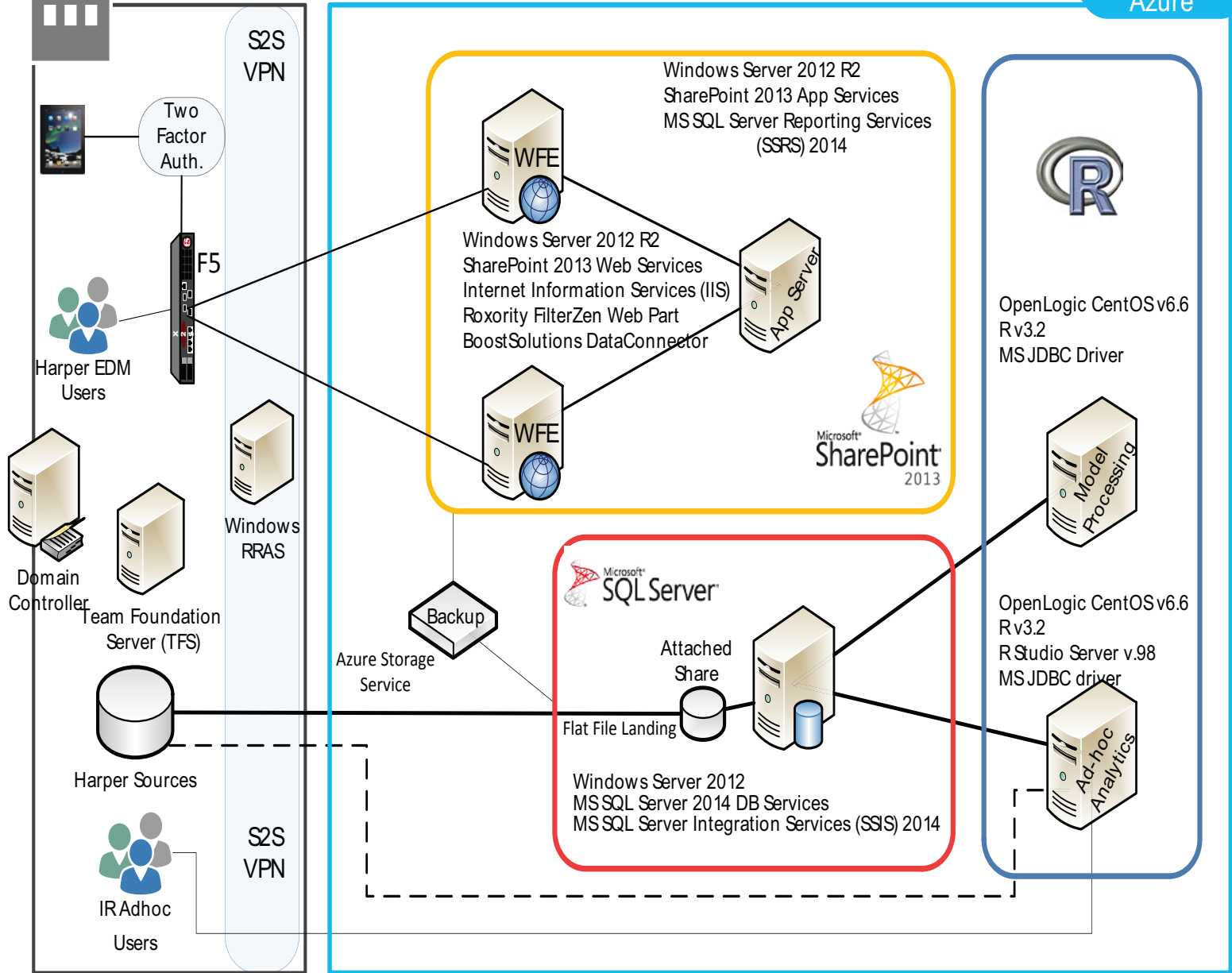
Questions



Production / VNet A



On Premise



S2S VPN

Two Factor Auth.

F5

Harper EDM Users

Windows RRAS

Domain Controller

Team Foundation Server (TFS)

Harper Sources

S2S VPN

IR Adhoc Users

Windows Server 2012 R2
SharePoint 2013 App Services
MS SQL Server Reporting Services (SSRS) 2014

Windows Server 2012 R2
SharePoint 2013 Web Services
Internet Information Services (IIS)
Roxority FilterZen Web Part
BoostSolutions DataConnector

Microsoft
SharePoint
2013

Backup

Azure Storage Service

Microsoft
SQL Server

Attached Share

Flat File Landing

Windows Server 2012
MS SQL Server 2014 DB Services
MS SQL Server Integration Services (SSIS) 2014



OpenLogic CentOS v6.6
Rv3.2
MS JDBC Driver



OpenLogic CentOS v6.6
Rv3.2
R Studio Server v.98
MS JDBC driver



SOFTWARE REQUIREMENTS

- Microsoft SharePoint 2013
- Microsoft SQL Server Enterprise
- Microsoft SQL Server Integration Server
- Roxority FilterZen for SharePoint
- Microsoft PowerView
- Microsoft SQL Server Reporting Service
- *R*: Version 3.0.0 or above with the following packages
 - RODBC (connect R and SQL server)
 - GGLOT2 (plots for data visualization)
 - MAPTOOLS (heat maps for data visualization)
 - SURVIVAL (survival analysis)
 - GEE (generalized estimation equation)
 - NLME/NLME4 (Linear mixed-effects model and generalized linear-mixed effects model)
- TFS

HISTORICAL DATA

All historical data beginning with the summer 2009 session are included in the initial implementation.

DATA UPDATE SCHEDULE

Hourly

Student
Student Address
Student Email
Student
Identification
Student Other
Name

Weekly

Student Program
Attendance Event
Student Program Enrollment

Bi-Semester (midpoint/final)

Course
Course Offering
Student Assessment
Student Assessment Score
Result
Student Characteristics
Student Cohort
Student Diploma
Student Diploma Academic
Honor
Student Diploma
Graduation Plan
Student Disability
Student Graduation Plan
Student Report Card
Student School Enrollment