

A Focus on Innovation at Harper College



Dr. Maria Coons, Vice President Strategic Alliances and Innovation
Dr. Susanne Brock, Senior Director Innovation and Development
Michael Cornstubble, CPE Instructor

Innovation
Accelerator



TOP 25 in the **NATION**

Innovation

Accelerator

A new business solution that:

- Minimizes risk
- Maximizes innovation for quicker response
- Fosters engagement and collaboration
- Accelerates development
- Pilots courses/programs
- Transitions strategically



TOP 25 in the **NATION**

Alignment with Strategic Plan and Operations Plan

Strategic Goal #6:
Implement innovative
and inclusive teaching
and learning

Operational Goal: Implement programs, initiatives, and practices that foster and strengthen innovative and inclusive education and training

- Establish an Innovation Accelerator that will streamline new programming at the College, including:
 - Pursue at least 4 grants that bring innovative programming to the College
 - Operationalize at least one new program as a result of an awarded grant



TOP 25 in the **NATION**

Innovation

Accelerator

Organization

- Steering Committee
- Working Groups
- Business and Industry Leadership Teams (BILT)

Funding

- Surplus for New Programs
- Grants



TOP 25 in the **NATION**

What the Innovation Accelerator Does

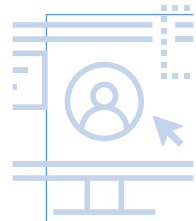


1. Creates market-aligned curriculum that keeps pace with the market
2. Accelerates speed-to-market and responsiveness to business and industry
3. Focuses on increasing enrollment and generating revenue



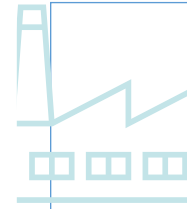
TOP 25 in the **NATION**

Regional Economies Positioned for Growth



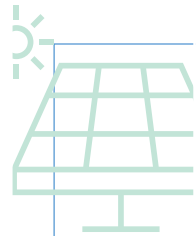
Readiness Economy

- Biotechnology, cybersecurity, infrastructure, and public health



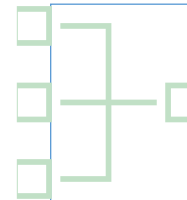
Logistics Economy

- Industrial big data analytics, internet of things (IoT) technologies, and supply chain management



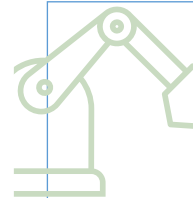
Green Economy

- Renewable energy, sustainability, green building construction



Remote Economy

- Supporting e-commerce, cloud computing, and network systems



Automated Economy

- AI, robotics, automation, software and application development, and data science



TOP 25 in the **NATION**

FY23 Innovation Accelerator Goals

- Focus on rapid development of technology courses and programs
- Conduct labor market research to identify employer needs
- Conduct Knowledge, Skills, and Abilities (KSAs) validation and prioritization using Business and Industry Leadership Team (BILT) model
- Design in-demand programs that lead to increased enrollment and revenue generation
- Pilot courses, evaluate, and transition



TOP 25 in the **NATION**

Innovation
Accelerator

Emerging Technologies

Artificial Intelligence

Cybersecurity

Cloud Infrastructure

Courses and programs available now!

The Harper College logo consists of a stylized grid icon followed by the text "Harper College" in a serif font.

Strengthening Community Colleges (SCC3) Grant



\$1.6 million/4 years

Creating comprehensive, accelerated career pathways in:

Cybersecurity

Artificial Intelligence

Cloud Computing Infrastructure

Focus on engaging underrepresented populations in emerging technology fields

Multiple on- and off-ramps to meet students where they are, including technical bridge programs

Using BILT model for curricula and program development

**ASPEN
PRIZE**

FOR COMMUNITY
COLLEGE EXCELLENCE

aspen institute

SEMIFINALIST

2023

TOP 25 in the **NATION**

 Harper College

AI is Everywhere

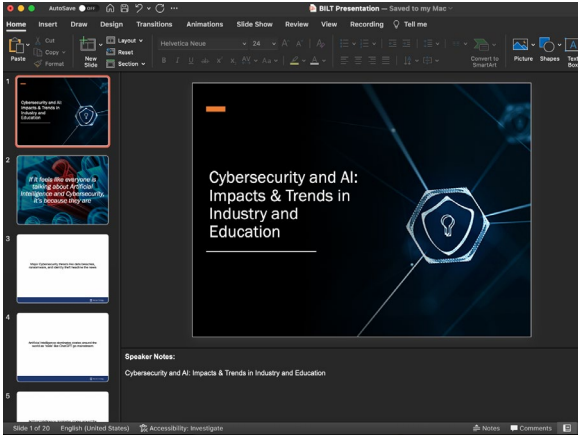
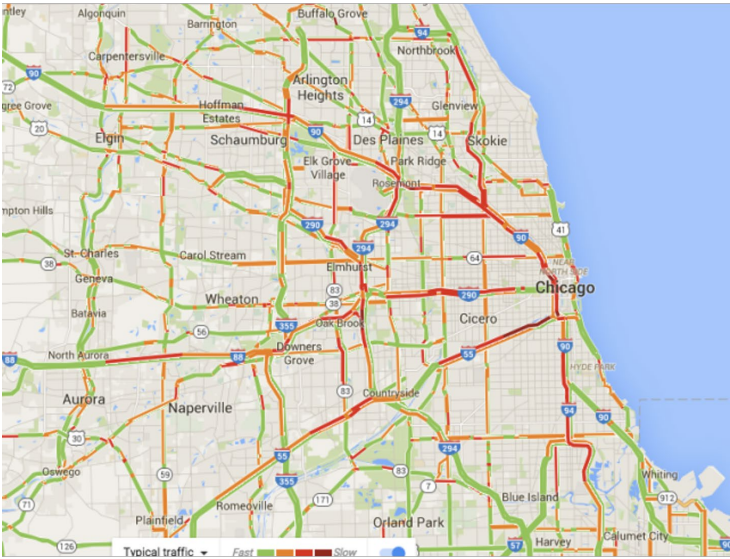


Please describe what artificial intelligence is

Artificial Intelligence (AI) refers to the ability of machines to perform tasks that would normally require human intelligence to complete. AI involves the development of computer programs and algorithms that can "learn" from data and make decisions based on that learning, without being explicitly programmed to do so.

There are different types of AI, including:

1. Supervised learning - this involves providing the AI system with labeled data, where the machine learns to recognize patterns and make predictions based on the data.
2. Unsupervised learning - this involves providing the AI system with unlabeled data, where the machine identifies patterns and relationships on its own.
3. Reinforcement learning - this involves providing the AI system with a reward system, where the machine learns to make decisions that maximize the reward.



ASPEN PRIZE
FOR COMMUNITY COLLEGE EXCELLENCE
aspen institute

SEMIFINALIST
2023

TOP 25 in the NATION

What is Artificial Intelligence?

Narrow AI

- Inferior to human intelligence.
- Also known as weak AI.
- Lacks artificial consciousness or cognitive abilities.
- IBM Watson, AlphaGo, and Google Assistant are some examples.
- Can't solve unfamiliar problems.

General AI

- Similar to human intelligence.
- Also known as strong AI or full AI.
- Has human-like consciousness and cognitive abilities.
- Yet to become a reality.
- Can solve unfamiliar problems.



TOP 25 in the **NATION**

What is Artificial Intelligence?



Predictive Analytics

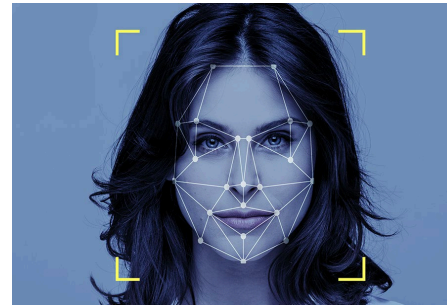


Image Recognition



Natural Language

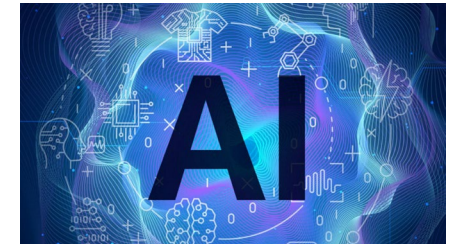
- Executing operations without explicit programming
- Lives, scales, and runs in the Cloud



TOP 25 in the **NATION**

Strategic and Evolving Focus on Skills Employers Need

- Deliver courses that teach relevant, and practical technical skills
- Engage with industry leading platforms and tools
- Leverage instructors and guest speakers with real-world experience
- Collaborate content with technology providers, and BILT
- Provide opportunities for meaningful career credentials
- Ensure students are ready for Day 1



TOP 25 in the **NATION**

Questions?



TOP 25 in the **NATION**