

Your Path for **SUCCESS**

For First Time in College, Credential-Seeking Students

**ASPEN
PRIZE**

FOR COMMUNITY
COLLEGE EXCELLENCE

◆ aspen institute

SEMIFINALIST

2023

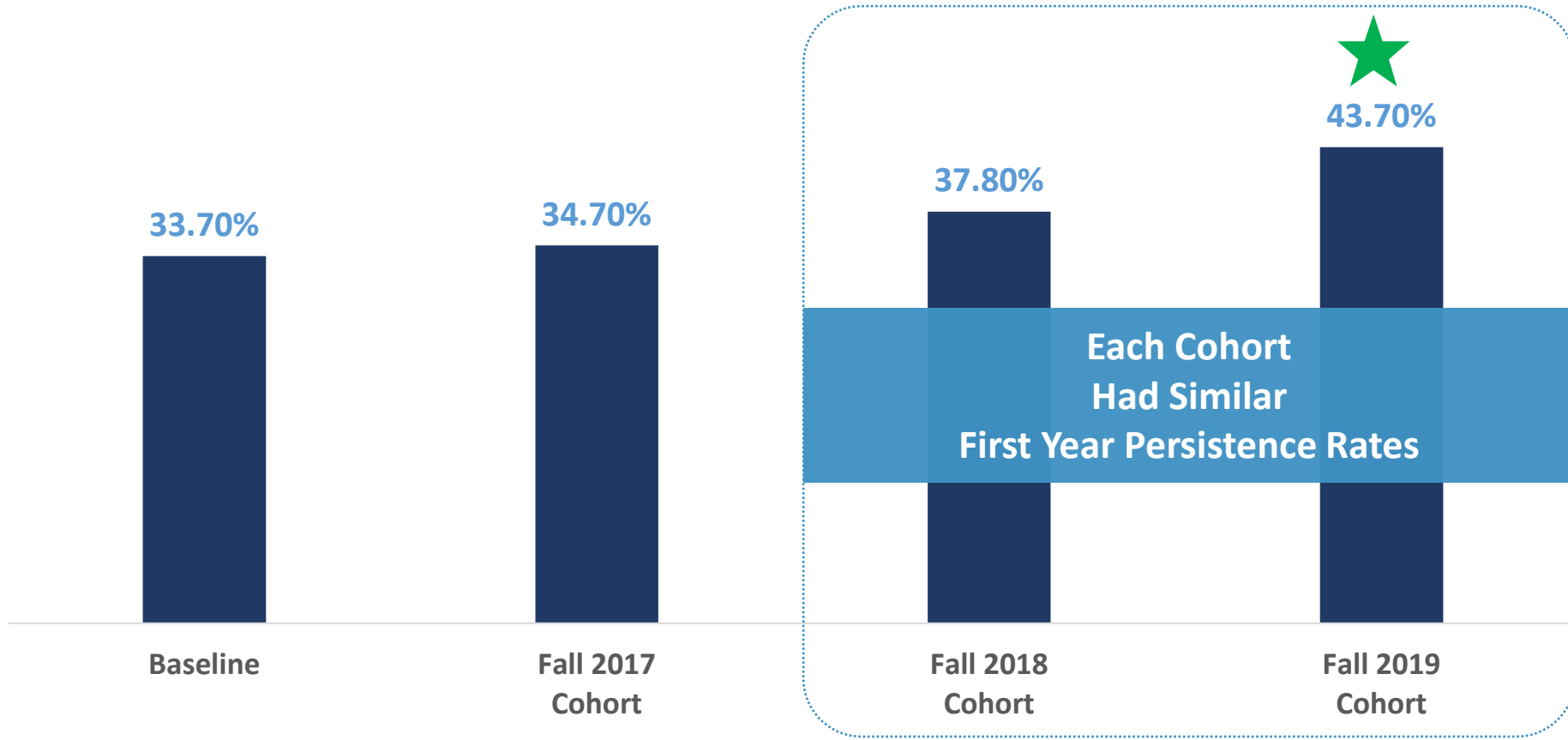
Dr. Megan Dallianis | Matt McLaughlin | August 16, 2023

TOP 25 in the **NATION**

 Harper College

Harper's Highest Graduation Rate

First Time in College, Credential-Seeking Students Who Began Fall 2019



TOP 25 in the **NATION**

What other clues exist to explain the higher graduation rate?

CCRC RESEARCH BRIEF

COMMUNITY COLLEGE RESEARCH CENTER | JULY 2019

Early Momentum Metrics Leading Indicators for Community College Improvement

By Clive R. Belfield, Davis Jenkins, and John Fink

As community colleges across the country improve student success, they need timely and actionable data to know if the actions they are making in a given year or term will likely improve student success. In this brief, we examine how well nine measures of student success, or EMMs, are as leading indicators of the effectiveness of these actions.

Based on analysis of student data from all community colleges in 15 states, we find that EMMs do predict longer time to completion. We also find that a key factor in low completion rates is that many students do not complete their first year. College outcomes would be improved if more students met EMMs. Our findings indicate the need for reforms to community college organization and practice to help students gain early momentum on their way to completion.

First-Year Indicators of Long-Term Student Success

Throughout the nation, two-year and four-year colleges face a “needle” on collegewide measures of success (e.g., completion rates). The entire institution may be required to ensure that its programs, services, and policies are designed and aligned to promote student success. Hundreds of colleges across the country are adopting whole-college reforms commonly referred to as “guided pathways” (Bailey, Jaggars, & Jenkins, 2015). As part of these reforms, colleges are mapping out and options for programs of study so that they are aligned with desired employment and transfer outcomes, redesigning the onboarding process to help new students explore options and interests and develop an academic completion plan, and revamping advising to better support students in making timely progress toward completion of a credential. Faculty are also working together across disciplines to ensure that curricula and teaching prepare students to succeed in employment and transfer in their field of study.

Because they involve a redesign of college practices at scale, guided pathways reforms take several years to implement (Jenkins, Lahr, Fink, & Ganga, 2018, pp. 2–3). Given that whole-college

“[EMM’s] are early, leading indicators that strongly predict student completion.”

ASPEN PRIZE

FOR COMMUNITY COLLEGE EXCELLENCE

aspen institute

SEMIFINALIST

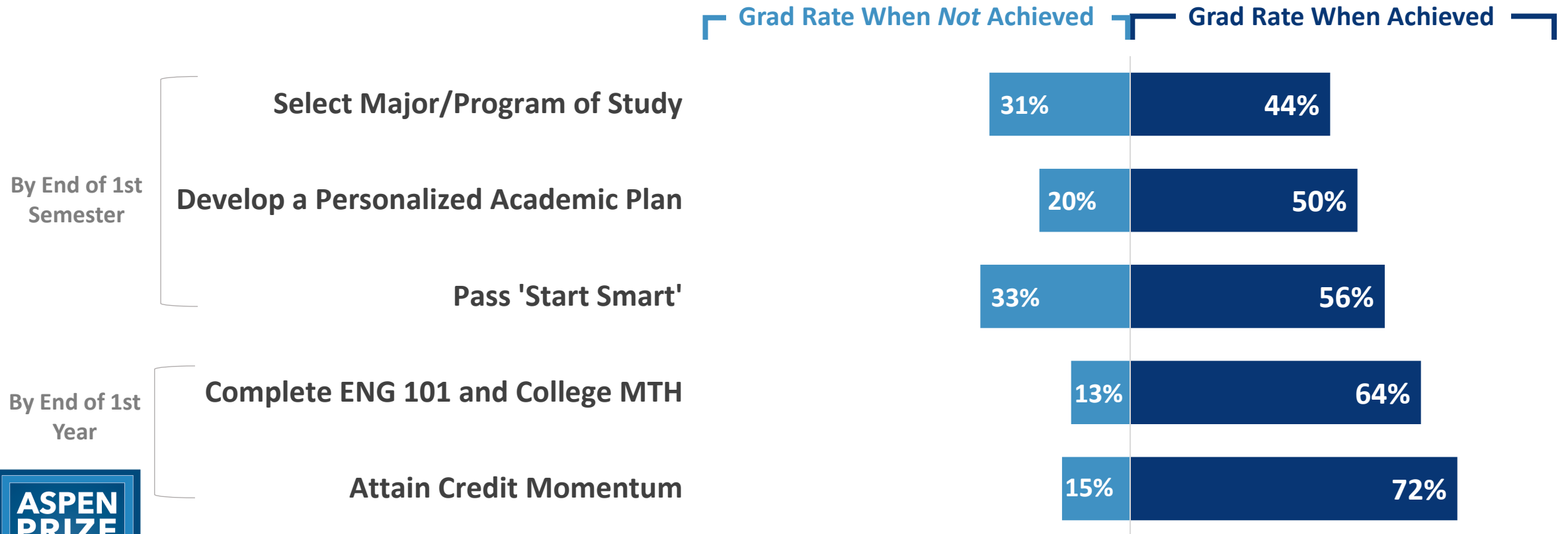
2023

TOP 25 in the NATION

Harper College

Higher Graduation Rates When Achieving any of the Five Momentum Metrics

First Time in College, Credential-Seeking Students Who Began Fall 2019

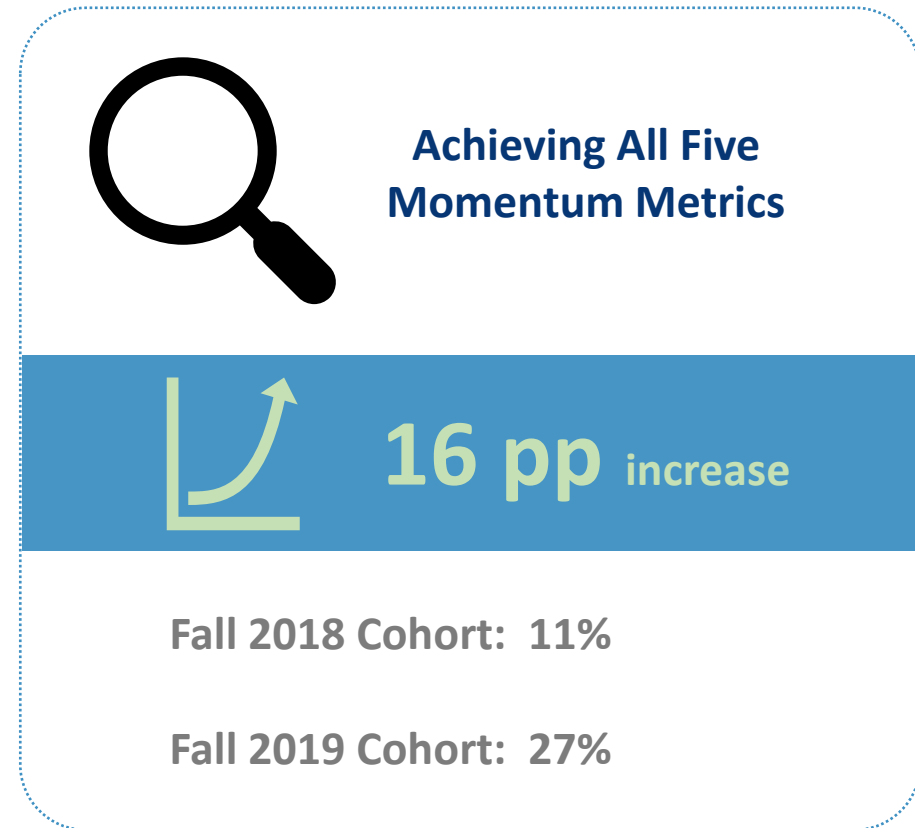
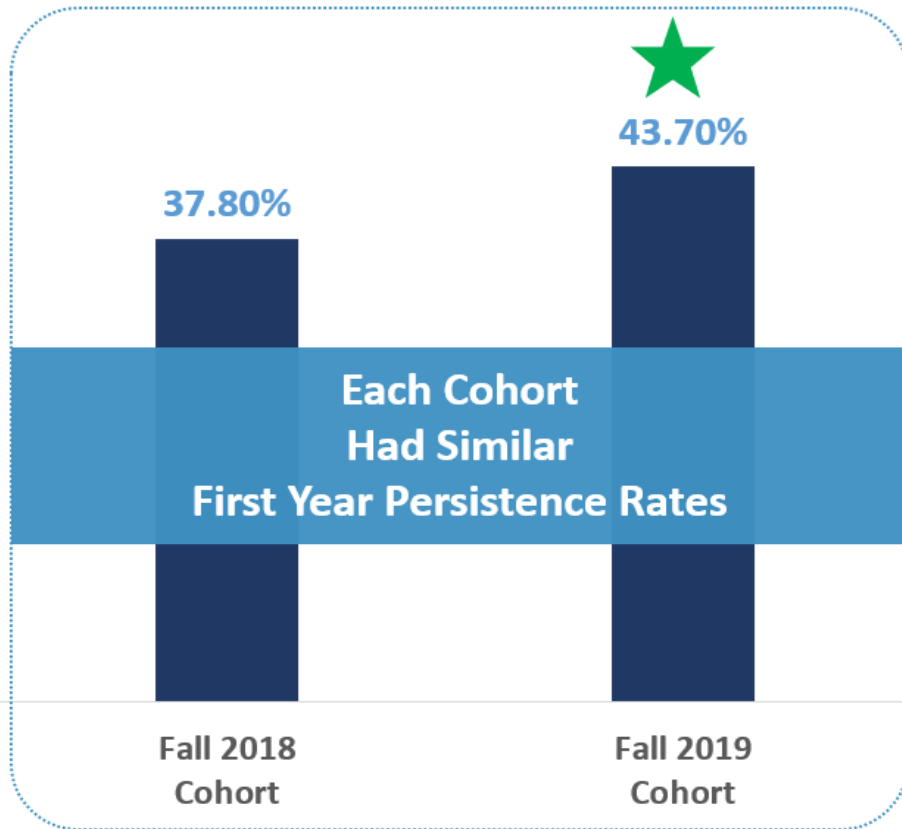


SEMIFINALIST

2023

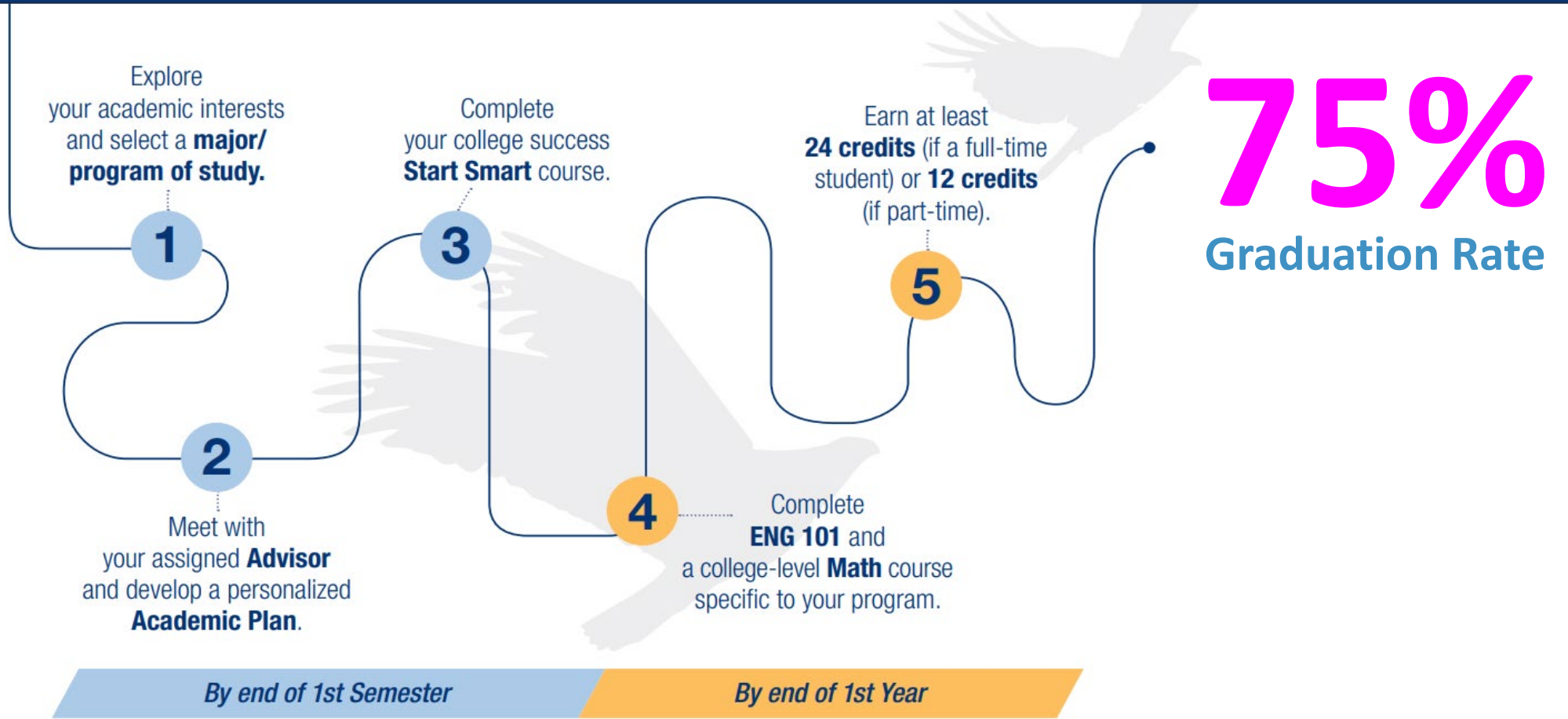
TOP 25 in the **NATION**

Momentum Metric Achievement Explains the Increase in the Fall 2019 Graduation Rates



TOP 25 in the NATION

Students who follow the **Path for Success** graduate at a rate **3X HIGHER** than students who do not



TOP 25 in the **NATION**



Momentum Metrics to Achieve by the End of the First Semester

1

Select a major/ program of study

- Supporting deciding students

2

Develop a personalized Academic Plan

- Critical persistence predicative variable
- Advising 'call to action'

3

Complete a college success Start Smart course

- Start Smart Policy
- Compliance and successful completion



TOP 25 in the **NATION**

Momentum Metrics to Achieve by the End of the First Year

4

Complete ENG 101 and a College Level Math Course

- Institutional Effectiveness Measure
- Developmental Education Reform Act
- Compliance rates

5

Earn at least 24 credits (if FT) *or* 12 credits (if PT)

- Institutional Effectiveness Measure
- Summer enrollment nudges
- 8-week format programs
- Balance among in-person and online course modalities



TOP 25 in the **NATION**

Socialization

Your Path for **SUCCESS**

Your Path for SUCCESS
For First Time in College, Degree-Seeking Students

Students who follow the path to success graduate at a rate **3X HIGHER** than students who do not.

1 Explore your academic interests and select a **major/program of study**.

2 Meet with your assigned **Advisor** and develop a personalized **Academic Plan**.

3 Complete your college success **Start Smart** course.

4 Complete **ENG 101** and a college-level **Math** course specific to your program.

5 Earn at least **24 credits** (if a full-time student) or **12 credits** (if part-time).

SCAN to get on the path.

By end of 1st Semester | By end of 1st Year

Harper College
1200 West Algonquin Road
Palatine, Illinois 60067-7398

Nonprofit Organization
U.S. Postage
Paid
Palatine, IL
Permit No. 2862

Student Name
123 Main St.
Palatine, IL 60067

Harper College is committed to the policy that all persons shall have equal access to its programs, facilities, and employment without regard to race, color, creed, religion, national origin, sex, age, marital status, disability, public assistance status, veteran status or sexual orientation. 3/15/02 TC 5/23

SEARCH
EXPLORE YOUR JOURNEY



ONBOARD
PREPARE TO TAKE FLIGHT



ADVANCE
FOLLOW YOUR FLIGHT PLAN



REALIZE
ENSURE A SUCCESSFUL LANDING



ASPEN PRIZE
FOR COMMUNITY COLLEGE EXCELLENCE
aspen institute

SEMIFINALIST

2023

TOP 25 in the **NATION**

Harper College

Your Path for
SUCCESS

Q & A

Focus on raising
Momentum Metrics'
rates of achievement




Higher
Graduation Rates



TOP 25 in the **NATION**