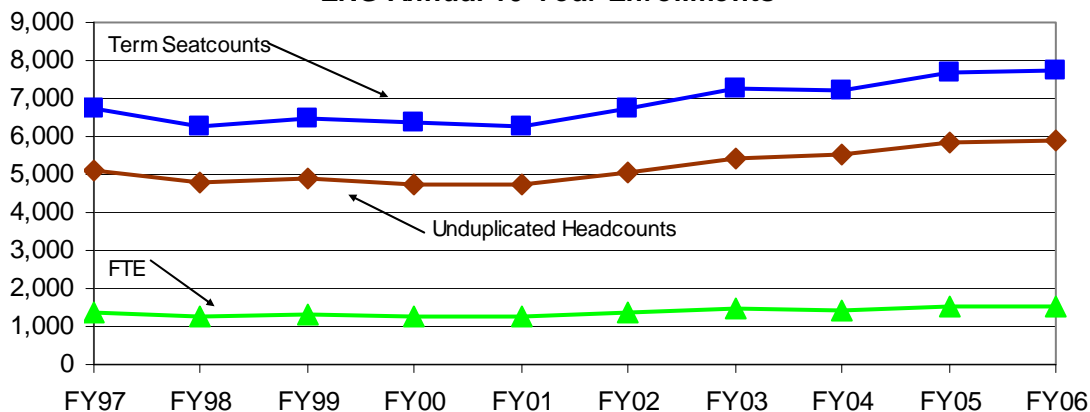


**English 10-Year Student Counts  
For  
Program Review 2006-2007**

*Prepared by the Office of Research  
Teaming to Serve Research Needs of the College  
August 16, 2006*

### ENG Annual 10-Year Enrollments



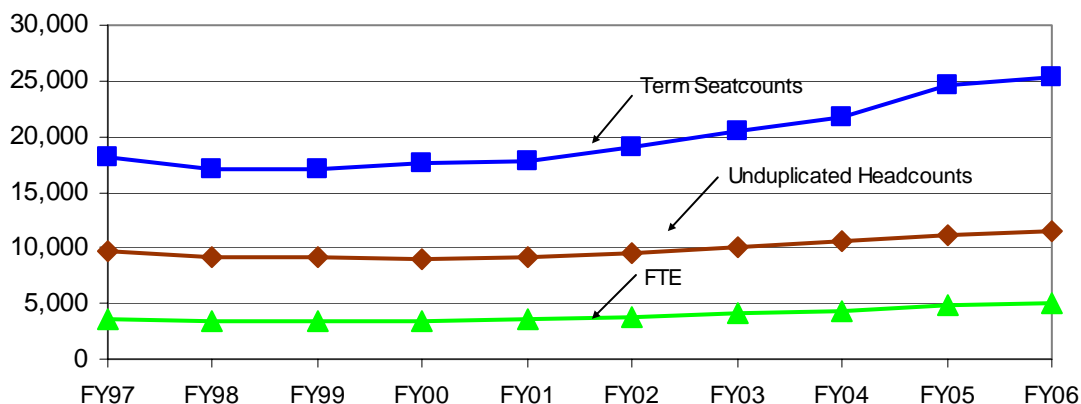
#### ENG

	FY97	FY98	FY99	FY00	FY01	FY02	FY03	FY04	FY05	FY06
Unduplicated Heads	5,080	4,789	4,878	4,731	4,719	5,038	5,414	5,528	5,825	5,888
Term Seatcount	6,760	6,286	6,476	6,355	6,264	6,728	7,269	7,208	7,686	7,760
FTE	1352.2	1257.2	1295.2	1271.0	1252.8	1345.6	1453.8	1441.6	1537.2	1552.0

#### Enrollment Growth (% change)

ENG	1 year	5 year	10 year
Unduplicated Headcount	1.1%	16.9%	15.9%
Term Seatcount	1.0%	15.3%	14.8%
FTE	1.0%	15.3%	14.8%

### LIB ARTS Annual 10-Year Enrollments



#### DIVISION TOTAL

	FY97	FY98	FY99	FY00	FY01	FY02	FY03	FY04	FY05	FY06
Unduplicated Heads	9,654	9,136	9,110	8,973	9,143	9,520	10,145	10,548	11,075	11,482
Term Seatcount	18,087	16,990	17,126	17,519	17,803	19,013	20,486	21,750	24,591	25,393
FTE	3590.1	3402.7	3406.3	3454.5	3528.6	3763.7	4059.5	4313.1	4882.8	5087.2

\*Based on final end of semester counts obtained from the Registrar's Office.