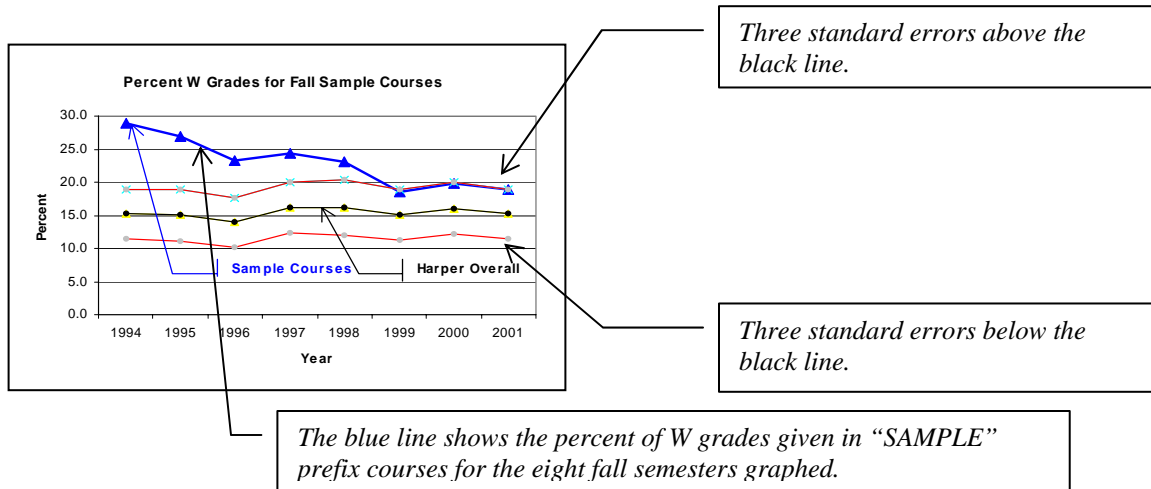


Semester Level Grade Distributions  
with Graphs for  
BCE Prefix Courses

*Prepared by the Office of Research  
Teaming to Serve the Research Needs of the College  
November 21, 2007*

The page that follows provides grade distributions for the past ten fall and spring semesters<sup>1</sup>, which contains four graphs showing the percent F and W grades awarded students taking courses with the specified prefix. Each grade graph has a black line representing the overall Harper percent of students (excluding AED courses) receiving that grade. Each grade graph also has two red lines representing three course prefix standard errors above and below the black line. The percent line for the specified prefix is blue. An annotated sample graph is provided below.



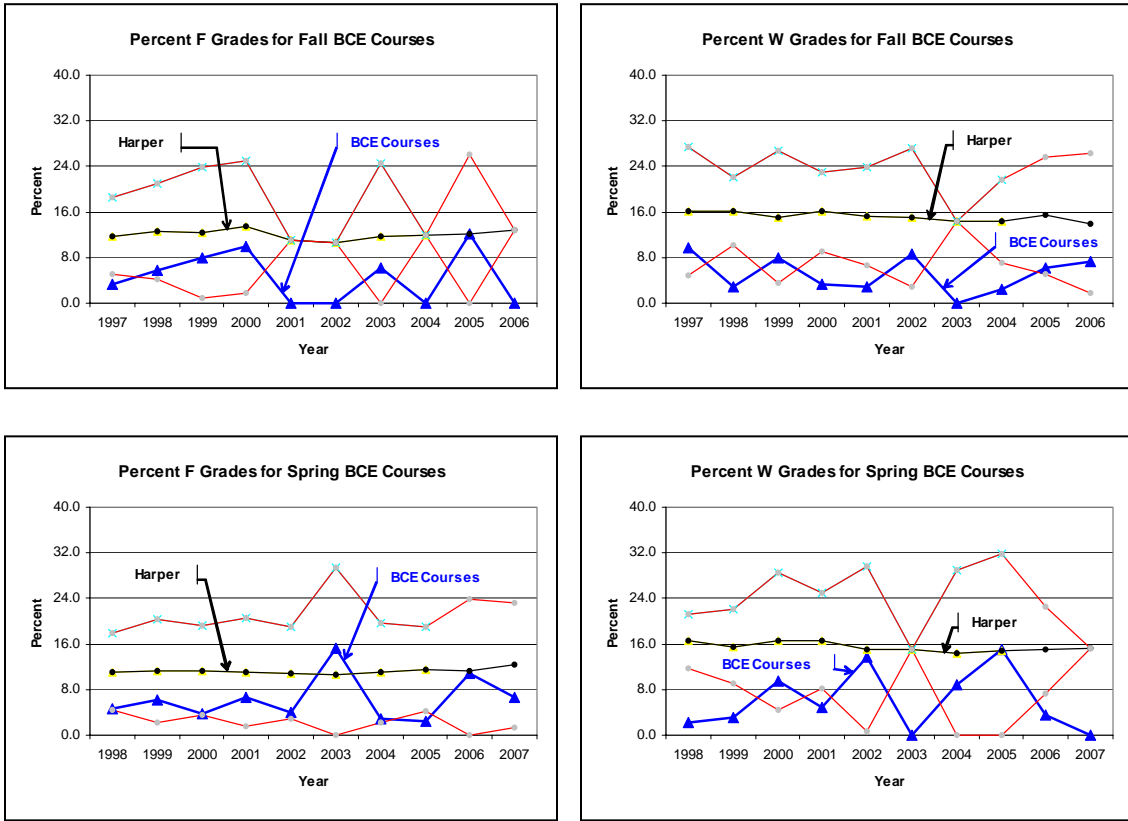
Generally, the blue line should stay between the two red lines with some points above the black line and some points below the black line. Blue points that are above the top red line represent percents that are significantly above the overall Harper percent ( $p < .01$ ). Similarly, blue points that are below the bottom red line represent percents that are significantly below the overall Harper percent ( $p < .01$ ).

If the graphs on the following pages show several "blue" points above the top red line or below the bottom red line, further investigation may be warranted. In the sample graph, most of the blue points are above the top red line. This indicates an excessive number of W's were issued for courses with the "SAMPLE" prefix. When all the blue points are below the black line the percent is consistently on the low side; similarly, when all the blue points are above the black line the percent is consistently on the high side.

The last page includes tables giving the total number of all grades given for each year, the percent of each grade type (%A, %B, %C, %D, %F, %W) graphed and its standard error (SE), and another grade labeled "O." O grades are other types of grades (audit, transfer credit, pass, incomplete, and so forth). Typically there are very few O grades.

<sup>1</sup> There were no BCE courses offered in the past ten summer semesters.

## Grade Distributions for BCE Prefix Courses by Semester



**Total N of BCE Students and Percent Earning Each Grade with Standard Error (SE)**

Fall	N	%A	SE	%B	SE	%C	SE	%D	SE	%F	SE	%W	SE	%O	SE	%P	SE
1997	62	43.5	6.3	32.3	5.9	11.3	4.0	0.0	0.0	3.2	2.2	9.7	3.8	0.0	0.0	0.0	0.0
1998	69	44.9	6.0	33.3	5.7	13.0	4.1	0.0	0.0	5.8	2.8	2.9	2.0	0.0	0.0	0.0	0.0
1999	50	44.0	7.0	26.0	6.2	14.0	4.9	0.0	0.0	8.0	3.8	8.0	3.8	0.0	0.0	0.0	0.0
2000	60	70.0	5.9	11.7	4.1	3.3	2.3	1.7	1.7	10.0	3.9	3.3	2.3	0.0	0.0	0.0	0.0
2001	34	52.9	8.6	17.6	6.5	20.6	6.9	2.9	2.9	0.0	0.0	2.9	2.9	2.9	2.9	0.0	0.0
2002	47	42.6	7.2	40.4	7.2	8.5	4.1	0.0	0.0	0.0	0.0	8.5	4.1	0.0	0.0	0.0	0.0
2003	32	71.9	7.9	15.6	6.4	6.3	4.3	0.0	0.0	6.3	4.3	0.0	0.0	0.0	0.0	0.0	0.0
2004	41	75.6	6.7	22.0	6.5	0.0	0.0	0.0	0.0	0.0	0.0	2.4	2.4	0.0	0.0	0.0	0.0
2005	49	51.0	7.1	18.4	5.5	10.2	4.3	2.0	2.0	12.2	4.7	6.1	3.4	0.0	0.0	0.0	0.0
2006	41	75.6	6.7	12.2	5.1	4.9	3.4	0.0	0.0	0.0	0.0	7.3	4.1	0.0	0.0	0.0	0.0

Spring	N	%A	SE	%B	SE	%C	SE	%D	SE	%F	SE	%W	SE	%O	SE	%P	SE
1998	87	47.1	5.4	28.7	4.9	14.9	3.8	1.1	1.1	4.6	2.2	2.3	1.6	1.1	1.1	0.0	0.0
1999	64	62.5	6.1	18.8	4.9	9.4	3.6	0.0	0.0	6.3	3.0	3.1	2.2	0.0	0.0	0.0	0.0
2000	53	32.1	6.4	47.2	6.9	7.5	3.6	0.0	0.0	3.8	2.6	9.4	4.0	0.0	0.0	0.0	0.0
2001	61	44.3	6.4	32.8	6.0	11.5	4.1	0.0	0.0	6.6	3.2	4.9	2.8	0.0	0.0	0.0	0.0
2002	51	49.0	7.0	25.5	6.1	2.0	1.9	3.9	2.7	3.9	2.7	13.7	4.8	2.0	1.9	0.0	0.0
2003	33	42.4	8.6	33.3	8.2	6.1	4.2	3.0	3.0	15.2	6.2	0.0	0.0	0.0	0.0	0.0	0.0
2004	34	58.8	8.4	26.5	7.6	2.9	2.9	0.0	0.0	2.9	2.9	8.8	4.9	0.0	0.0	0.0	0.0
2005	40	75.0	6.8	7.5	4.2	0.0	0.0	0.0	0.0	2.5	2.5	15.0	5.6	0.0	0.0	0.0	0.0
2006	55	58.2	6.7	14.5	4.8	12.7	4.5	0.0	0.0	10.9	4.2	3.6	2.5	0.0	0.0	0.0	0.0
2007	46	67.4	6.9	19.6	5.8	6.5	3.6	0.0	0.0	6.5	3.6	0.0	0.0	0.0	0.0	0.0	0.0

\*Harper overall percent plus/minus three standard errors form the red lines on the graphs. BCE percents within the red lines are not significantly different from the overall Harper percent at the .01 level of significance.