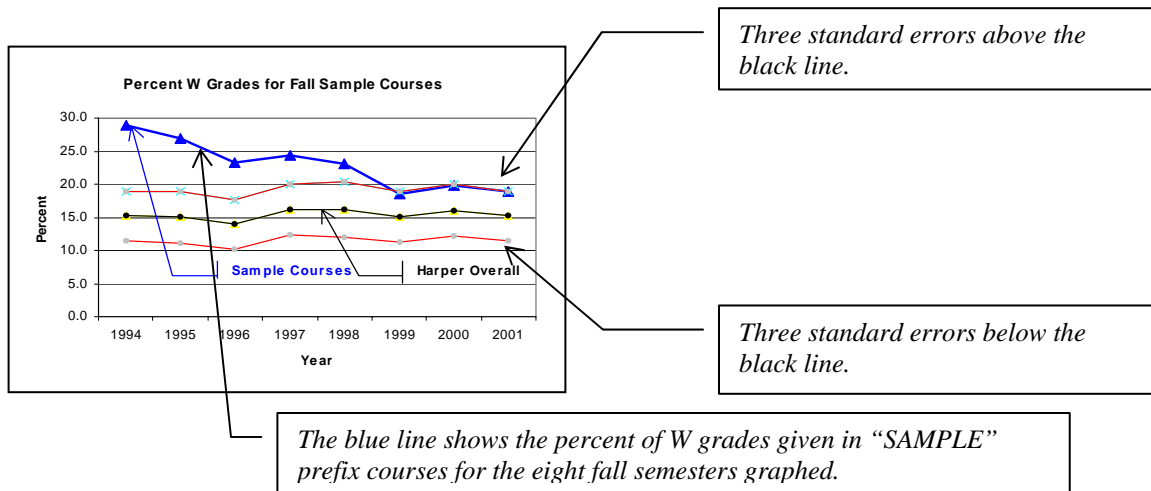


Semester Level Grade Distributions  
with Graphs for  
MOA Prefix Courses

*Prepared by the Office of Research  
Teaming to Serve the Research Needs of the College  
November 21, 2007*

The page that follows provides grade distributions for the past ten summer, fall, and spring semesters, which contains six graphs showing the percent F and W grades awarded students taking courses with the specified prefix. Each grade graph has a black line representing the overall Harper percent of students (excluding AED courses) receiving that grade. Each grade graph also has two red lines representing three course prefix standard errors above and below the black line. The percent line for the specified prefix is blue. An annotated sample graph is provided below.

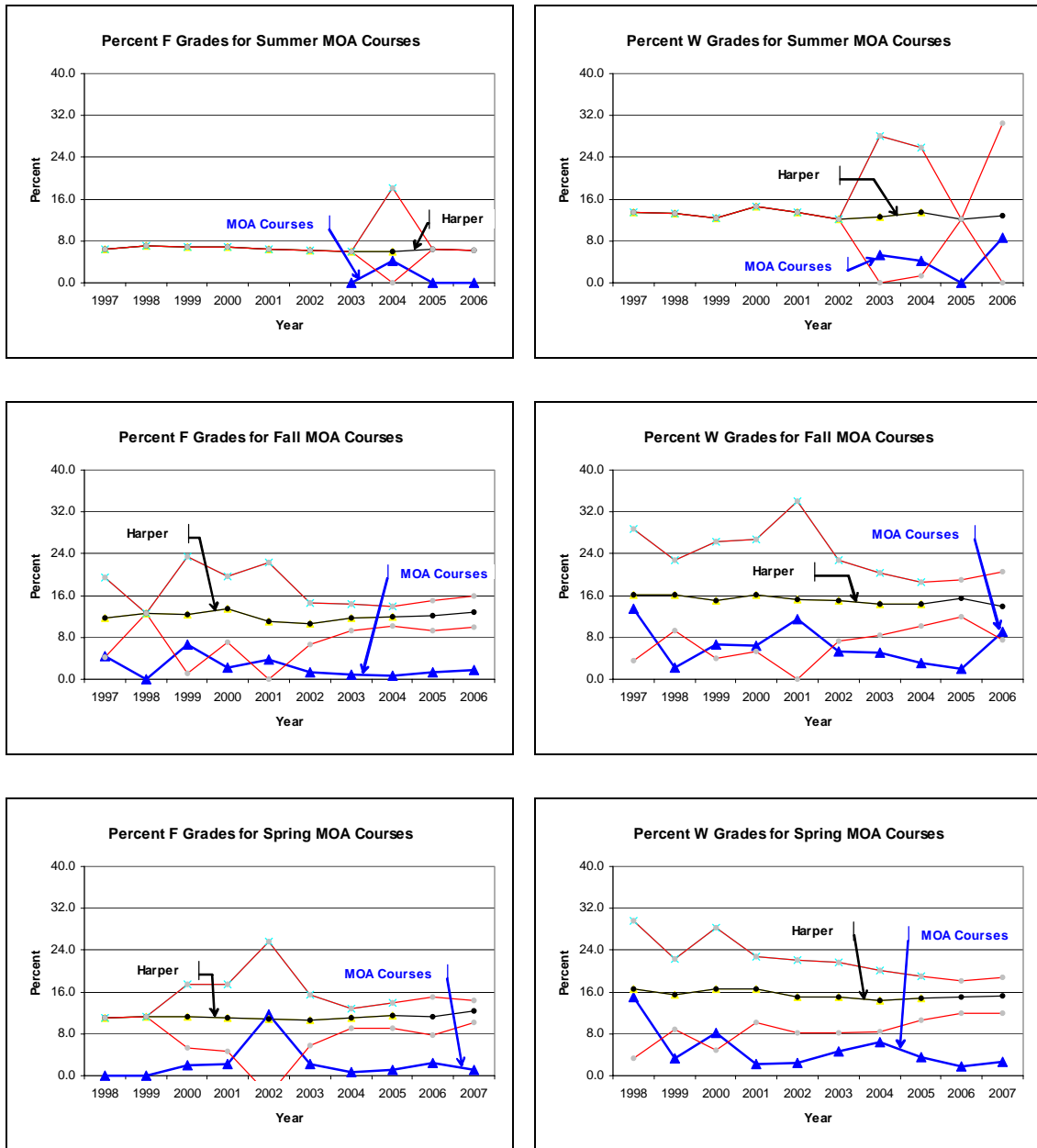


Generally, the blue line should stay between the two red lines with some points above the black line and some points below the black line. Blue points that are above the top red line represent percents that are significantly above the overall Harper percent ( $p < .01$ ). Similarly, blue points that are below the bottom red line represent percents that are significantly below the overall Harper percent ( $p < .01$ ).

If the graphs on the following pages show several “blue” points above the top red line or below the bottom red line, further investigation may be warranted. In the sample graph, most of the blue points are above the top red line. This indicates an excessive number of W’s were issued for courses with the “SAMPLE” prefix. When all the blue points are below the black line the percent is consistently on the low side; similarly, when all the blue points are above the black line the percent is consistently on the high side.

The last page includes tables giving the total number of all grades given for each year, the percent of each grade type (%A, %B, %C, %D, %F, %W) graphed and its standard error (SE), and another grade labeled “O.” O grades are other types of grades (audit, transfer credit, pass, incomplete, and so forth). Typically there are very few O grades.

## Grade Distributions for MOA Prefix Courses by Semester



Total N of MOA Students and Percent Earning Each Grade with Standard Error (SE)

Summer	N	%A	SE	%B	SE	%C	SE	%D	SE	%F	SE	%W	SE	%O	SE	%P	SE
1997	0																
1998	0																
1999	0																
2000	0																
2001	0																
2002	0																
2003	19	84.2	8.4	5.3	5.1	5.3	5.1	0.0	0.0	0.0	0.0	5.3	5.1	0.0	0.0	0.0	0.0
2004	24	75.0	8.8	4.2	4.1	8.3	5.6	0.0	0.0	4.2	4.1	4.2	4.1	4.2	4.1	0.0	0.0
2005	15	53.3	12.9	40.0	12.6	6.7	6.4	0.0	0.0	0.0	0.0	0.0	0.0	0.0	0.0	0.0	0.0
2006	23	60.9	10.2	30.4	9.6	0.0	0.0	0.0	0.0	0.0	0.0	8.7	5.9	0.0	0.0	0.0	0.0

Fall	N	%A	SE	%B	SE	%C	SE	%D	SE	%F	SE	%W	SE	%O	SE	%P	SE
1997	67	17.9	4.7	49.3	6.1	11.9	4.0	3.0	2.1	4.5	2.5	13.4	4.2	0.0	0.0	0.0	0.0
1998	44	34.1	7.1	52.3	7.5	6.8	3.8	4.5	3.1	0.0	0.0	2.3	2.2	0.0	0.0	0.0	0.0
1999	45	35.6	7.1	28.9	6.8	20.0	6.0	2.2	2.2	6.7	3.7	6.7	3.7	0.0	0.0	0.0	0.0
2000	47	63.8	7.0	23.4	6.2	2.1	2.1	2.1	2.1	2.1	2.1	6.4	3.6	0.0	0.0	0.0	0.0
2001	26	69.2	9.1	15.4	7.1	0.0	0.0	0.0	0.0	3.8	3.8	11.5	6.3	0.0	0.0	0.0	0.0
2002	75	66.7	5.4	21.3	4.7	4.0	2.3	0.0	0.0	1.3	1.3	5.3	2.6	1.3	1.3	0.0	0.0
2003	120	71.7	4.1	12.5	3.0	8.3	2.5	1.7	1.2	0.8	0.8	5.0	2.0	0.0	0.0	0.0	0.0
2004	160	64.4	3.8	27.5	3.5	4.4	1.6	0.0	0.0	0.6	0.6	3.1	1.4	0.0	0.0	0.0	0.0
2005	145	70.3	3.8	20.0	3.3	4.8	1.8	1.4	1.0	1.4	1.0	2.1	1.2	0.0	0.0	0.0	0.0
2006	177	52.0	3.8	26.0	3.3	10.2	2.3	1.1	0.8	1.7	1.0	9.0	2.2	0.0	0.0	0.0	0.0

Spring	N	%A	SE	%B	SE	%C	SE	%D	SE	%F	SE	%W	SE	%O	SE	%P	SE
1998	67	26.9	5.4	46.3	6.1	7.5	3.2	3.0	2.1	0.0	0.0	14.9	4.4	1.5	1.5	0.0	0.0
1999	62	41.9	6.3	17.7	4.9	17.7	4.9	0.0	0.0	0.0	0.0	3.2	2.2	0.0	0.0	0.0	0.0
2000	49	42.9	7.1	12.2	4.7	8.2	3.9	0.0	0.0	2.0	2.0	8.2	3.9	0.0	0.0	0.0	0.0
2001	47	63.8	7.0	2.1	2.1	0.0	0.0	0.0	0.0	2.1	2.1	2.1	2.1	0.0	0.0	0.0	0.0
2002	43	55.8	7.6	16.3	5.6	0.0	0.0	0.0	0.0	11.6	4.9	2.3	2.3	2.3	2.3	0.0	0.0
2003	87	57.5	5.3	10.3	3.3	9.2	3.1	1.1	1.1	2.3	1.6	4.6	2.2	0.0	0.0	0.0	0.0
2004	158	48.7	4.0	15.2	2.9	7.0	2.0	0.0	0.0	0.6	0.6	6.3	1.9	0.0	0.0	0.0	0.0
2005	174	48.3	3.8	8.6	2.1	5.2	1.7	0.6	0.6	1.1	0.8	3.4	1.4	0.0	0.0	0.0	0.0
2006	165	46.7	3.9	12.7	2.6	7.9	2.1	4.2	1.6	2.4	1.2	1.8	1.0	0.0	0.0	0.0	0.0
2007	193	49.2	3.6	13.5	2.5	7.8	1.9	0.5	0.5	1.0	0.7	2.6	1.1	0.0	0.0	0.0	0.0

\*Harper overall percent plus/minus three standard errors form the red lines on the graphs. MOA percents within the red lines are not significantly different from the overall Harper percent at the .01 level of significance.